



**NORTH AMERICAN
TRAIL RIDE CONFERENCE**

www.natrc.org



The Stirrup

Newsletter of NATRC Region 3

John Volkerding - Editor

PO Box 687

Flora Vista, NM 87415

**Board of Directors**

Sharon Roper-Dashner, President, At-Large 970-242-9278 sjroper9345@aol.com	Bobbi Hansford, Vice President Dist 3 970-856-7902 horsebroke@yahoo.com	Chuck Smith, Treasurer, Dist 3 505-215-2625 (C) csmith@advantas.net
Pam Galchutt, Secretary Dist 2, NBOD Alternate 719-481-6561 pamegal@juno.com	Janna Combs, Dist 1 970-576-5606 jannac@sanarroyo.com	Sherri Halligan, Dist 1 303-420-1025 (H) shalligan@qwestoffice.net
Syndi Scott, Dist 2 303-660-6008 syndi_scott@yahoo.com	Pam Galchutt, Dist 2 719-481-6561 pamegal@juno.com	Chuck Smith, Dist 3 505-215-2625 (C) csmith@advantas.net
Bobbi Hansford Dist 3 970-856-7902 horsebroke@yahoo.com	Sharon Roper-Dashner, At-Large 970-242-9278 sjroper9345@aol.com	Juleen Feazell, At-Large 970-856-1173 gifeazell@tds.net
Diana Marquardt, At-Large 970-887-2450 horsescycles@comcast.net		

Committees

Syndi Scott, Publicity/Advertising 303-660-6008 syndi_scott@yahoo.com	Juleen Feazell, Awards/Mileage 970-856-1173 gifeazell@tds.net	Chuck Smith, Historian National Convention 2013 Chair 505-215-2625 (C) csmith@advantas.net
Diane Wingle, Ride Coordinator & Ride Book 303-279-1290 dianew0@yahoo.com	Linell Miller-Inman, Safety/Supplies 303-644-5895 lmiller.inman@gmail.com	John Volkerding, Stirrup Editor 505-215-2625 (C) dr.john@gunnyding.com
Betty Wolgram, Membership 970-824-8359 bkwranch@hughes.net	Chuck Smith, Webmaster 505-215-2625 (C) csmith@advantas.net	Beth Sims, Worker Points 505-326-6797 (H), 505-320-6868 (C) beth_sims@q.com
Sharon Roper-Dashner, Nominating 970-242-9278 sjroper9345@aol.com		

Region 3 National Directors

Susan Peters 719-488-2267 sapeters@pcisys.net	Jerry Sims 505-326-6797 beth_sims@q.com	Pam Galchutt, Alternate 719-481-6561 pamegal@juno.com
--	--	--

From the Editor...

I ran a half marathon this weekend in Pagosa Springs and as I get delirious somewhere in my runs I tend to think about the similarity of trail runs to NATRC rides (thanks goodness there are not P&Rs on my runs) in that there is an animal that is going through a course competing against others as well as themselves.

As we were driving back home and I was reading the promotional material handed out, I came across an advertisement for the following

<http://www.rideandtie.org/>

Ride & Tie has been in existence since 1971, it is a relatively unknown sport that combines trail running, endurance riding, and most of all, strategy. The object is

to get all three team members (two humans and one horse) across a 20-100 mile cross-country course by alternating riding and running.

I write about it not to necessarily advertise it since I know nothing about it but to reflect on the fact that in this event all three participants have to run at some point as a team and it is an important reminder that we shouldn't ask someone (or something) else to do that which we are not willing to do ourselves.

**Pinon Mesa CTR Results, April 20-21**

A-O/N/CP Total Riders: 36

Chair: Jerry Sims

Judges: Boyd Emond DVM, Becky Rogers

CP Combo- Nathan Arizona/Sims, Beth

Novice Sweepstakes: Cadence/Tucker, Nicole-95

Open Sweepstakes: Hot Saki/Smith, Terri-99

Open Heavyweight

1/4 Peanut/Baker, Matt

2/2 Awesomes Fire N Ice/Wolgram, Ken

3/5 Bailey's Angel Baby/Westmoreland, Cheryl

4/6 Bookcliff Mountain Fire/Bingham, Kenneth

5/1 Magical Serenade/Halligan, Sherri

6/3 Mariah/Wingle, Bill

Open Lightweight

1/1 Hot Saki/Smith, Terri

2/3 Cedar Mesa Rushai/Mason, Judy Wise

3/2 Phantom's Masquerade/Lane, Roxann

4/4 GE Spartan/Jarrett, Cheryl

P Nadrah/Gist, Wende

Novice Heavyweight

1/1 Cadence/Tucker, Nicole

2/2 Charito/LaRue, Sheryl

3/3 MSA Chloe/O'Brien, Wava

Novice Lightweight

1/1 Rocky Top II/Koons, Pam

Competitive Pleasure

1/1 Nathan Arizona/Sims, Beth

2/3 Kashmirii Fadmar/Hansford, Bobbi

3/6 The Missouri Reverend/Wingle, Diane

4/2 Turnner's Wild Card/Ward, Lin

5/ Golden Ambition/Bingham, Kerry

6/4 Napoleon Dynamite/Black, Michelle

/5 Slick's Bar-B-Doll/Rubenstein, Angie

Rockin E.Z. Raven/Ancell, Steve

Gen's Rockin Shadow/Ward, Jim

Summer/Wolgram, Betty

Tres Beau/Poulton, Jennifer

Rambler's Danny Rose/Carman, Jody

Ananda Tsarina/Whitman, Benedikte

B-N Total Riders:

Chair: Jerry Sims

Judges: Boyd Emond DVM, Becky Rogers

Novice Sweepstakes: Wrangler/Pape, Katheryn-95

Novice Heavyweight

1/1 Ted/Johns, Daniel

2/3 Trigger's All Distance T/Daney, Devon

3/2 Mijo/Miller, Robin

4/4 Cody/Cordova, Lorraine

Novice Lightweight

1/1 Wrangler/Pape, Katheryn

2/2 Tabooli/Johns, Kathleen

3/3 Regalo/Rowland, Alix

Novice Junior

1/1 Kolt/Pape, Emily

**Navajo Lake CTR Results, May 11-12**

A-O/N/CP Total Riders: 31

Chair: Cathy Cumberworth

Judges: Darlene Wehr DVM, Kim Cowart

CP Combo- The Missouri Reverend/Wingle, Diane

Novice Sweepstakes: Cadence/Tucker, Nicole-95.5

Open Sweepstakes: Touch's Yeller Gold/Inman,
Gary-96

Open Heavyweight

- 1/3 Touch's Yeller Gold/Inman, Gary
- 2/1 Duke of Shadow Canyon/French, Kandace
- 3/4 Moonlight Gambit/Bulcock, Bob
- 4/5 Amiri Zambis/Bulcock, Debbie
- 5/2 Mariah/Wingle, Bill
- CO Bailey's Angel Baby/Westmoreland, Cheryl

Open Lightweight

- 1/1 SA Harolds Honey/Combs, Janna
- P Hot Saki/Smith, Terri

Open Junior

- 1/1 Red/Combs, Alexis

Novice Heavyweight

- 1/1 Cadence/Tucker, Nicole
- 2/3 Trigger's All Distance T/Daney, Devon
- 3/4 Precious Easy Aces/Petzold, Sarah
- 4/2 Smokin Cezanne/Chaffee, Diane
- 5/6 Showboat Cheyenne/Conne, Linda
- 6/5 La-da-de/Kirn, Patty
- P My Mojo/Milewski, Teresa

Novice Lightweight

- 1/1 Dash of Quick Silver/Simons, Sandie

Novice DO

- DO 1 Fargo/Krzykowski, Carol

Competitive Pleasure

- 1 Baby/Summer, Susie
- 2/2 The Missouri Reverend/Wingle, Diane
- 3/ Babydolls Spotted Man/Miller-Inman, Linell
- 4/ Turner's Wild Card/Ward, Lin
- 5/1 Nathan Arizona/Sims, Beth
- 6/3 Pride's College Boy/Bray, Sherrie
- /4 ROCK'N E.Z. REY/Sims, Jerry
- /5 Gen's Rockin Shadow/Ward, Jim
- /6 Golden Ambition/Bingham, Kerry
- Napolean Dynamite/Black, Michelle
- Rambler's Danny Rose/Carman, Jody
- Tres Beau/Poulton, Jennifer
- P Ananda Tsarina/Whitman, Benedikte

*Welcome to NATRC, By Jerry Sims*

So you are new to competitive trail riding, we have all been in your shoes and most of us continue to learn more at every ride we go to. Competitive trail riding has given us the chance to see many new places to ride and to meet many new faces. We become friends with many and we all become family, we help each other even though many compete against each other. You will find the best trainers in the USA in NATRC and it offers the opportunity for you in other to become the same. You will find horses and riders become one over time. You will discover what is; a really good competitive horse and how to ride an athlete, like an athlete.

You will find many volunteers making NATRC rides happen. Some volunteers are very quiet and not seen at all. Many you can't help but see, but they are all giving back to the sport they so love. Without volunteers, we could not have rides. Volunteers are riders or people who love horses and the sport, giving back, so others can enjoy competing or just having fun and learning about our sport. Please feel free to volunteer, we need new people to step up. Remember these volunteers are not getting paid. They are there so you can enjoy the ride. There is an old saying in NATRC; are you a rider or a passenger? The same stands true when giving back to the sport. Are you a giver or a taker? It is always better to give than to receive.

There are many rides across the country and you can travel to as many as you like. Just remember, everyone is trying their best at the volunteer level and so are the judges, who get paid very little to do their job and some do not get any pay because they volunteered to do the job without pay. Judges are looking at you as the color of black and white. You either did it right or wrong. Sometimes we have to judge by splitting hairs, because the competitors or horses or so close, but we all try are best to be fair. You also have to remember judges only get to see you for a short moment and what happens in that moment is what they have to judge. When I judge a ride, I try my best to give you educational remarks on your score card. Here is what you did wrong and here is how to improve it. If you did something good; here is how to get to excellent. I know some of us are a little gruff and we don't mean to be. We really try to be good at heart. Just get to know us. There is no way possible to remember all the names of people we meet, so please forgive us, if we forget your name as we grow older.

There are no clicks in NATRC, we do not have any keep out signs, please feel free to get to know us. Yes we have are friends we like to hang out with and you could be one of them. I challenge you all to become the best you can be in whatever you do. Remember, no one broke any records just thinking about it, practice, practice, makes perfect!!

For the local folks living in the four corners area there is the summer 2013 addition of the Majestic Living Magazine. Check out the article, Centuries-old Partners on page 56. A story about NATRC, which Dr. Bill Cumberworth and I did in April 2013. It may be on line by now, if not keep checking. www.majesticlivingusa.com click on the cover to access. Summer 2013. Cover is a bronze baseball catcher. Also there is another article in www.fourcornerssports.com Both magazines have some wonderful pictures also.

You can contact Jerry Sims through his wife's email; beth_sims@q.com

**Ride Manager's Column, by Susan Peters**

This column is devoted to questions that many riders might have:

1. If my horse gets in trouble (colic for example) what kind of treatment can I expect? After all, there is a vet judge at the ride?
 - a. First, ride management contracts with the vet judge to judge horses – they are not supposed to act as a treatment vet.
 - b. Second, if the vet judge is from out of state, they are at risk of losing their vet license if they practice medicine in a state where they are not licensed.
 - c. In addition, most vets especially out of state vets do not have any equipment or any medication with them (rules about transporting across state lines and inability to get the medications on a plane prohibit out of state vets from bringing in medicine).
 - d. At some rides – a local vet may be on site (an onsite vet is not common and is considered “above and beyond”).
 - e. Sometimes vets who are competing as riders are able to step in and assist. But again – they are not considered a “treatment vet”; treating horses is an “above and beyond” for them as well.
 - f. What you can expect from ride management is a list of local veterinarians/phone numbers and identification of the locations for pick up by an emergency trailer (the emergency trailer will get your horse back to your trailer at camp where you can then transport them to a local vet clinic)
 - g. An additional comment is that ride management does not have horse medications. When we have had situations that required bute or banamine, for example, the riders in the competition came forward and gave/loaned their personal medication to the rider with the colicky horse.
2. A judge came around at 10:00 at night and docked me a point for “low water”. Isn’t that kind of nit-picky?
 - a. The #1 cause of horses having serious issues (colic, metabolic issues, exhaustion, etc.) is dehydration. A lot of horses will not drink on the trail and will often arrive at the ride dehydrated from the trailer ride. So the horsemanship judge will always check the amount of water available to your horse because lack of water can cause such serious issues.
 - b. By 10:00 at night, the horsemanship judge will have put in a 16 hour day so if he/she is doing a trailer check at 10:00 PM, she/he is really dedicated. This judge would have felt that you had gone to bed and the horse was now going to have very little water available until morning – so saw that as a serious oversight and hoped the point off would be a good coaching example of the importance of having water in front of your horse at all times.
 - c. Make sure your horse’s bucket is always full – if your horse is likely to drink the bucket down before you can refill it, either have two buckets or a large muck bucket available.
 - d. It is disappointing to lose a point on a ride, but a lost point is a really cheap price for a valuable lesson of the importance of having water available at all times for your horse (especially cheap if it prevents a colic situation).
3. Why don’t all rides provide ribbons for CP/Open riders?
 - a. When a ride manager/management decides to put on a ride, they are financially responsible for the outcome of the ride. So in the example where an individual or group of individuals puts on a ride, if the ride makes money – they decide what to do with the profits – and if they lose money, any loss comes right out of their personal bank accounts. The breakeven point of a ride varies from ride to ride – depending on the expenses (do they have to fly judges in, for example), the entry fees, and the number of riders. Rides with lower number of riders may just break even or lose money – in that case the prudent thing to do is to keep your expenses as low as possible and not buy ribbons/awards.
 - b. When R3 decided to pay for novice ribbons, they polled CP and Open riders. The responses from these riders was that they were OK with not receiving ribbons (most people said they had boxes of them). This decision is reevaluated every year – so if feelings differ, please let your district/at large board members know.
 - c. In the past, riders would often donate ribbons/awards. This is also a very common practice with national awards. Any rider is welcome to donate ribbons for the CP class (cost is \$18 per ride) or for the Open class (cost is \$54 per ride) – – just let the ride manager know of your interest prior to January of ride year so they can order the ribbons.

These answers come from putting on close to 20 clinics/NATRC rides and competing in over 100 rides and are based on my personal experience. Others may have even better answers to these questions. Whenever you have a question about a “rule”, judging, etc. – – be sure to ask several people what they think– other riders, judges, and ride management are good sources. I always ask a lot of people – because I find I often get different perspectives on the same question from different people.

**Navajo Lake Ride, Janna Combs**

Saturday morning started out great. The weather was not too cold, the heater worked in the trailer, I made coffee, Lexi had a yogurt, we were saddled and ready to go. We both had hot horses, mine being her 23rd ever in the saddle ride, I had my hands full with all the excitement, sounds, people, dogs... but so far, it was good. I had ridden her down the Saturday morning trail the day before, all was good, right? Dr. Joe and I discussed strategy about my ride with a colt Friday night, he thought perhaps it would be good to start out fast, get ahead of everyone right away, likely giving her a chance to catch her breath and be in tired but good shape when I came in.

And that almost worked...

I timed out first, thirty seconds later, Lexi came up behind me and took the lead, we started "skipping thru the dew" so to speak down a little hill, with a log on the left side. Turned out to be a mountain lion, or so my horse thought, and the next two horses crested the little hill all at the same time. I lost my reins after the first buck, 8 seconds later and 82 feet away, (I counted later when I got my visor from my helmet), I hit the dirt. After 20 minutes chasing a sweaty and excited palomino mare around camp, I remounted and finished the absolute 'prettiest' ride ever. And I didn't get lost. (another story).

Thank God for my daughter Lexi, I don't know what I would have done without her. She has been so much help to me on these rides, and it is about time she pays back for all the times I fed her horse and all the hay I've bought for him, right? Shoes, grain, red tack, new saddles, bridle, boots, etc...

Bittersweet though, Terri Smith, who, in my opinion, is the best NATRC rider ever, had to pull her horse, he had a sore shoulder. Terri has been very helpful and is a great role model for my daughter. I (and everyone else, though most won't admit it), like to follow Terri and see how flawless she does each obstacle and go home and practice it... Anyway, since I was the only lightweight open left, I WON! Thanks Terri.

In summary, I got a blue ribbon, some great gifts, and an absolutely Fabulous ride and some humble pie. My pride hurts worse than the sore butt I got from the landing.

And as always, 'concentrate on staying on, not falling off'!

Four Corners Equine Rescue

**Four Corners Equine
Rescue**

Located just outside Aztec, NM, Four Corners Equine Rescue (a 501(c)3 non-profit) primarily takes in equines from law enforcement. FCER will also take in horses from owners if the circumstances are indeed dire. Once rescued, all horses go through rehabilitation, then evaluations and possibly additional training and finally horses are made available for adoption.

All potential homes are screened, and a contract includes a 6 month probationary period. Run entirely by volunteers for over 9 years, FCER uses all donations directly for the horses. Volunteers for yard work, fundraising, and horse socialization are always needed.

Currently FCER has over 20 horses available for adoption. These horses range in age and training. Much more information is on the website - www.fourcornersequinerescue.org or by calling 505-334-7220 !

**Competitive Trail Riding Safety by Jerry and Beth Sims**

At the last board meeting of Region 3 we were asked to write an article on safety while riding in a competitive trail ride. We may miss a few points, but here are some things we put together, thinking about some past experiences we have had riding competitively, managing rides, volunteering and judging rides.

First, common sense and courtesy is given to all of us to use. We need to be considerate to all. Remember, horses are a herd animal, they want to go with the herd, so think about this when horses are watering, when someone is mounting, when you are passing a slower horse or just leaving the herd to go down the trail. A few years ago, a friend of many was mounting his horse at a competitive trail ride, when another rider flew past him. Our friend's horse spooked and he was drug down the trail. He never recovered from the injuries and finally past on. How could we possible get over this, knowing we caused the accident? Riders mounting their horse are not in a safe position. Stop and wait for them to get on before you go by!

Passing on the trail is allowed. First ask permission. Next tell the rider you are passing; you are passing on the left or right side and always pass in a safe place where there is plenty of room. Horses kick, so make sure you have enough room to pass. Be considerate after you pass. If you are passing and slowing down or you continue to stop and re-pass the same riders, you are not being considerate of others, you are being a pest. The riders who ride at a constant speed seem to do better than those who rush and then have to wait. Remember, some riders do not hear as well as others, speak loud and clear when asking permission to pass.

You get points off for following too close. It is annoying and it is dangerous. If you cannot see if the horse in front of you has shoes on, you're too close and the faster you go the further back you should be. You can easily run over a horse in front of you and injure the horse and rider, if you are too close. Have you ever been run over with another horse while mounted? We have, why did it happen? The other riders were following too close and had no control. Have you or your horse ever been kicked, by a passing horse? It can happen and you could have a broken leg and your horse could be injured!

There is an old saying; two is company, three is a crowd. Riding in a bunch is not only difficult to judge, but can become dangerous. A crowd at a judging observance can grow into close quarters, which can get horses and riders hurt. Riding in pairs is less stress, you're safer and you are watching out for each other. Usually the first rider in a bunch is the only rider who will not get points taken away from the horsemanship judge. The rest get points off, because the judge could not judge the riders, since the entire groups were so close together and the judge only had time to try and get the numbers of the riders and could not actually observe the riders or horses. Also, riding in a bunch makes more waiting time at a judge's obstacle. Most obstacles take thirty seconds to a minute. Five horses waiting takes five or more minutes and then more horses pile up making more waiting time, horses can become anxious, riders become nervous, now they become un- aware of what is going on around them. It can become dangerous.

"Situation Awareness," while standing in line with your horse. Many horses and people get hurt, because there is not enough space between horses. This is especially true when you are checking your horse in with the judges. Be aware of what is going on around you and your horse. Stay far enough away from the judges and secretaries table so your horse can not harm them. You also have to be careful when the vet judge ask you to come up so they can examine your horse. If they are standing too close to the table, ask the vet judge to move out away from it. I have seen judges take points off, even when the vet judge directed you to them.

Pulse and respiratory checks; feeding your horse makes the horses next to you want food also. Heart rates go up and horses can become aggressive and dangerous.

Please ask the person next to you in line if they are done and you can leave, before leaving a pulse and respiratory stop. Remember horses are a heard animal. Having to wait two are three minutes is a common courtesy, we have even waited the full ten minutes for someone at a pulse and respiratory check, because they asked us to. You can get your time back, by telling the judges. Some pull their saddles. Make sure your saddle is not only out of your space, but out of others. Stand quietly as possible, try to get your horse to stand quietly. An anxious suturing horse causes other horse to stir and heart rates go up. Take your horse out of line and try to settle them.

If you know your horse kicks, tie a yellow ribbon in its tail to tell other riders.

Common sense goes along ways and so does a defensive "rider," you continue to be aware of what is going on around you. What if and what could happen? You will become a safer rider; you can help others to become safer.

A good ride is where everyone had fun and got home safe!

Have a safe and fun ride and enjoy your time on the trail with a majestic creation.

Remember; to win is to finish the ride and safely.



Sponsors

Be One with Your Horse



ACTION RIDER TACK

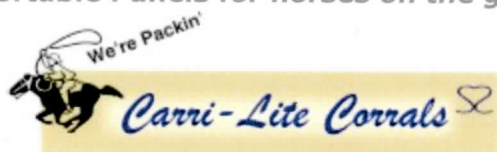
<http://www.actionridertack.com/>

Horses Move as Freely as Not
Wearing a Saddle at All....



<http://www.advantagesaddles.com/>

Portable Panels for horses on the go!



<http://www.carrilitecorrals.com/>

**Promoting Excellence in
Safety and Education**



<http://www.cha-ahse.org/>

Trail Horse Riding Gear and Endurance Tack



<http://www.ridingwarehouse.com>

Learn about our 3-D
Adjustable Fit System

**Specialized
Saddles**

The one with adjustable fit.

<http://www.specializedsaddles.com/>

Fit to Function



SR Saddle Company
Fit to Function

<http://srsaddleco.com/>

Finally, A Hay Net for Round Bales



<http://www.texashaynet.com/>

The Right Way to Tie Your Horse

TieRite



Your Source for Witez II Bloodlines



<http://www.chiggervillefarm.com/>

Top Quality Beta Biothane Horse Tack



<http://www.thedistancedepot.com/>

Cutting-edge Alternative Horse Care



<http://www.easycareinc.com/>

Customer Satisfaction is Our Number One Goal!

Honor the Talents and Abilities of all Gaited Horses

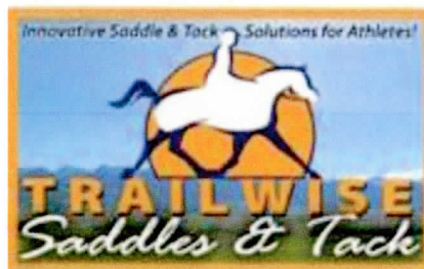


Friends of Sound Horses, Inc.

<http://www.foshgaitedsporthorse.com/>

<http://www.tierite.com/>

When your ride, ride Trailwise!



<http://www.trailwisetack.com/>

*Lightweight Portable Corrals
Travel with Confidence*



<http://www.travelncorrals.com/>



NATRC REGION 3 BOARD OF DIRECTORS MEETING, FEBRUARY 21, 2013

LOCATION: Denver, Colorado- Double Tree Hotel. (Regional and National Convention)

CALL TO ORDER: at 6:32PM by the president, Susan Peters

ROLL CALL: A sign-in sheet was circulated. Present were:

Board Members: Susan Peters, Pam Galchutt, Sherri Halligan, Bobbi Hansford, Sharon Roper, Beth Sims, Jerry Sims, Juleen Feazell, Dianna Thearin, Chuck Smith, Janna Combs, Diana Marquardt,

Guests: Judy Mason, Kay Gunckel, Dave Dashner, and Angie Rubenstein

Susan noted that both old and new board members can vote.

Approval of Board Minutes from Chokecherry meeting on September 21, 2012

Betty Wolgram submitted by email several changes: a few typos and she noted that the item "STANDING RULES NUMBER 1" regarding approval for price of advertising should be removed because it had been eliminated previously and did not require a vote.

Motion to approve minutes as amended, moved by Janna , seconded by Sherri: all were in favor. (Revised minutes are attached).

REPORTS:

Treasurer Chuck Smith: there is \$23000 in the bank plus \$17,000 in savings. We have no financial problems at this time, but this is the first year we have not added to the 'kitty'- we are staying level. The funds have been building a cushion over 50 years and it is important to use the money productively.

Susan noted that Region 3 is first in the country on average number of riders (47). All regions had increased numbers but the region 2 had the worst average (24), and overall national average was 34. The rider numbers had been rising until 2007, when the numbers "dropped off the cliff" (gas cost and the economy). Compared to 2006, we are down 50%. National revenues are \$99,000 with ride fees accounting for \$22,000 of that, the Raffle was \$10,000 (MachuPichu) and sponsorships were \$10,000. Ride entry fees and donations were shown in 4 or 5 categories and a national budget was set . She would like to see Region 3 do a similar breakdown and once Chuck sees the convention results, we can set a budget. We expect \$11,000 to \$ 15,000 income to determine discretionary spending, now that we are at break- even status.

Susan noted that Region 3 is first in the country on average number of riders (47). All regions had increased numbers but the region 2 had the worst average (24), and overall national average was 34. The rider numbers had been rising until 2007, when the numbers "dropped off the cliff" (gas cost and the economy). Compared to 2006, we are down 50%. National revenues are \$99,000 with ride fees accounting for \$22,000 of that, the Raffle was \$10,000 (MachuPichu) and sponsorships were \$10,000. Ride entry fees and donations were shown in 4 or 5 categories and a national budget was set . She would like to see Region 3 do a similar breakdown and once Chuck sees the convention results, we can set a budget. We expect \$11,000 to \$ 15,000 income to determine discretionary spending, now that we are at break- even status.

Susan stated that volunteers are more scarce than is money, especially in regions most challenged by low ridership. Region 3 has had 12 rides at one time, but now we are down to 7 rides because of management burn out. It takes at least 30 volunteers to put on a ride. Having fewer volunteers puts even more stress on management. Managers need to take a break to forget the pain! Luckily we have great riders who are flexible, and that attitude helps a lot. So, we need to all be thinking about how



to get more riders and how much we should spend to do that. Also, we need to evaluate if the spent money gets results and how. One expenditure planned toward that is for the Horse Expo. We are spending \$225 for two horse stalls in the barn. One will be for a horse and one will be for a 'booth'. This is much cheaper than renting a booth in the vendor area.

Chuck mentioned that this could be the third year in which there is no benefit ride for the region. We 'could' make about \$3,000 off the convention but we have to split that with National.

Motion to approve the Treasure's report: moved by Sharon and seconded by Bobbi. All voted in favor.

NATIONAL BOARD REPORT: Susan Peters

There is a cool raffle coming up this year. Jim Ward is running it. It will be for a dude ranch vacation at a choice of several places. National took in, and also spent \$100,000. They lost \$16,000 3 years ago, but now are break even. The biggest expense is for "Hoof Print" printing, but it used to be \$24,000 and is now down to \$10,000 thanks to mostly electronic distribution. Another large expense is for Laurie, the Executive Administrator, at around \$40,000 a year salary. They are discussing some changes, like allowing the ride secretaries to also ride. They also modified the rules on portable corrals, making stallions excluded (stallions must be double tied). They also discussed the impact of low ridership on getting National Championships because of lower points. One idea is to combine Heavy and Light weight or lower the number of points required.

Jerry commented that the national board members are a very dedicated group of people.

MEMBERSHIP: Betty Wolgram (absent). Betty emailed her report (attached). Betty suggested that we have an earlybird renewal drawing to apply by the end of May, perhaps for a free ride entry, anywhere and transferrable. But the region would have to pay to cover that. It was suggested that the board should decide on that during the fall, for the following year, and it be widely publicized using free media. Other incentives were discussed, such as giving a discount, giving existing members some kind of credit for bringing in new members, pro-rating mid-year joiners if they are new, or having a new member only special drawing. We need to find out why we are losing some members. After 2 seasons they seem to drop out. Why? A "monkey survey" might be useful.

Jerry sent a report to the national board (he is the National Membership co-chair). He feels people leave because they are not asked to be involved. He cited his story of his first ride and how he almost didn't renew. Susan mentioned the Rabbit Valley clinic approach of small group with a mentor. The Judges have a big effect by their comments and need to make them more 'educational' and not insulting or causing embarrassment. Jerry suggested the board think about membership retention and that we not act on the early bird incentive today.

STIRRUP: John Volkerding (absent). No report. The next issue is coming out in early March. Susan said that the President needs more support on submitting articles. Beth would like know when deadlines are for articles.

RIDE BOOK: Diane Wingle (absent). She emailed her report. She mentioned that Jerry sold a lot of ads and so the cost was covered plus a bit of profit. 500 Books were printed for 200 members and other interested people and for handing out by ride managers.

PUBLICITY: Syndi Scott (absent). She is involved in the Denver Horse Expo with a \$225 budget to cover the two stalls and \$75 for required insurance. The photos from prior expos have disappeared, but we have photos from Bill Wingle and Gary Walls and a video produced by Steve Galchutt to use. Pam made up a "Why Do NATRC?" flier (includes the 2012 region schedule) to hand out. Sharon requested a copy to use for the West Slope Horse Expo, at which she will participate. It was mentioned that



it would be good to have an on-line resource center for access to useful flyers and media. Our new Region 3 website by Chuck was praised by everyone as very motivational.

Question: should we authorize Publicity a budget so they don't have to request funds from the board in case of sudden needs/opportunities. Syndi had a possible last minute ad opportunity in a New Mexico magazine but missed the deadline because of needing a expenditure approval.

Motion to authorize up to \$200 per trimester, for use by Publicity, without board pre-approval IF needed immediately: moved by Sharon and seconded by Jerry: all voted in favor.

HISTORIAN: Chuck Smith. Chuck has received nothing recently. He would like to get rider lists and photos. John probably has them from past newsletters- Chuck might be able to go back to past issues and cut/paste the results.

Susan said that Pat Jubb of Colorado Springs, has passed away. She was very involved in both national and regional NATRC and was a horsemanship judge. Her son, Mike Jubb, doesn't drive and would appreciate rides to events. At the National banquet, new president Kim Cowart will announce all those who have passed away this year who were significant in NATRC.

SAFETY: Linell Miller-Inman (absent). No report

WORKER POINTS: Beth Sims (present). Beth emailed a report. She has set up a new format to make it easier for ride managers to report. Beth always keeps a hard copy backup. Beth thinks that perhaps safety and pre-riders should get the same points as trail markers. She will bring that up at the June meeting, or at the October meeting when Standing Rules are revised.

AWARDS: Juleen Feasell. A report was emailed. This year she used a new engraver and saved about \$1,000. She would still like to keep the former vendor in Farmington for backup who does do a good job. Betty got good pricing value for 100% club jackets at \$25/each. Juleen has changed the mileage awards to etched glass instead of pewter. That will save \$653 over last year. She still needs to get a few more mileage tags.

NATIONAL CONVENTION: Chuck Smith. It is moving along and we will know more in a few days. He credited Susan Peters with coordinating a lot for the hotel and convention.

BENEFIT RIDE: there has not been one since 2010 at Purgatory. The rules on it are "mushy" as to if it is all or part of a ride's profits. Usually it has been around \$1500. The question is, do we want to do a benefit ride and who will do it. Jerry Sims volunteered to make Pinon Mesa the benefit ride this year. He said that people donate a lot of awards which saves money. He is ordering blankets for Sweepstakes awards. He will put an article in the Stirrup asking for donations to benefit the region.

ALTERNATES: there will be one from each area but they will be more at large to cover any board member who first states they will not be present. Diane Wingle, District 2 and Dianna Thearin, District 3, have graciously agreed to be the new alternates.

BOARD OFFICER ELECTIONS:

Current Positions: President, Susan Peters; Vice President, Sharon Roper; Secretary, Pam Galchutt; Treasurer, Chuck Smith.

New nominations:

- Treasurer: Chuck Smith was nominated by Janna Combs, seconded by Diana. All voted in favor
- President: Sharon Roper-Dashner nominated by Chuck Smith, seconded by Jerry Sims seconded. All in favor



- Vice President: Susan gave the job description (conduct elections; fill in for the President) Bobbi Hansford was nominated by Jerry Sims, seconded by Janna Combs: all in favor
- Secretary: Pam Galchutt was nominated by Janna Combs, seconded by Juleen Feazell: all in favor

NEW BUSINESS:

NEW POSITIONS and Bylaw proposals: Susan discussed a possible need for a special awards chairman to keep track of the Novice Riders for the award sponsored by John Horne and also the 100% Club members award. We could also use a Social Media chair. Kerry Bingham was suggested as being good for that.

Susan also suggested the District boundaries might need addressing to better divide the membership more evenly.

TRAIL FUND: there is a \$1000 donation from the 2011 Tarryall River Romp Ride sitting in the Region's account. IT was designated to be a matching fund for trail improvements or projects in the Region. There have been no requests or proposals. She proposes putting a term limit on the funds. If it does not get used by the end of this year, it should be returned to the donor. Attempts to work with the US Forest Service to use it have not worked out (its original intent), because the USFS cannot accept cash donations... it would have to be through an organization giving materials and or labor. Sharon mentioned that the BLM has been very receptive in her area and are big on cooperative use. She thinks there is a good need for more triangular "trail etiquette" user right of way signs on public lands. Susan said the board should think about it and make a decision by year end.

Susan passed the President's gavel to Sharon. Sharon thanked everyone for their trust and said she will need a lot of help.

ANNOUNCEMENTS"

Jerry Sims (National Board Representative), said that he has been asked by incoming President, Kim Cowart, to be the Membership CO-chair, responsible for recruiting and retaining members. He has also been requested to be the recruiting Membership Chair for Region 3. They are still looking for a retainer National Membership chair.

Jerry has taken in informal poll of 3 riders - one a new member, one a 3rd year member and one a seasoned rider: 1- what got you interested in NATRC?; 2- Why did you join?; and 3- Why are you still a member?



NEWS BITS/BARN SALES

Used Sharon Saare saddle, size CC, endurance model no tooling, dropped rigging, older saddle but still in good shape. \$700.

Sharon Saare saddle, size SS, lady leg, endurance model with no tooling, very lightly used, padded seat, very good shape- \$1500

Almost new Sharon Saare saddle, size E- This saddle has a horn with beautiful engraving and only been on a horse about 10 times. \$2000.

Please contact Vicki Heniser,
rexrab2001@yahoo.com or call 970-231-9313.
In Fort Collins.

The web site for the Four Corners Sports addition for the Majestic magazine is; www.fourcornerssports.com

<http://fourcornerssports.com/gallery3/index.php/May-2013/Trailriding>

The magazine has an article on NATRC

Brenda Imus, 4 Beat
saddle for sale
\$1100/OBO
15" seat, wide tree,
supracor padded seat
Questions? Call or
email Angie
Rubenstein, 303-816-
7051
mtnmfrider@yahoo.com



Stay Current with your Email Addresses!

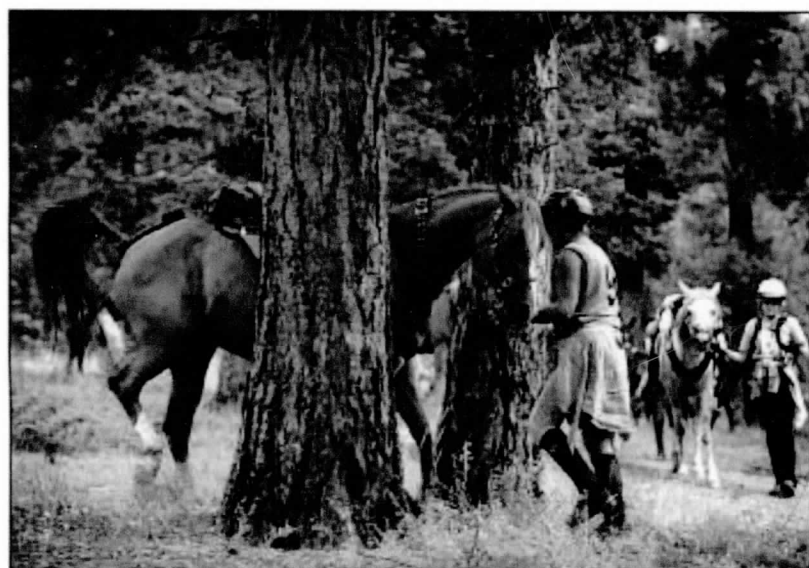
Please notify Betty Wolgram (bkwranch@hughes.net), Membership Chair, of any change to your e-mail address. Doing this will assure that you continue to receive the newsletter and other communications.

Also, Betty Wolgram will be sending out the 2013 member directory around July 1 and need to be up-to-date on addresses, phone #'s, and e-mails. When the directory goes out, those who have not renewed will be dropped from membership for 2013.



NATRC POSTER

NATRC - You're gonna learn somethin'.



NATRC competitors receive both horse and rider scorecards at the end of the ride rating their performance by the veterinary and horsemanship judges. It's like having a two-day veterinary exam and a riding lesson for one low price. What better way is there than to get an opinion on your trail and horse care abilities from your peers—other accomplished horsemen—along with information such as pacing yourself and your horse, use of electrolytes, hoof care and shoeing, conditioning techniques and how to recognize the signs that your horse may be stressed.

NATRC competitive trail riding is a great way to build a partnership with your horse through training, conditioning and education. Come ride with us and discover how the two of you can work and play as a team! You and your horse will build trust and confidence in each other and in yourselves, whether you take home ribbons or not!



To find out more visit: **www.natrc.org**

or contact this local area representative:

name _____

email _____

phone _____



Membership Form

NORTH AMERICAN
TRAIL RIDE CONFERENCEPO Box 224, Sedalia, CO 80135, 303-688-1677, Fax 303-688-3022
www.natrc.org, natrc@natrc.org

MEMBERSHIP FORM - RENEW, JOIN OR PURCHASE ITEMS ONLINE AT WWW.NATRC.ORG

Memberships run from January 1-December 31. We offer eight membership plans: four Regular, two Lifetime and two Platinum. The Platinum plans receive all the benefits of the Regular plans plus personal excess liability coverage with a \$1,000,000 policy limit.

CHECK PLAN DESIRED

REGULAR MEMBERSHIP: All memberships include: electronic national newsletter-*Hoof Print*, your region's newsletter, E-News subscription, eligibility for annual national and regional high score awards and championships, horse and rider mileage awards, reduced ride entry fees, sponsor discounts, and automatic membership in your region.

- ___ **FAMILY.....** \$90 /yr Household of 1 or 2 adults & children under the age of 18 as of Jan 1 (2 votes)
 ___ **SINGLE** \$60 /yr Single adult member (1 vote)
 ___ **ASSOCIATE...** \$50 /yr Equine-related groups or businesses only (no vote)
 ___ **JUNIOR.....** \$40 /yr Single Junior member under age 18 (no vote)

LIFETIME MEMBERSHIP: One time membership payment.

- ___ **FAMILY.....** \$10,000 Household of 1 or 2 adults & children under the age of 18 as of Jan 1 (2 votes)
 ___ **SINGLE** \$ 5,000 Single adult member (1 vote)

PLATINUM MEMBERSHIP: Platinum members receive insurance benefits thorough Association Resource Group-ARG. Platinum members receive personal excess liability coverage with a \$1,000,000 policy limit. Coverage is for claims brought against members of NATRC (Platinum) arising from the use and/or ownership of a horse and for horse-related accidents involving third party bodily injury or property damage. Coverage will apply when engaged in any horse related activity, and coverage is in excess of any existing valid and collectible insurance. There is no deductible. Professional Liability is not included. Business exposures are excluded.

- ___ **FAMILY.....** \$130 /yr Household of 1 or 2 adults & children under the age of 18 as of Jan 1 (2 votes)
 ___ **SINGLE** \$ 80 /yr Single adult member (1 vote)

ANNUAL LIFETIME MEMBER PLATINUM UPGRADE: ___ \$40 Family ___ \$20 Single

NATRC Specialties (Optional)

- ___ Patch (inc. w/new membership)..... \$5.00
 ___ 10" Round NATRC Emblem Sticker.. \$5.00
 ___ 4" Round NATRC Emblem Sticker.. \$3.00

A 2013 Rule Book is free with your membership. To save NATRC \$\$\$, the Rule Book can be downloaded from www.natrc.org or a hard copy can be requested by checking here ___

Hoof Print will be delivered electronically. To receive a print copy, please add \$15 and check here: ☐

\$ TOTAL ENCLOSED _____ (Colorado residents please add 2.9% on Specialty Items)

Please list first and last names, especially those with different last names, of all competing family members.

Name(s) _____ Jr(s) Birthdates _____
 Street _____ City _____
 State, Zip _____ Phone (____) _____
 Email _____

(WE REALLY NEED YOUR EMAIL FOR DELIVERY OF HOOF PRINT. IT WILL NOT GO OUTSIDE OF NATRC. THANKS!)

New member? Will you share how you found out about NATRC? _____

***** Mail completed form and check to : NATRC, PO Box 224, Sedalia, CO 80135 *****