



the Stirrup

Region III Newsletter

May & June, 2005

The Region III Newsletter is published bi-monthly. It is available by subscription to non-Region III members for \$10/year.

Display advertising rates:

Full page \$50, half-page \$30, quarter page \$18, business card size \$10.

Classified rates: Members \$5/ad, non-members \$10/ad.

Send all letters, articles, payments, advertisements, photos, etc to:

Sue McKelvy, Editor
P.O. Box 217
Buffalo Creek, CO 80425

Phone: 303-838-2890
Fax: 303-838-8481
E-mail: sumac@idcomm.com

Deadline for articles, ads, etc.
25th of Jan, Mar, May, July, Sept,
and Nov.

Ridin' the Rockies!

Region 3

NATRC!



Region III NATRC Board of Directors:

Kathy Brown, President, District 3
505-776-2575 Natl. Breed, New Members

Kay Gunckel DVM, Vice-President
970-667-2877 District 1, Past President

Priscilla Lindsey, Treasurer
970-630-4530 At Large, Membership
970-396-9193 (cell)

Kathy Shanor, Secretary, District 2
303-840-9369 Ride Book, Natl Conv.

Tracie Scarlett
303-273-9834
At Large, Awards

Jim Ward
719-495-4017
District 2
Publicity,

Jerry Sims
505-326-6797
Dist 3 Mentor

Lin Ward
719-783-9645
At Large, Mentor

Marc Shanor
303-840-9369
Past-president, Safety

Tracey Korthius
970-613-9455
District 1, Awards

National Board Representatives:

Doreen Portner **Susie Witter**
435-259-6980 719-495-4725
Ride Mgr Recog. Ride Mgrs Coord

Committee Chairs:

Janine Ancell - Historian
DeeOverholt - Supplies
Linell Miller - Horseman's Expo
Jeff Brown - Website
Sandy Hollis - Safety
Jim & Lin Ward - Publicity
Dave & Jan Cook - Trails Advocacy

Howdy!

I can't believe it is almost June! We have had 4 on 3 rides already. I have found a need to revisit my new year's message about COMMUNICATION and add SAFETY & RESPONSIBILITY to it.

I want all of us to keep the channels of communication open. I also ask you to emphasize the positive comments a bit more. Think about saying good things when talking with each other. This message is for our judges at briefing...we all know we need improvement but tell us what we did well too! Think about a 5-second rule(not just applicable to food dropped to the floor) if you are going to say something witty or helpful in critique, consider your words from the recipient's point of view...will they offend, discourage or embarrass them? If you are going to make fun of someone...make it yourself!

If you are pointing out a problem, also point out a success! Sugar-coated critiques go down easier!

Regarding SAFETY & RESPONSIBILITY, at a Ride the management is ultimately responsible for enforcing the rules (i.e. "no loose dogs in camp") but it is the riders' responsibility to make certain we are aware of our actions as well as others. A combination of horses, dogs and people can be volatile whether mounted or on the ground. If you see a dangerous situation setting up, the 5-second rule stated above is waived...better to apologize later than to have a medical emergency for horse, dog or person.

Many of you have gotten e-mail information about the Strawberry CTR in June becoming our "Benefit" ride for Region 3. Come out and support the ride. It now will feature a raffle, an auction of wonderful (some new) horse equipment including saddles and fabulous trails and scenery. Some e-mail addresses for our members are no longer valid and some of our members have not provided e-mail addresses to Reg. 3 NATRC. Please do update us with correct information as e-mail is a fast, convenient method of communication and you won't miss out on important and timely messages.

Finally, you are all invited to the Region 3 BOD and National BOD meeting being held on July 9-10 in Denver at the Renaissance Hotel. Reg 3 BOD will start at 9:30 AM on Sunday (10 th). Your Region 3 BOD works hard on issues for you and your input is always appreciated...so stop by and help us out!

Thanks for all you do to promote NATRC, it is a wonderful sport and we have an incredible group of people and horses! Let's take good care of each other!!!

Kathy Brown, President

Contact me at: equine@newmex.com



Kathy & Annie at '04 El Jinete CTR
photo by Cristy Cumberworth

“Necessary NAYTRC Changes” offered by Steve Lindsey

I had the privilege of riding under the judging eye of Cheri Jeffcoat (Horsemanship judge and NATRC President) a weekend or so ago. We had some stimulating discussions on the future of NATRC (N.A.T.R.C. for Ms. Jeffcoat, a purist; “NAYTRAC” for those irreverent few of us who have entered the sport in the last 5 years or so.)

First off, as I see it, the future of NATRC lies not in youth, but in the American senior citizen. They are flooding into NATRC, newbies and sorta-newbies, retired, child-free and mobile. Our numbers are swelling (no pun intended) and consideration needs to be given to a new NATRC division, the Senior Heavyweight Novice/CP (S.H.W.N.C.P.'s or SHEWP's).

First and foremost, the **Judged Mount** for SHEWPs must be eliminated. SHEWP mounting requires two or three aids such as hay bale, ladder, step, picnic table, tail gate or fenders. No element in nature has proven as effective in assisting a SHEWP in **on-trail mounting**. The simple fact is...no SHEWP ever dismounts for any reason during a trail ride. Dropped rain ponchos, gloves, hats, or jackets are considered expendable, lunch can be safely eaten in the saddle and any lame horse can be safely ridden slowly enough to insure no further damages. An alternative is to pair a SHEWP with a younger, more agile lightweight rider.

Such judges' comments as “Pulled Saddle under belly”, “Kicked horse in rump when mounting” or “horse collapsed upon rider's entry to saddle” show an acute lack of knowledge when judging a SHEWP mount. A well-conditioned SHEWP horse has long since learned to accept wrenching as part of mounting and should be judged only on how far he bolts or how quickly he regains his feet. (Note: Many SHEWP horses are caught off-guard at the first P&R by the SHEWP rider dismounting because they become tense, unruly and anxious in anticipation of that unassisted remount in their immediate future).

Recognizing the needless aspect of the **judged inside mount**, the **worthlessness of the judged offside mount** needs no further discussion. Discontinuing the judged mounts will shorten judging time by eliminating the need for the SHEWP to carry hoof pick, leatherman tools or sponge. A well-conditioned SHEWP horse should be capable of continuing a ride with several loose or lost shoes and should be able extricate himself from barbed wire, vines, etc without help from their riders. (Hmmm, a practical vet judge's obstacle?)

Secondly, it is my opinion that the term “Bouncy in the Saddle” should be completely eliminated as a viable observation on the Senior Heavyweight Division rider's card (along with the alternative adjectives such as jiggly, wobbly, floppy, flaccid or shaky). It is physically impossible to hold rein, mane and/or bouncing body parts in such a way as to maintain safety and control. I, myself, have with dogged determination, made an effort to arrest bouncing body parts, only to find the vibration migrating to other parts of my body. Eliminating the requirement for a female SHEWP to wear a “penny” vest would cut down on unfair and prejudicial comments such as “Bouncy in the Saddle”!

I feel that I should point out that in the case of most SHEWPs, bouncing in the saddle should be encouraged as their horses will actually learn to gait to that rhythm, thus the faster they bounce, the faster one can get on down the trail! In the case of a trotting horse, the boby bounce will be self-eliminating, as either: 1. the bouncing body part will gradually get smaller and cease to bounce, 2. the bouncing body part will, as soon as practical, be adequately encased in appropriate undergarments, 3. the body part will eventually lose the ability to jiggle or 4. the SHEWP will choose to leave the sport of CTR to safeguard the function of the bouncing body part, thereby eliminating the problem.

Thirdly, as it is our desire to encourage participation in our sport, regardless of age, race, gender or socioeconomic situation, IT IS IMPERATIVE THE USE OF THE TERM “**SITTING ON THE CANTLE**” BE STOPPED! Many SHEWPs returning to or entering the sport of CTR may be tempted due to financial necessity to drag out their daughter's old pony saddle, clean it up and take it to CTR. GOOD FOR THEM! In my opinion, the mere fact that a cantle, pommel and/or saddle horn is at all visible on a SHEWP's saddle when they are mounted should be viewed by the horsemanship judge as a plus! Besides a small sized saddle could solve the bouncing body part problem.

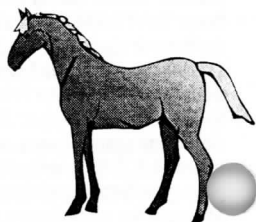
Fourth, before being inducted as NATRC President, an electee should be required to use the term "NAYTRAC" in a sentence devoid of cursing, vulgarity, disparaging remarks, vomiting, spitting or gagging. It should be disallowed for any officer or board member of our august organization to slap, strike, stomp or use one's horse as a weapon against a competitor heard using the term "NAYTRAC" as the need for brevity is essential to senior NATRC members, for their time is precious! Being forced to repeat N.A.T.R.C. over and over could discourage many senior newbies from seeking a NATRC office. Be ye forewarned! However abhorrent to the old timer N.A.T.R.C.-er's, "NAYTRAC" shall still be heard in whispers around the Friday night after-meeting campfires until the number of SHEWP's grows to form a significant grassroots struggle for acceptance until...Oh, Happy Day! We will induct our own "NAYTRAC" president supported by a Board of NAYTRAC directors, perhaps all of whom will be riding barefoot horses! We shall not be silenced on our slide into senility in the saddle.

Susie Witter, Horsemanship Judge, has provided copy of a Chart for doing a Health Check on your horses before calling the Vet.

	Well	Beware	Sick
Eyes	bright, clear	glassy	fixed stare, sunken eyeball
Mucous Membranes	pink, moist	pale, tacky	dry, purple or bluish
Capillary Refill	0-1 seconds	2-3 seconds	4+ seconds
Jugular Refill	1-2 seconds	2-3 seconds	4+ seconds
Skin Pinch	0-1.5 seconds	2-3 seconds	4+ seconds
Heart Rate (10 min. after strenuous exercise)	67 or less bpm	68 bpm in 10-30 min.	more than 68 bpm in 30 min.
Gut Sounds	normal	reduced/increased	absent
Respiratory Rate	relaxed/regular	panting/inversion	labored/abnormal
Hoofbeats/Legs	no heat/swelling	heat/swelling	heat/swelling/pain
Wounds/Saddle/Girth	no visible marks	heat/swelling/tender	pain/raw/bleeding
Muscles/Back	relaxed	tight/tender	very tight/pain
Anal Tone	tight	slightly loose	anus/penis relaxed
Rectal Temperature	less than 101 F pre-ride less than 103F in ride	103-104 F during ride	more than 104 F
Impulsion	free, willing	stumble/short stride	stiffness
Attitude	bright,eats,drinks	depressed/lethargic	dull, not interested, absence of thirst, appetite/urination or defecation

Chatfield CTR (an experience documented)

by Sierra Tullyman



The Chatfield CTR was sure different this year compared to last! We had absolutely beautiful weather for Friday and Saturday of the ride. The attendance to this year's ride reflected the better weather as it was a full ride with lots of first time competitors trying competitive trail riding. I hope they all had fun and will return to other rides in our region. Sunshine sure beats mud and snow!

Our judges, Susie Witter, Horsemanship, and Bethany Grohs, Veterinarian, did a great job on obstacles and seemed to be everywhere the riders were! The obstacles were fair and easy even if I still need to work on mounting and upper body sway problems. There was a large CP class on this ride which made placing a challenge but well worth the effort. As it was our initial ride for '05, my horse's back problems continued to plague us...another pad, a new saddle, chiropractor? Will be working on that one before Cavalier CTR!

My real reason for jotting this down and sharing it with you is the event that occurred on my trip back home after the ride. As I left Chatfield and turned into the merge lane for C-470, I felt a jolt from behind me. It felt as if my trailer was dragging so I pulled over and stopped. I found that the frame of the hitch had almost completely un-bolted from the frame of my truck (bumper pull)! I called a friend from nearby Highlands Ranch to come to the rescue and he hooked up to my trailer so I could get my horse "Matisse" safely back home while I drove the damaged truck. I'm thanking my guardian angel who was on "overtime" for keeping us safe from what could have been a terrible accident. I've had my hitch re-attached with tight bolts and will be checking that and my frame connections each time I take the horse in my trailer from now on. My recommendation to you all is to review at least annually and more often if you can, all hitches and connections between your truck and trailer before, during and after you tow.

My thanks to Donna Johnson, DVM and Kymberlie Shanor for the outstanding job they did in coordination and administration of Chatfield CTR. Kymberlie has got to be one of our youngest-ever secretaries for a CTR in Region 3. She was magnificent! Chatfield State Park is a wonderful location for horseback riding year-round and I'm very happy it is on our CTR list. Thank you for the hard work a ride takes whether it is one day or not!



NATRC Rider Survival Kit: A stick of gum to encourage you to stick to your goals with your horse even in the heat of competition.

A snickers bar to remind you to keep your sense of humor and to have FUN!

A starburst candy to give you a burst of energy for that final check-out.

A chocolate kiss and a hug that represents the affection between you & your horse.

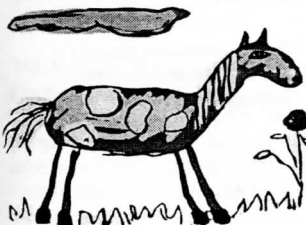
Smarties candies to help you strategize when you encounter clever judge's obstacles.

Tootsie roll to remind you not to bite off more than you can chew!

Matches to remind you to stay *light* in the saddle.

Mints to encourage you to keep your "cool".

With Thanks to Susan Peters





Region 3's Committees

Contact the chair person listed to volunteer and as we would love your skills and input!

Juniors: Kay Gunckel 970-667-2877

Mentors: Lin Ward 719-783-9645

Jerry Sims 505-326-6797

Historian: Janine Ancell 970-247-9717

New members: Kathy Brown 505-776-2575

Safety Coordinators: Sandy Hollis 719-331-0629
Jane Young 303-279-2817

Newsletter: Sue McKelvy 303-838-2890

Ride Book: Sue McKelvy
Kathy Shanor 303-840-9369

Supplies: Dee Overholt 303-838-7510

Awrds: Tracey Korthius 970-613-9455

Horseman's Expo: Linell Miller 303-644-5895

Publicity: Jim & Lin Ward 719-783-9645

Reg. 3 Ride coord: Kathy Shanor 303-840-9369

Reg. Trail advocate: Dave & Jan Cook (no phone at press)

Reg 3 Website: Jeff Brown & Tracie Scarlett
303-273-9834

By-Laws: Kathy Brown, Kay Gunckel
970-667-2877

National Convention: Kathy Shanor & Donna Johnson
720-898-8139

Reg 3 Convent:ion:: Terri Smith 970-325-8813

Ride Manager Recognition: Doreen Portner 435-259-6980

National BOD Updates: Susie Witter & Doreen Portner
719-495-4725

Budget: Priscilla Lindsey & Kathy Brown
970-396-9173 (cell)

Horse Slaughter Issues by Jay Koch

article forwarded by Susie Witter

Over the last few weeks I've been receiving e-mails from people asking for support for a bill to ban horse slaughter in New Mexico. I do not support such a ban. (This bill did not pass the state legislature by the way).

There should be an abattoir right next to each auction house where the meat buyers purchase horses that are destined for slaughter. Having the slaughter houses adjacent to the auctions would do two things for horses. First, they would not be subject to long, painful, inhumane truck rides before they take that last long walk up the ramp to what Temple Granddin calls "Stairway to Heaven". Second, maybe people would think twice about sending their problem horses to the auction houses if they knew that the next step is likely the killer's stun gun.

I think there are a lot of horse folks who have never been to an auction. If you wander the pens beforehand, you don't see many broken down old horses. Most horses sold at auctions are healthy but no one wants them. They are sold to people who ship them to slaughter. I'll bet those who sell horses at auction either don't know or don't care that their horses are likely to end up on a dinner plate.

It's not that I enjoy the idea that horses are used for meat. But the problem is not with the slaughter houses nor the people who buy and ship them, nor the auctions that sell them. The problem is that we make too many horses. The abattoirs are just a solution to the problem by disposing of horses no longer wanted and filling a need in the market!

Put your money where you don't want to see horses part and go to an auction and buy horses at our place now that on dinner plates in Europe had we wife, Nancy, helped 100 horses years as the PMU FoalQuest to a BLM Wild Horse adoption facility and take one home to save it from slaughter.



your mouth is if you slaughtered. Do your a horse. There are 12 would have ended up not saved them. My find homes over 3 representative. Go

Encourage your friends to stop making ordinary horses. Stop backyard breeders from having foals just because they like to have babies around to play with. Unless your mare is a national or world champion, don't breed her! Unless your stallion is a champion, geld him. There are many wonderful horses already here...we don't need any more! Don't breed a mare to "calm her down", get her some more training instead. I know a woman who has 2 ordinary stallions that keep about 20 mares pregnant. The babies she sells don't go for much money. I guess she just likes making horses! It is people like her that should be stopped. It's horses like the ones she breeds that wind up at the slaughter houses. Make each horse wanted and valuable and that will make prices of horses at auction so high that buyers won't be able to afford to buy them for slaughter. Wouldn't that be a nice twist to the problem??!

More Pictures of the Folks and Horses of CTR



Donna Johnson, DVM, and Chair of Chatfield CTR in Conference or stratifying obstacles maybe?

Darryl Dye wins a bet with Joe Quintana at Cavalier CTR briefing on Friday Night. Darling outfit!



Setting up Awards, Pat Montgomery, Chair, and Joe Quintana, Vet Judge, checking their lists at Cavalier CTR.



P & R Team Volunteers holding for 10 minutes of recovery for riders and horses at Cavalier CTR



Vet Judge Joe Quintana checks hydration at Cavalier CTR on Saturday afternoon



Estatic and happy, Vonnie Frane wins the coveted sweepstakes chair at Cavalier CTR



Barn Sales and News Bits

HORSE BOARDING

One block from Indiana Equestrian Ctr
Full Care for one horse, private paddock and
shelter, daily turn-out on irrigated pasture on N.
Arvada home property...call 303-423-6560
Sharron Pizzuto (Denver)

Baylor is for sale! Tennessee Walker
Gelding, 16.2 hands, good confirmation,
solid bay, 7, field trial experienced, sure
footed, good flat walk, rolling walker gaits,
calm, good ground manners, loads, clips
and will stake out. Call Sharron Pizzuto
303-423-6560 or Jack Murphy 918-273-
2693. See his picture below!



Baylor

Wrist Watch
Found at the
Chatfield CTR
on trail by
river.

Contact:
Sue McKelvy
303-838-2890

Bold Princess



Fees collected by Cottonwood Riding Club from
participants in the Chatfield CTR have been
donated to women suffering from breast cancer by
being added to funds raised from a "Ride for the
Cure" event held annually for dressage riders.
Funds were also donated to Kempe Children's
Foundation and the Denver Rotary South East
Foundation.

You are invited to the wedding!
Stephanie Miller

&

David Harding

**Thursday evening, June 24
at Strawberry CTR, Heber City,
UT**

*Come to the Ride and Celebrate
their Union!*

Dress: casual (Tees/jeans)

*G'daughter into boys, car. soccer
No time for her horse and CTR!*

Bold Princess, MFT Mare for Sale!

Sorrel with star, 8, 14.2 hands, CTR
experienced, gaits, unflappable, crosses
water, loads, EZ keeper, excellent feet,
legs & temperament. Great for junior or
woman rider. She can do Open Division!
\$4500 (\$ 500 discount/CTR home)
Call Sue McKelvy 303-
838-2890

838-7920
838-5894

HOME OF
GATED FOXTON HORSEMAN



RESORT VALLEY RANCH
Foxton, Colorado

Tom & Barbara 80433 Thon & Nancy
Butterfield Harris

Wanted! Used Endurance Saddle of size to fit
shorter-backed horse that puts your feet
directly under you and is "close Contact".
Call Susie Witter 719-495-4725
or bfhorsefan@misn.com

From the Suggestion box...look for it at CTR's

1. **Question:** Michelle asks about Reg 3 standards for Safety Riders. **Answer:** Laurie DiNatale has forwarded National Guideline for Safety Riders and keying from them, Region 3 is thinking of having a Safety Chair for each district of our Region. Input to help resolve this issue is welcomed by the BOD.

2. **Question:** An Anasazi competitor in CP wrote: "I feel the CP Division should be your best and most exciting division. I was excited when it was first started as my body may never be "Open". It enabled me to get out of Novice division. CP riders pay the same amount but have much less chance of placing due to no classes such as age or weight in the large numbers of riders in the division as Open and Novice do. I feel this is unfair to CP competitors and that if the division by age and/or weight was added that more riders would participate. She finishes by thanking the Ride Management for Anasazi who worked so hard on the ride. **Answer:** Not certain why no weight or age divisions set for CP but Reg. 3 did give the age criteria a try several years ago. Problem: National does not recognize such divisions within CP so we have to begin at that level. How do the rest of the riders who compete in CP feel about this issue?

3. **Question:** "We need a new regional rule." says Matt Baker, "Only 6 juniper berries allowed in one throw". **Answer:** Well, Matt, you probably know the answer to this one...you are not even allowed to play "ring the bell" unless you wear a helmet!

More Barn Sales & News Bits



Sue McKelvy's new colt

					
	Promotional Products by Shane Tusler...Tee shirts, embroidery, hats, jackets, etc...call Shane or visit his website at 720-206-9111 or www.springspromotionals.com				
					
					

Cavalier Riding Club's NATRC Clinic Report by Judi Tobias

Despite snow, fog and sub-freezing temperatures, 18 hardy riders showed up at Homestead Ranch Park, east of Colorado Springs on April 30 for the Cavalier Trail Riding Club's competitive trail ride clinic. An equally hardy group of volunteers led by Judges Susie Witter and Pat Montgomery worked very hard to present a clinic so packed with information that all riders enjoyed and learned from them. Suggestion for next year's clinic is that it should be held in January since it would probably be warmer!

Ponies, People and Places of CTR



Reg 3's Horse Expo volunteer Booth Bunch:
LouAnn Colby, Priscilla Lindsey and grand
daughter, Bailey, and Sherri Halligan



Reg 3 President Kathy Brown and volunteers
await riders along the trail at Chatfield CTR in
May.



Kris Cummings, Vet Sec at Chatfield CTR
transcribes notes in the rough.



Riders trot
along the
trail at
Chatfield
CTR on
Saturday
morning

Message Board

Susan McKelvy, Editor

After 3 weeks of interrupted sleep for me, my mare, Sensation, finally foaled later than expected but after meeting the colt that resulted, we just think she was putting the "perfect" on him! Right now he's blonde, blue-eyed and leggy with great athletic ability to race around, under and jump trees in the pasture. One of my 3 AM checks had me just missing a face-off with a wandering buffalo bull who came through and left his calling card! I used a flashlight to scan the landscape after that to make the house to barn foal-watch trips!

My first CTR was Cavalier and my hat is off to Pat Montgomery who just about single-handedly found, timed, marked trail and dealt with a frustrating USFS to get the permit for the ride. Too much of the trail involved stepping along the side of Rampart Range Road and it's feeder routes and the local ranger was in attendance both days to insure that riders were single-file and to try to slow traffic. My question to the USFS is: If you were so concerned about our safety on the road, why have us ride there? There were trails available which we could have ridden instead, except that they were not sanctioned and "official"! I found the trails we were able to ride filthy with lots of trash. Maybe NATRC needs to consider a pick-up party there for National Trails Day or later on this summer or fall. Most of the damage to the trails and hillsides were not caused by horses but by 4-wheelers and motorcycles who challenged themselves by driving up the *fall line*.

The ride was well-managed and food was wonderful! The scenery was lovely with spectacular views of Pikes Peak, wildflowers and challenging trails so, despite the road work necessary to complete the ride, plan to go next year if you can! There was, unfortunately, an accident which resulted in one of our riders being air-lifted to a hospital in Colorado Springs. He's fine, but bruised and sore. It occurred at check-out on Saturday evening where horses on lead and their riders were congregated for the judge to check for sore backs and lamenesses (a few of those!). I want to urge riders to be aware of the spacing between themselves (horse included) and others. A horse was startled and kicked out nailing another person in the line in his back. When judges and management ask that you come up just before your number is called or no more than 4-5 riders in line at a time, they mean just that and primarily because of the issue of safety. NATRC prides itself on the safe handling of our horses and defining and maintaining the "Personal Zone" of your horse is important to provide security for him and others.

Consider desensitizing your horse to disturbing stimuli be it dogs or plastic bags. Work on this at home can make him a more stable animal because he's met and realized the demons he thinks will hurt him do not. I always trail ride with 2 dogs while conditioning and my horses while aware of them, don't panic even when they come in from the side of the trail in underbrush therefore, don't bother them either.

A plea to you all to enjoy Strawberry CTR and go early for the wedding if you can. Stephanie Miller has tried hard to make this ride one of the best in the Region and Utah is one beautiful location to ride trails.

Recreational Trails Program Funds

The US Senate passed a \$295 billion highway funding bill, which provides approximately \$270 million for the Recreational Trails Program (RTP) over the next 5 years. The Senate bill provides more overall funding for highway and transit programs, but allocates less money for RTP than the House version of the bill, which was passed on March 3rd.

Differences between the two bills will now have to be worked out by a Conference Committee of both House and Senate representatives. This committee is expected to convene shortly. While the hope is to reconcile the differences between the two bills before the May 31st expiration of the current highway funding, that seems unlikely given the differences in the two bills and the difficult negotiations that will be needed. It is likely another short-term extension, the 7th, will be necessary by June 1.

RTP is important to recreational riders because the program provides funding to build, maintain and improve trails for riders and allows the states to decide where the monies should be spent and what trails need maintenance work.

The Senate version of the bill is particularly important to riders because in addition to the RTP funding, the bill contains a provision specific to the equestrian community. Under current federal transportation law, equestrians are not specifically included in the definition of allowable activities on shared-use transportation paths. Some land managers have used the absence of this recognition to deny access to equestrians, though that was not the intent of the federal law. Section 1607 of the Senate-passed bill specifically adds "Equestrians" to the classes of users that may share such paths for transportation purposes. The AHC (American Horse Council) supports the RTP funding levels in the House legislation and equine-specific language in the Senate bill.

This is your tax dollars at work. This is how the State Trails Grant Program (Colorado) administered by State Parks employees is funded. The South Platte Recreational District won a \$200,000 state grant for trail and trail improvements in the Geneva Basin/Mt. Evans Wilderness (west side) area in 2004-05.

Diana Marquardt writes through the "voice of Sparky", her Morgan gelding, that both she and her CTR horse have had a bit of a rough "go" healthwise and still suffer from residue problems. Diana had hepatitis C and went through a chemo-therapy program 2-3 years ago that has successfully eradicated the virus from her blood but did affect her emotionally which caused her to say things to CTR friends that she regrets. The horse has been diagnosed with a hypothyroid condition which is best treated by diet restrictions and exercise which she gives to him by conditioning and competing in CTRs. He is a full-bodied "old style Morgan" and despite the diet and exercise, he will never be the size of an Arabian horse. She asks her fellow riders to not comment on Sparky's weight when you meet them on the trail but to just say "howdy" as she believes all "Moms" are sensitive about perceived negative comments about their horse children.

Chatfield CTR Ride Results

4/23/05 Region 3 Colorado

B-N/CP: Total riders 60

Chair: Donna Johnson, DVM

Judges: Bethany Grohs, DVM, Susie Witter

Novice Sweepstakes: RS Malbee Bar/ Bart, Elora -98

Novice Heavyweight:

1/3	RS Malbee Bar/Bart, Elora
2/5	Marquessa/Delamont, Kim
3/	GF Centarus/Dietrich, Lois
4/	Gambler/Coalwell, Lisa
5/	Swan's Finale Futurity/Piotraschke, Emily
6/	TTM Bey Javu/Stake, Matt
/1	Royal Thisle/ St. Peter, Diane
/2	Playin In the Shadow/Steele, Diane
/4	Ima Playmate's Doll/Bolesta, Pam
/6	My Desert Storm/Fisher, Linda
	Esport/Cook, Jan
	Katy-girl/Horton, Drew
	Kenlyn Destiny/Rasmussen, Jennifer
	Warrior's Blue Skies/Reinhardt, Nancy
	Sweet Pea/Schnitzler, Deb
	Lawyers Pride/Sinnet, James
HDC	Abilene/MacGregor, Doug
P	John Henry/McCoy, Carol
P	Dare Devil/Rowe, Tony

Competitive Pleasure:

1/	Kokopelli Moon./Peters, Sue
2/2	Ruffian/Korthius, Tracey
3/1	GF Majestic Force/Lane, Roxanne
4/	BHR Hosan China Moon/Heniser, Vicki
5/	LD Dixie Lee/Vasquez, Louise
6/	Post Rock Starry Night, Fredal, Carol
/3	Cappuccino's MinniePearl/Rubenstein, A
/4	Peanut/Baker, Matt
/5	Imagine If/Halligan, Sherri
/6	Squealin John/Holder, Sharon
	Lazy Pine Sundowner R Misty/BeumerR
	Misty Sunrise/Beumer, Carol
	Amigos Pale Face/Gunckel, Kay
	Foxtan Nina/Harris, Thom
	RV Dutch Chocolate/Hoth, Lois
	Flicka's True Image/Montgomery, Pat
	Ezri/Savage, Carol
	Blue Skies Afyre/Scarlett, Tracie

Novice Lightweight

1/4	Babe/Province, Jessee
2/	Mary Mels Cat's Melody/Schultz, C.
3/	Spot's Night Charger/Hummel, Denise
4/	Jake/Boyer, Laurel
	Kenlyn Remarkable/Williams, Wendy
6/3	Nell/Horton, Mary
/1	Aladdin/Beardsly, Cat
/2	Prove It's Pride/Vigil, Amber
/5	Mystery/Woodward, Jesse
/6	French Saber/Massa, Barbara
	Fortunataa/Fisher, Katie
	Mr. Lucas Skywalker/Foster, Cyndi
	Porscha/Kissman, Kimberly
	Jimmy/Nickel, Wendy
	RC Colored Me/Spreier, Cydney
	Sly Dee Skeeter/Willeke, Lanita
P	Kentucky Moonshine/Kanemasu, Sue
P	Delicate Lace/Loyd, Karen
P	Classy/Rowe, Tina

Novice Junior

1/1	Dot/Gunckel, JJ
2/2	Pepsi/Robbins, Kayla
3/4	Egyptian Gem Star/Stults, Morgan
4/3	Tim's Black Cloud/Schultze, Dana

TRAIL NEWS AND UPDATES:

1. Cash-strapped, the US Forest Service can no longer maintain many of its recreational sites including camp grounds and trail heads and will be statistically ranking them for possible future closures. This is due to the Bush Administration's emphasis on "Healthy Forest Initiatives" which diverts funds to thinning trees rather than maintenance of facilities. "It is most likely many forests will have to make tough decisions to close some sites, curtail operations at other locations and decommission some sites in order to define a sustainable program." said Tom Thompson, Deputy Chief, USFS. Some see a darker motive saying that starving the agency of cash forces it to become like a commercial enterprise and keep only the most lucrative locations open to the public.

2. The Land and Water Conservation Fund (LWCF) is in jeopardy as the Bush Administration has proposed "zeroing out" funding for state grants and wants to significantly cut funding for land acquisition of the popular program. LWCF celebrated 40 years in 2004, it has been responsible for the creation and development of more than 40,000 national, state and local parks, trails, forests and recreation areas in all 50 states! Call 1-888-349-5923 to record a message in support of LWCF!

3. Recreational Trail Program (RTF) is a sub-component of SAFETEA (Safe, Accountable, Flexible and Efficient Transportation Equity Act of 2005). It provides funding to build and improve trails for riders and allows states to decide where new trails should be. Some supervisors of public lands have denied equine use of trails due to omission of listing horses as permitted users on some shared-use trails in the program. The Senate version of the funding corrects this but recommends 1/2 the amount of funding proposed by the House of Representatives. American Horse Council supports the RTF funding levels of the House legislation and the equine specific language of the Senate bill.

4. "Right to Ride" Legislation proposed by Senator Crapo of Idaho needs a boost from the equestrian community. This bill permits the "right to ride" of horses and other saddle stock on Federal lands where they have traditionally been ridden in the past. The BackCountry Horseman and the American Horse Council are heavily involved in support of this bill. Please contact your senate and congressional representatives especially those who may be serving on the Senate Energy Committee (go figure that one!) and urge them to vote affirmatively for this legislation.

5. Colorado riders who cross or use lands designated as State Wildlife Areas need to be aware of a proposed \$10 annual fee for a stamp that would permit access and entry. Many trails cross SWA's such as in Evergreen's Elk Management Area which is near trailheads that access the Mt. Evans Wilderness Area. New fees would apply to anyone over 16 years of age. Money raised from fees will be used to preserve habitat, open access for hunting and fishing and pay for easements or leases on adjacent properties. Signage alerting people of the fees will be placed. The idea for a habitat stamp arose 4 years ago when elk and deer hunters requested something be done to preserve and enhance elk and deer habitat especially in western slope areas suffering from pressures of housing developments and oil/gas leases.

6. BLM (Bureau of Land Management) Plan for Headwaters Forests has excluded horses in some regions of the country. This plan is more restrictive than Wilderness Designations of USFS and will limit horse use on many trails now open to equestrians. BLM believes that horses are environmentally damaging to trails and yet, this has not been backed up by scientific studies...it is based on unfounded belief of the destructiveness of horses. Objections are being made because closure of trails and roads leave vast tracts of forest without reasonable access for search and rescue operations. Further, some communities in California are now ticketing horseback riders who fail clean up manure dropped on trails! Where will it end?

Anasazi "A" & "B" Competitive Trail Ride

4/16-17/05 Region Three-N.M.

Chair: Jeff Fink

A- O/CP

Total Riders: 21 Judges: Shannon Leska, DVM,
Kathy Shanor

Op-en Sweepstakes: Shata's Song & Dance/Stevenson, Candy - 97

B - Novice

Total Riders: 16 Judges: Joe Quintana DVM
Judy Cumberworth

Novice Sweepstakes: Emeraldal/Whitman Benedikte - 95

"A"

Open Heavyweight:

- 1/ Shata's Song & Dance/Stevenson, Candy
- 2/ Brazos Blaze/Brown, Jeff
- 3/4 Phantoms Masquerade/Baker, Matt
- 4/ Commander's Easy Goer/ Ward, Jim
- 5/6 BHR Hosan's Polly Anna/Budd, Don
- 6/2 SR Sir Bask/Wolgram, Ken
- /1 Rock'n EZ Ruby T/Smith, Bill
- /3 Rock'n EZ Rainy Knight/Smith, Jenny
- /5 Rock'n EZ Royal T/Ancell, Steve
- Bey Shahtok/Arnold, Marion
- SV Love Sensation/Budd, Kathy
- Big Mac's My My/Gordon, Steve
- Zeus Su Jan/Parish, Milne

Open Lightweight:

- 1/2 Panama Jack/Smith, Terri
- 2/6 All the Rage/Brown, Kathy
- 3/5 Summer/Wolgram, Betty
- 4/3 Remington Steele/Lane, Roxann
- 5/1 Huck's Last Love/Ward, Lin
- 6/4 Cloudsrest Zephyr/Korthuis, Tracey

Competitive Pleasure:

- 1/1 RMR Nahr Amir/Anderson, Carolyn
- 2/2 Independence Dai/Fitzpatrick, Sena
- 3/3 Cedar Mesa Rushai/Mason, Judy
- 4/4 Rock'n EZ Rey/Sims, Jerry
- 5/ Shadowfax/Campana, Mary
- 6/ Sassy/ Sadler, Sarah
- /5 Miss Shamrock Missouri/Jones, Linda
- /6 ceriva Gypsea/Molitor, Loretta
- Life's a Peel/Bishop, Eric
- Cinco De Karome/Bulcock, Debbie
- The Mischief Man/Monroe, Deirdre
- W A Cimatation/Schumack, Laura

"B"

Novice Heavyweight:

- 1/ Emeraldal/Whitman, B.
- 2/ Lawyer's Pride/Sinnett, Jim
- 3/4 Viento Andante Del Alma/
Foutz, Ann
- 4/2 Dee Ramblin Man/Loveless, E.
- 5/5 MT Top Gun/Richardson, C.
- 6/3 Rock'n EZ Reilly/Bingham, K.
- /1 Royal Thistle/St Peter, Diane
- /6 Punk-n-Patch/Saunders, L.
- Winters End/Fiala, Bob
- HDC Que A Who/Cumberworth, B.

Novice Lightweight:

- 1/3 Major Max Princes/Hazelwood
- 2/1 Whitey/Noland, Rebecca
- 3/2 LKA bold Print/LaRue, Susan
- P Jack/Mauney, Jennifer
- P Ebano del Pasado/Pulte, M.
- HDC Bisti Blue/Cumberworth, Tami

Endurance Race Report

Tracie Scarlett

The beauty of an endurance race is that you can "come as you are", show up the morning of the ride for check-in and pay for the privilege at that time. That's exactly what I did Saturday, April 30th at Linda Fisher's Kenlyn Arabian 15-25-50 Endurance Ride in Aurora, Colorado.

The original plan was for Kymberlie and Kathy Shanor to ride two of Linda's horses with Joker and I. The weather had been typical of April in Colorado which means snowy, rainy and windy but Saturday morning, the sun came out and it was a beautiful day!

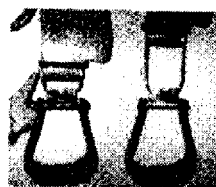
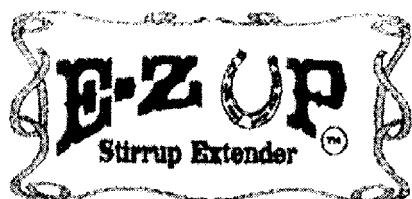
Kymberlie had to get herself ready for prom, so she stayed home and we tried to get the stallion Kathy was riding to go out of his barn away from his mares with no success so Kathy became my "crew". A Crew person is a beloved volunteer who meets the horse and rider at vet-check points during the ride with hay, water, food etc.

So...I started out at a trot and never dreamed I would never walk the entire 25 miles! We slowed to a walk only on a couple steep downhill passages but only because I insisted. I refused to let all of the NATRC training to safely walk down hills go to "pot". So we trotted and cantered the first 15 miles and we were back at camp in 1 1/2 hours! I was sweating like a pig and it took all of 3 minutes for Joker to meet the 60-pulse/minute requirement to start our 1-hour hold time. I got him hay and water, pulled his saddle and presented him to veterinarian for all "A/s".

After the hour's hold, we trotted back out on the trail. A nasty weather front of wind and cold replaced the sunshine of the first part of the ride but I was still perspiring! Out on the plains and after another 10 miles we returned to camp. I was told to come and weigh in if I wanted to compete for "Best in Condition". Kathy helped me unsaddle Joker, blanket him and timed it so we were presenting to the vet within 10 minutes. They did a CRI scoring and he passed. After the other criteria were checked, gut sounds, hydration, etc, we were finished and could tuck the horse in my trailer and leave. I took Joker home for a well-earned rest and gave him plenty of hay groceries as he looked like he might have lost some weight...he did, but I did not probably due to eating lots of food at the rest checks.

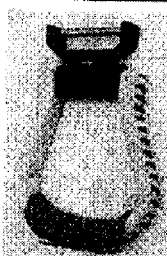
Later that night I called Linda to tell her that I had lost my easy boot out on the trail and she congratulated Joker for winning "best in Condition". I was shocked, and thrilled at the same time. I had no idea Joker could compete at the level of seasoned Endurance horses and I think the reason he did so well is due to the level of conditioning required to compete in NATRC, the training to be calm at P&Rs all of which were necessary ingredients for success in Endurance Racing as well.

"Sometimes there just isn't a stump around"



Normal Extended

Makes your ride more pleasurable by lowering your stirrup 3 inches with the push of the button for easier mounting, then locks back into place with the lift of the toe. **\$89.00 + \$11 S/H**
www.ezupstirrup.com



Rotates 360°
 or Locks into
 Any Position

For 2 1/2
 or
 3" Stirrup

LEGSAVER
 Stirrup Swivels™

Getting comfortable on your horse has never been easier!
 Your stirrup swivels completely allowing you to place your legs in
 the most natural position for you. **\$49.95 + \$8 S/H**
www.leg-saver.com

up pur



\$139.00
 +
\$11 S/H
 Stirrups
 NOT
 Included



LEFT SIDE stirrup to swivel
 360° for a more pleasurable
 ride with less leg and knee strain

Combines the
 technology of
 both products
 Lowers your
 stirrup 3" for
 easier mounting
 plus allows



www.ezuplegsaver.com

Or Call Toll Free 1-877-865-1497