



# the Stirrup

## Region III Newsletter

N January - February 104  
2005

The Region III Newsletter is published bi-monthly. It is available by subscription to non-Region III members for \$10/year.

Display advertising rates:

Full page \$50, half-page \$30, quarter page \$18, business card size \$10.

Classified rates: Members \$5/ad, non-members \$6/ad.

Payments should be sent to:  
Priscilla Lindsey, Treasurer  
P.O. Box 315  
Wray, CO 80758.

Send all letters, articles, advertisements, photos, etc to:

Sue McKelvy, Editor  
P.O. Box 217  
Buffalo Creek, CO 80425

Phone: 303-838-2890  
Fax: 303-838-8481  
E-mail: [sumac@idcomm.com](mailto:sumac@idcomm.com)

\*\*\*  
Deadline for articles, ads, etc.  
25th of Jan, Mar, May, July, Sept,  
and Nov.

Ridin' the Rockies!  
Region 3  
NATRC!



### Region III NATRC Board of Directors:

**Kathy Brown**, President, District 3  
505-776-2575 Natl. Breed, New Members

**Kay Gunckel DVM**, Vice-President  
970-667-2877 District 1, Past President

**Priscilla Lindsey**, Treasurer  
~~303~~-354-7422 At Large, Membership  
970

**Kathy Shanor**, Secretary, District 2  
303-840-9369

<b>Tracie Scarlett</b>	<b>Jim Ward</b>
303-273-9834	719-495-4017
At Large	District 2

<b>Jerry Sims</b>	<b>Lin Ward</b>
505-326-6797	719-783-9645
District 3	At Large

<b>Marc Shanor</b>	<b>Tracey Korthius</b>
303-840-9369	970-613-9455
Past-president, Safety	District 1, Awards

### National Board Representatives:

<b>Doreen Portner</b>	<b>Susie Witter</b>
435-259-6980	719-495-4725

### Committee Chairs:

Tracey Korthuis	- Region III Publicity
Lin and Jim Ward	- National Publicity
Janine Ancell	- Historian

## President's Message

Kathy Brown 505-776-2575

I have been graced with incredible good fortune. I have a great husband and job that allows me the opportunity to own great animals and participate in a great sport. That was plenty, but now I get to serve as your President for 2005! I am honored and excited. I am fairly new to NATRC so I hope you will teach me what I don't know and I hope I can make some fresh contributions.

I have many goals for our Region this year as do my BOD. If I had to pick a theme for the year it would be COMMUNICATION. I think we need to talk to each other much more--this BOD is your BOD--you hired us and we WORK FOR YOU. Let us know what you want for Region 3 in 2005 and beyond. We have many committees and a lot of work to be done, so volunteer for a committee and become part of the solution.

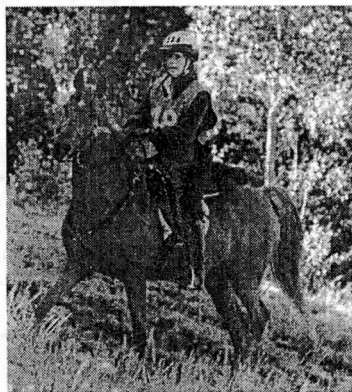
We need to encourage and practice **positive** communication. Gossip and hearsay are destructive. Disagreements with a fellow rider, ride manager, judge, etc. need to be addressed with that person and not everyone but them. Rides don't need to be episodes of "Survivor" and have "someone voted silently out of the region." Beware of "secondary thoughts"--those are the assumptions and embellishments we make after a situation has occurred and have little to do with what actually happened. Such thoughts are inaccurate and spread like wildfire. Let's all try to remember the adage: "If you have nothing good to say, say nothing at all."

We need to communicate to the rest of the equine world so we can share our great sport with other horse lovers. According to *Equus Magazine*, membership in various horse organizations is on the rise, yet we struggle for new members. WHY? We need to find answers to this question.

We need to communicate with our ride managers, new members and safety riders. We need to know how we can support each other and keep our sport and our Region healthy and vital. We need to communicate with the USFS and BLM to preserve the use of our precious trails.

I plan on using our newsletter, website and word of mouth to keep the channels of communication open. You may get tired of me yakking at rides! The new website address is [www.natrc3.org](http://www.natrc3.org). We want to make this the HUB of INFORMATION for Reg 3, including an on-line "chat group". You may receive a questionnaire from the BOD in the future, please complete it and return it. I'll also ask you to help recruit new members which we need to survive!

In conclusion, I want to give a HUGE THANKS to our outgoing board members, Mike Jubb, Jane Young, Sue Peters, Sandy Hollis, Steve Gordon, Olga Spanhoff and past President Marc Shanor. I also thank our current BOD members: Kay Gunckel (2004 President), Tracie Scarlett, Tracey Korthuis, Lin and Jim Ward, Kathy Shanor, Jerry Sims and Priscilla Lindsey--What a great group! Let's not forget our hardworking Nat. BOD members, Susie Witter and Doreen Portner and *Stirrup* editor, Sue McKelvy. Without all these folks and all of you, we would not be where we are today, enjoying this neat sport. We are all responsible for our successes and failures, so lets mount up and head down the trail together--I bet we can make a fine adventure out of it! [equine@newmex.com](mailto:equine@newmex.com)



Kathy & Annie at El Jinete CTR  
photo by Cristy Cumberworth

# Sydney Macy nets 12 mile, 34,000 acre open space for the Front Range of Colorado!

From the Denver Post, Kim McGuire, staff writer

Beyond the strip malls, past the billboards and housing developments so visible to the speeding motorists on I-25, there is a 12 mile respite along the blur of concrete. Welcome to the I-25 Conservation Corridor, a 34,000 acre patchwork of spectacular buttes and sweeping vistas between Castle Rock and Colorado Springs. Because of Sydney Macy, its ponderosa pines will never be logged, never be flattened for another mall. It will exist forever, undeveloped.

"I think the symbolism is that we don't have to accept the inevitability of development," said John Fielder, a noted Colorado scenic and wildlife photographer. "In this state, that's huge!"

Greenland Ranch is part of the corridor and one of the many scenic places in Colorado that Macy, state director of the Conservation Fund since 1994, has helped save during her 30-year career in land preservation. Lawrence Selzer, National President of the Conservation Fund, called Macy "a national treasure" whose work has helped define land conservation in the United States. Some of the key projects she's helped shepherd since returning home to Colorado from California in 1977, include preserving critical water rights in Black Canyon; protecting Phantom Canyon, one of the Front Range's last roadless canyons; and spearheading the initiative behind Great Outdoors Colorado, which uses state lottery proceeds for land conservation.

"People knew what they were against but not necessarily what they were for," Selzer said in describing the environmental movement of the mid-1970's. "Sydney, on the other hand, has always known what she stood for." A 4th generation Coloradan, Macy, 52, was one of John and Diana Shafroth's 6 children who grew up in what is now Cherry Hills Village. A strong land ethic and obligation to public service ran deep in the family: "Honest John" Shafroth, Macy's great-grandfather was known for his refusal to serve in Congress after accusations that the election was tainted by voter fraud. Her brother, Will, director of the Colorado Conservation Trust, was also the first director of Outdoors Colorado. Her brother, Patrick, is an ecologist with the USGS in Ft. Collins. Macy's husband, Tom, is a consultant for the Conservation Fund and worked for the Nature Conservancy.

"In the early days, we would come home, and it was just all the normal stuff. You complain about your boss, how much work we have to do", Sydney Macy said, "but inevitably, we'd start talking about conservation and just have to cut ourselves off!"

Inspired in part by population guru, Paul Ehrlich, Macy started her career in land conservation in California where she worked for a small land trust after graduating from Stanford University. The Rocky Mountain eventually lured her back to Colorado where she joined the Nature Conservancy and was immediately thrust into a difficult land negotiation. For years, the organization had been eyeing a ranch near Colorado Springs but the late owner, Jim Mueller, didn't take kindly to the group's East Coast lawyers negotiating the deal. So the group sent in it's greenist rookie. A couple of whiskey sours later, followed by a 10-hour tour of the property, and Macy had gotten the recalcitrant rancher to sell the land which would become Mueller State Park. "It was tough but really it was a matter of just spending time with him and getting him used to the idea of selling his ranch," Macy said. "He just had a hard time letting go."

Don Elberle granted the Conservation Fund an easement on his land along the I-25 Conservation Corridor, which runs from south of Castle Rock to the El Paso county line. He said Macy has a knack for putting landowners at ease during complicated, protracted negotiations. "Sydney was always a pro," Elberle stated. "She never exuded an attitude that if you don't do this, you're doing the wrong thing."

With the last piece of the I-25 corridor recently acquired...Spruce Mountain, Macy and the Conservation Fund have focused on the Navajo River watershed, a scenic spread of southern Colorado ranchland where the state's last grizzly bear was killed in the 1970's.

"There will be no other place in the state where an entire drainage area will have been protected if they pull this off," said Fielder. "It's really the next big thing in Colorado." Macy concedes it might take years to form a scheme to protect the watershed, but for now, she takes comfort knowing that one of the most visible places, along the well-traveled I-25 corridor, is preserved. "It's just like this little breather from all this chaos we live in. It's amazing what that 12-mile stretch of open space does for you," she said.

# Message Board

Susan McKelvy, Editor

Every four years we witness the Olympic running of the torch and see it passed off between people to be carried across continents and around the world. This year I challenge each NATRC rider to take up a "torch" in the form of an idea, a cause and/or a desired achievement. In this newsletter is an article showcasing a woman's devotion to the cause of conservation of open lands that has resulted in the addition of a state park (with loads of horse and hiking trails called Mueller) and recently acquisition of checkerboard pieces of land stretching between Castle Rock and Colorado Springs, CO which preserves that corridor from development and could in the future provide more trails for riders and hikers. One of the most rewarding aspects of CTR is riding the Terrain and Trails at locations that were or are private property and are now available to CTR riders. What a special privilege that is!

There is no such thing as a "free ride" however, and we should all consider helping construct or repair trails for parks, USFS, BLM and other places by volunteering our time, efforts and money. For some years, Reg 3, NATRC, adopted a section of the Colorado Trail and worked on it over a summer weekend when there were no CTRs scheduled. That responsibility was dropped when we couldn't get enough volunteer workers to come out and help! So stamina and commitment over time is also needed.

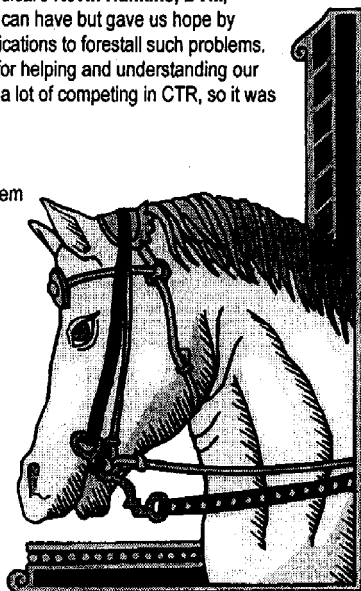
Construction and maintenance of trails is a need in many areas. As we volunteer to help we are identified as people who care and our input will be solicited and our needs considered. Laurie DiNatale attended a National Trails Conference this past fall and reported on some high level talks with USFS, National Parks and BLM that will yield a Memo of Understanding (MOU) which protects trails for horse use. For ride managers who have butted heads with the local offices of USFS or BLM having a "MOU" will help smooth the bumps in executing a CTR. as it acknowledges our right to stage a ride and to use the trails. It also establishes a partnership with the governmental organizations that administer the areas we ride and a part of that covenant is our responsibility to "pay back" and help conserve the lands we love to ride. The question is how do we do that? The answer lies within each of us, collectively!

We all owe a big thank you to **Tracie Scarlett** for her masterful coordination of the Region 3 Seminar in Golden, CO on January 21-22. The speakers were excellent and informative. We also thank them for their presentations. They are **Donna Johnson, DVM** and **Gary Pallaoro, DVM**, who presented a power-point lesson on horse lamenesses and invited the audience to test their abilities viewing videos of horses lungeing circles and trotting straight-aways. **Bill Cumberworth, MD**, who discussed the care and feeding of the riders in CTR. Ft Dodge veterinary pharmaceutical's **Kevin Hankins, DVM**, presented a horrifying discussion of the various diseases horses can have but gave us hope by explaining vaccination schedules and recommendations for medications to forestall such problems. **Marty Martin** held sway during the lunch hour with suggestions for helping and understanding our horses which was informative and fun to hear. Marty used to do a lot of competing in CTR, so it was like "old times" with several of our members present.

Our new BOD officers were elected and installed at the Seminar too. Welcome and congratulations to them all! Please contact them if you have concerns. See the listing inside the front cover of the Stirrup for names and numbers. No one can operate effectively in a vacuum, so let them know what works, what doesn't and best of all your brilliant and creative ideas for improvement of Region 3.

Ride Books are out and coming to you in the mail! We have plenty to share, so contact me if you need some to place in at locations where potential trail riders would pick them up.

Finally, despite the snow and mud, the dirty, shaggy horses that grace my corrals creating lots of grooming exercise, and the mud-slick and icy trails I ride, I take heart knowing that the first CTR is only 2 months away! Hope to see you all sometime on the CTR trail rides this coming season!



## Region 3 Appreciation Award

by Betty Wolgram

This year Region 3 is very proud to recognize two couples who have done so much for our region over the years that even to attempt to describe what they have contributed would fill many pages and take hours to read! If there is a job they haven't volunteered for, it doesn't exist.

The Navajo Lake CTR (New Mexico), which celebrated its 30th anniversary in 2004 as the longest continuous ride in Region 3 and one of the longest running rides in NATRC, was started by Bill and Judy Cumberworth. It is always held on Mother's Day weekend and the Cumberworth's are famous for their goodie-laden Sunday Mother's Day loop on the trail.

Bill has also probably walked the equivalent of earth-to-the-moon mileage marking and laying out new trails, not only for Navajo Lake CTR but for the Anasazi (aka Chokecherry Canyon CTR & Waterboy CTR) as well. Their daughter, Cristy, fondly remembers as a kid riding the back of their station wagon when her mother took the children with her to mark trail in the early spring and being yelled at by Judy to "jump up and down" so they wouldn't get stuck in the mud! Now, "all grown up", Cristy credits her parents for her very successful career as an equine photographer.

"Dr. Bill" has served as ride chair, ride co-chair, secretary, rules interpreter, p&r captain and/or trail master for many years for most of the Four Corner's rides. Judy is a much-beloved horsemanship judge in our region. She has judged for ages and is always willing to step in and help a ride if they are short a judge. Bill Cumberworth is also a past president of NATRC and has the distinction in Region 3 of having so far amassed an amazing 17,000+ worker points, a record that will probably never be broken considering he is still going strong.

This wonderful couple has put on clinics, has trained and helped new ride managers, and has been actively involved in every NATRC ride in the Four Corners area for over thirty years.

Our other honoree couple, Bill and Jenny Smith, symbolizes the same spirit of giving. Everyone in our region knows and loves our "Grand Pooh-Bah" Mr. Bill, two-term Region 3 President and past president of NATRC. He is the founder of "Hug a Judge"! Nowhere in our region can there be found a sweeter smile than that which always graces the face of his lovely wife, Jenny.

For almost 15 years, the Smiths have ridden, as well as helped countless rides in our region and many other regions as well. If ride management needed someone at the last minute to come early and help mark and/or time trails, they could call Bill and Jenny. If there was a need for donations for awards or food at the rides or regional convention, we called on Bill and Jenny. Someone to bring tents so the helper wouldn't fry in the sun or freeze in the rain/snow, again, a call to the Smiths! They always came through with reliable support.

Like so many husband-wife teams in our sport, one spouse usually gets involved first. Janine Ancell, Region 3 horsemanship judge and longtime friend of the Smiths, remembers that Jenny began riding around 1990 when their son, Chuck, was just a baby. Bill stayed in camp cooking for everyone. Then Bill got a horse and soon the whole family was hooked and riding every ride in the region. Quoting Janine, "Bill and Jenny are the only people who can ride 50-60 miles and also cook a full meal for 50-100 hungry trail riders and volunteers."

Bill and Jenny Smith have sponsored the NATRC National Convention and the Championship Challenge, where they were so determined that no one would get lost, that they used over 5,000 ribbons to mark the trail!

Region 3 is proud of, as well as grateful to, these wonderful volunteers. The Cumberworths and the Smiths are devoted partners in life, and we are forever indebted to them that they have also been so devoted to our region's welfare over the years.

*Region 3 Thanks the Smiths and the Cumberworths!*

**We're so proud of you!**

**HELP! SOS! ATTENTION!! HURRY! RUN!! GALLOP!**

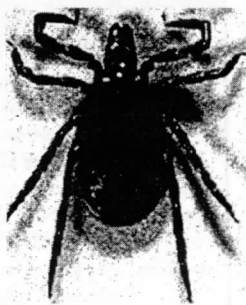
**What's all the fuss about? We need to recruit *New Members* to Region 3. There is a National effort to increase our numbers in NATRC. I am the Chair for Region 3, and I am asking for your help. If you know of anyone who is interested in Competitive Trail Riding, please let me know and I will send them a new member's packet. If all of our members recruited just one person a year we would be in great shape!**

**This year we are introducing an incentive program to recognize current members who recruit new members. There will be prizes available for you when your recruit 2, 4 and 5 new people. The top recruiters will enter a drawing for a Grand Prize! Of course, nothing can replace the fun of sharing our great sport with another, but we want to recognize your efforts!**

**For more information e-mail Kathy Brown at [equine@newmex.com](mailto:equine@newmex.com) or stay tuned--I will be giving updates throughout the year!**

**Come to the NEW Arkansas Traveler R4 Benefit CTR at  
Mack's Pines in Dover, Arkansas**

*Itchin'* to start competing early this year? How about *scratchin'* a circle around the weekend of April 23-24, 2005 and sending in your entry? You'll gorge yourself on mountain beauty and become *full* of the fragrance of spring in the Ozarks. Ride management members are *bloated* with pride that this ride will support the R4 First Time Riders Fund which *drops off* rebates to first time competitors. You can *bite* into A - Open, Novice or CP. We wouldn't *lyme* to you, entries open February 14<sup>th</sup>. Give yourself a Valentine's Day gift and *attach* a \$30 deposit with your entry to: Sherry Murphy, 1167 Sulphur, Damascus, AR 72039, 501-335-7282. Don't mean to *bug* you: A gentle safety reminder - bring bug spray for you and your horse.



**The REAL Arkansas Traveler**

# Barn Sales and News bits

Correction to Ride Book:

**Navajo Lake CTR dates:**

**May 7-8, 2005**

Polish Arab Mare For Sale! Experienced endurance and NATRC trail horse, 13 years, 14.2 H, drinks, travels well, safe but needs experienced rider...\$4500

2 smaller arabs available, perfect for beginners! Would excell at NATRC competitions for \$2000-2500 each.

10% commission paid to person who sends buyer(s). Contact: **Marlene Moss** at 719-351-5037 (cell) 719-748-9073 (home)  
E-mail: [www.mossrockranch.com](http://www.mossrockranch.com)

## **NATRC CLINIC in Boulder!** Information! Tips! Skills!

*Plan to attend a Competitive Trail and Endurance Riding Clinic*

**\*\*\*March 19th 5-8 PM\*\*\***

**Guest Speaker: Kay Guncel DVM**

Location: **Boulder Horse & Rider**  
**4593 N. Broadway**  
**Boulder, CO 80304**

Sponsor: Jill Talbot, Owner

Fee: \$25 (Limited Spaces!)

Call: **303-440-3466** Reserve your place now!

qu

## **Sharon Saare Endurance Saddle**

15SSS, Extra padded seat, endurance stirrups, saddle pad, in great shape! \$1290

## **New Aussie Saddle, Kimberley**

Campdrifter, 16" US size, black, neoprene girth, saddle pad, stirrup covers, adj. tree, never ridden! \$460

Also a 15" Aussie for \$500.

## **Husar English all purpose saddle,**

14" Brown leather, stirrups, leathers, leather girth, fleece girth \$150 English Happy back pad \$25

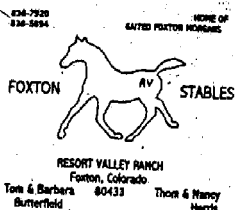
Lovell of Mack **rump cover**, teal, used once \$35

Kris Cummings 303-838-6589

[ciex@mho.com](mailto:ciex@mho.com)

City/County of Denver SalesTax Guide:

"Sales and purchases of horses are taxable unless they can be used for breeding purposes, or unless they are purchased for resale! Geldings and mules are considered taxable...as they are not breeding stock."



**We're looking for  
Safety Riders!!!**



Volunteer to do one CTR as a Safety Rider and get **free training** in CPR and First Aid compliments of NATRC Region 3! Total time dedicated...only 3 days total including training! No judges, no hassles!

Contact **Linell Miller** 303-200-0279 or **Diana Marquardt** 970-887-2450

to sign up for this wonderful opportunity. Safety Riding is relaxing for both you and your horse and the rewards are many including a free lunch!

## Region 3's Committees

Contact the chair person listed to volunteer and know that we would love your skills and input!

Juniors: Kay Gunckel

Mentors: Lin Ward, Jerry Sims

Historian: Janine Ancell

New members: Kathy Brown

Safety Coord: Diana

Marquardt

Newsletter: Sue McKelvy

Ride Book: Sue McKelvy &

Kathy Shanor

Supplies: Dee Overholt

Awrds: Tracey Korthuis

Horseman's Expo: Linell Miller

Publicity: Jim & Lin Ward

Reg. 3 Ride coord: Kathy Shanor

**Reg. Trail advocate: OPEN**

Reg 3 Website: Jeff Brown \ Tracie Scarlett

By-Laws: Kathy Brown, Kay Gunckel

Nat. Convent: Kathy Shanor Donna Johnson

Reg 3 Convent: Terri Smith

Ride Mgr Recog: Doreen Portner

Nat. BOD Updates: Susie Witter,

Doreen

Portner

Budget: Priscilla Lindsey & Kathy Brown



**Hooray for Terri Roberts Smith and Panama Jack**  
Winners of Region 3's Ruth Tyree High Average Horsemanship Award and the Ken Burkdoll Combined High Average Horse/Rider Award for 2004!



**Bad Horsie!** Terri suggested showing that even a major award-winning horse has his "moments". She said Panama Jack ran away after leaping the log he was supposed to step over! The cure for such behavior.. more work!

**Thanks and Congratulations to**

**Lonnie Smith, winner of the Sue Bretag Service Award**



## Region 3's Committees

Contact the chair person listed to volunteer and know that we would love your skills and input!

Juniors: Kay Gunckel

Mentors: Lin Ward, Jerry Sims

Historian: Janine Ancell

New members: Kathy Brown

Safety Coord: Diana

Marquardt

Newsletter: Sue McKelvy

Ride Book: Sue McKelvy &

Kathy Shanor

Supplies: Dee Overholt

Awrds: Tracey Korthuis

Horseman's Expo: Linell Miller

Publicity: Jim & Lin Ward

Reg. 3 Ride coord: Kathy Shanor

**Reg. Trail advocate: OPEN**

Reg 3 Website: Jeff Brown \ Tracie Scarlett

By-Laws: Kathy Brown, Kay Gunckel

Nat. Convent: Kathy Shanor

Donna Johnson

Reg 3 Convent: Terri Smith

Ride Mgr Recog: Doreen Portner

Nat. BOD Updates: Susie

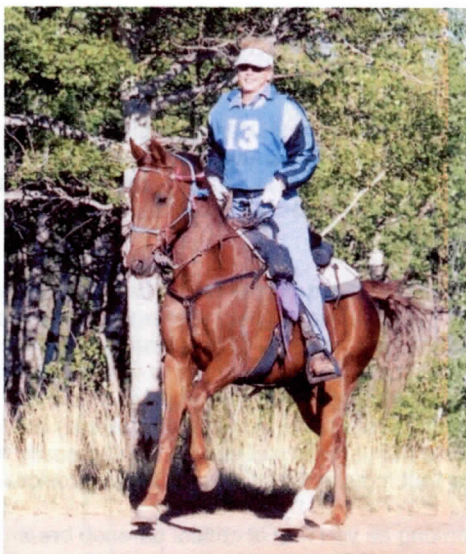
Witter,

Doreen

Portner

Budget: Priscilla Lindsey &

Kathy Brown



**Hooray for Terri Roberts Smith and Panama Jack**  
Winners of Region 3's Ruth Tyree High Average Horsemanship Award and the Ken Burkdoll Combined High Average Horse/Rider Award for 2004!



Bad Horseie! Terri suggested showing that even a major award-winning horse has his "moments". She said Panama Jack ran away after leaping the log he was supposed to step over! The cure for such behavior.. more work!

Thanks and Congratulations to

**Lonnie Smith, winner of the Sue Bretag Service Award**

## "Riders need to take care of themselves!"

By Bill Cumberworth, MD

Four things are important to maintain a rider in the saddle; food, water, minerals and temperature regulation. Riders should start out a competitive ride in a healthy state and strive to maintain that good health. Riders burn 400-500 calories/hour riding at a trot and 250-300 calories/hour riding at a walk.

A low carb diet may not be the best idea as carbohydrates are an immediate form of energy and riders are urged to eat them in the mornings before they time out and to carry "booster carbs" with them for snacks and lunch. Proteins and fats take longer to convert to energy. Riders who don't pay attention to the foods they need to intake can suffer from hypoglycemia which causes them to feel weak, sweaty and confused. The problem can mimic dehydration but can be treated easily with intake of simple starches like fruit, crackers and peanut butter or juices.

Drinking as you ride is critical as each breath a rider breathes in and out aspirates 100% humidity (pure water) no matter what the humidity of the air of their surroundings! Perspiration is also water we lose over time but contains vital minerals such as sodium and potassium which can be replaced by eating fruits and drinking electrolytes (sports drinks). Loss of calcium can cause muscle cramps and spasms...or tying up of the rider! Treat this with dairy products like yogurt, cheese or milk or chewing calcium-rich antacids like Tums.

Dressing for the climates likely to be encountered is a smart idea. Temperature and dehydration can cause hyperthermia which is not just uncomfortable but can be a true emergency and life-threatening if a rider's core temperature climbs above 103 degrees. Use bandanas, long-sleeved shirts, hats or helmets, slather on sun protective screens on any exposed skin, and consider wearing gloves.

The opposite problem of Hypothermia demands that riders dress in layers, again with hat or helmet, gloves and stay dry (rain gear). Frostbite on your extremities or if your nose and ears go numb might mean quitting the trail and seeking shelter and warmth to correct the problem. Despite being cold, drink as the hydration is important to combat mental fatigue.

Clothing choices are individual but should be comfortable and not a binding fit. Carry matches or a lighter, a cell phone (even if it doesn't always work in all locations in which you ride), keep a knife on you not your saddle, and know where you are! GPS can be handy in determining locations and if in unfamiliar territory carry a map and compass. Rain gear is always wise to pack even on a sunny day...weather can change...quickly...and waterproof covering can not only protect you from rain and snow, but is a wind-break.

Troubles can happen so first aid for an injured rider is simple, if the rider can't feel or move his arms and legs, don't move him, but cover him to keep him warm and combat shock. A broken leg or arm demands that you try to stabilize the limb but the rider can be moved. CPR can restart a heart stopped by a lightening strike and aspirin can help if a heart attack occurs.

# NATRC MEMBERSHIP - 2004

NATRC offers six membership plans (check plan desired):

- ☐ FAMILY membership.....\$60.00 per year Household of 1 or 2 adults and children under the age of 18 as of Jan. 1 (two votes)
- ☐ ADULT membership.....\$50.00 per year Single adult member (one vote)
- ☐ JUNIOR membership.....\$35.00 per year Single Junior member under age 18 (no vote)
- ☐ ASSOCIATE membership.....\$50.00 per year Equine-related groups or businesses only (no vote)
- ☐ SINGLE LIFETIME membership.....\$600.00 Any person of any age (one vote)
- ☐ FAMILY LIFETIME membership.....\$800.00 Husband and/or wife at the time membership is obtained and children under the age of 18 as of Jan. 1 (two votes)

All NATRC memberships include: Rule Book (upon request), newsletter, eligibility to compete for NATRC annual high score awards and championships, rider and horse mileage awards, and reduced ride entry fees. New members also get a club patch.

NOTE: All membership fees include both national and regional dues - when you join NATRC you are automatically a member of your respective region. Memberships run from January 1, 2004-December 31, 2004.

PLEASE LIST ALL FAMILY MEMBERS:

Name(s) \_\_\_\_\_

Street \_\_\_\_\_ City, State, Zip \_\_\_\_\_

Phone (\_\_\_\_\_) \_\_\_\_\_ Birthdates of Junior(s) \_\_\_\_\_ \$ enclosed \_\_\_\_\_

## NATRC Specialties\*

- ☐ Patch (inc w/ membership) .....\$1.75
- ☐ 10" Decal .....\$2.00
- ☐ 4" Decal .....\$1.00

\*All prices subject to change without notice. Manuals available to members and non-members

## NATRC Manuals\*

- ☐ Rule Book (inc w/ membership) .....\$2.00
- ☐ Judges' Manual .....\$5.00
- ☐ Guide to CTR .....\$4.00
- ☐ Management Manual .....\$4.00 (plus \$2.50 per manual)

## NATRC Video

- ☐ NATRC Introduction Video .....\$8.95

☐ NEW NATRC RIDER'S MANUAL \$18 inc. p&h

NATRC: 303/688-1677 Phone 303/688-3022 Fax

natrc@natrc.org

Make checks payable to NATRC (U.S. funds only) and mail to:

NATRC, P.O. Box 224, Sedalia, CO 80135

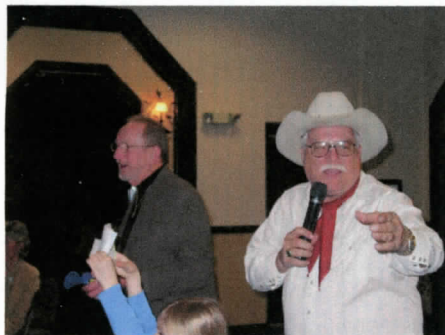
Contributions to NATRC are tax deductible. If you wish to show your added support by contributing to the NATRC Foundation Awards, Student Loan, or General Funds, please increase the amount of your payment and direct how you wish it to be used

☐ \$10 ☐ \$25 ☐ Other

How did you learn about NATRC?

Former membership information

# Pix of Ponies, People and Places of CTR!



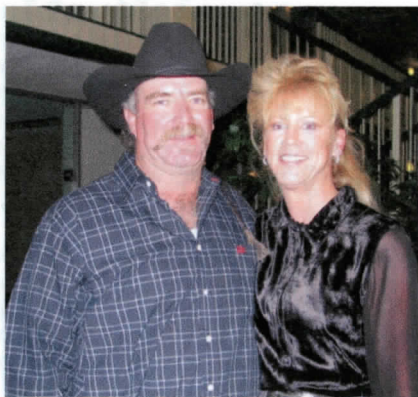
Jim Ward and Steve Lindsey team up to auction vests, premier parking spaces and ride entries to the Awards Dinner crowd! Over \$3200 was raised!



Judy and Bill Cumberworth, Region 3's Appreciation Award Winners for 2004!



Judy Wise Mason is all smiles and tears of joy at receiving the Lifetime Achievement award for her wonderful horse, Brown R Dawud (aka "Woody") from NATRC.



Region 3's Ken Burkdoll and Ruth Tyree award winning rider, Terri Roberts Smith and her husband, Lonnie, recipient of Sue Bretag Service Award for 2004.



With festive vests and goofy grins, your new Region 3 Board of Directors show off their "Districts" vests at the Reg. 3 Seminar, Golden, CO on Jan. 22, 2005

# Region 3's High Point Year-End Awards

**Novice Junior Horsemanship:** No Rider rode in 2 rides.

## Novice Lightweight Horsemanship:

- 6th Wendy Brooks (34)
- 5th Mary Pulte (38)
- 5th Cindy Meyer (38)

## Horsemanship:

- 4th Jan Adams (40)
- 3rd Louise Vasquez (42)
- 2nd Beth Sims (58)
- 1st Vicki Heniser (81)

## Novice Heavy Horsemanship:

- 6th Sherri Halligan (42)
- 5th Leslie Lingle (48)

## Horsemanship:

- 4th Karen Belcheff (56)
- 3rd Roger Beumer (58)
- 2nd Jerry Sims (64)
- 1st James Sinnett (70)

## Competitive Pleasure Horsemanship:

- 6th Kay Gunkel (46)
- 5th Cindy Harder (52)
- 4thCarolynn Anderson (58)
- 3rd Kathy Brown (72)
- 2nd Mike Jubb (74)
- 1st Susan Peters (123)

## Open Junior Horsemanship:

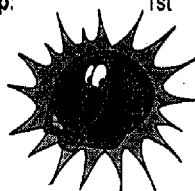
- 1st Kymberlie Shanor (48)

## Open Lightweight

- 6th Lin Ward (62)
- 5th Kathy Shanor (64)
- 4th Tracie Korthuis (70)
- 3rd Tracie Scarlett (74)
- 2nd Judy Mason (84)
- 1st Terri Smith (128)

## Open Heavyweight

- 6th Steve Gordon (54)
- 5th Ken Wolgram (56)
- 4th Darrel Dye (62)
- 3rd Jim Ward (78)
- 2nd Jeff Brown (81)
- 1st Matt Baker (96)



*We're proud of all of you!*

## Region 3 Rider Mileage Year-End Awards for 2004

Deb Crooks	250 (260)	Darrel Dye	1500 (1840)
Gina Levesque	250 (260)	Gary Inman	1500 (1580)
Cathy Moore	250 (420)	Susan Peters	1500 (1540)
Beth Sims	250 (400)	Laura Schumack	1500 (1640)
Jerry Sims	250 (440)	Laurie DiNatale	1500 (1520)
Leona Arnett	250	Carol Beumer	2000 (2200)
Jan Adams	500 (500)	Steve Gordon	2000 (2080)
Sherri Halligan	500 (560)	Sandy Hollis	2000 (2040)
Cindy Harder	500 (600)	Linell Miller	2000 (2090)
Stace Moss	500 (540)	Tracie Scarlett	2000 (2050)
Jasmine Snyder	500 (500)	Jeri Williams	2000 (2010)
Heather West	500 (610)	Roxann Lane	3000 (3010)
Terry Yates	500 (540)	Dee Overholt	3000 (3070)
Kathy Brown	1000 (1290)	Kymberlie Shanor	3000 (3030)
Rick Harper	1000 (1060)	Ken Wolgram	3500 (3540)
Jim Ward	1000 (1240)	Matt Baker	5500 (5510)
Lin Ward	1000 (1100)	Kathy Budd	5500 (5570)
Jeff Brown	1500 (1750)	Milne Parish	6500 (6720)
Laurie DiNatale	1500 (1520)	Terri Smith	7000 (7400)
		Judy Mason	7500 (7670)

## Region 3 Board of Directors Meeting Jan. 21, 2005

Meeting was called to order by President Kay Gunckel.

Several resignations have occurred which required 3 slots on the BOD to be filled. **New BOD members** replacing Steve Gordon, Sandra Hollis, and Olga Spanhoff are Kathy Shanor, Jim Ward and Jerry Sims. We welcome them!

**Secretary's Minutes** were approved as e-mailed to BOD after the last meeting. Secretary was advised to summarize discussions, note responsible parties to motions and note due dates of approved actions. Actions must be in the form of an approved motion and not an agreed upon discussion! Tape recording BOD sessions was suggested as it would record and could be later transcribed. Mike Mason agreed to purchase a new recorder with input from the secretary.

**Treasurer's Report** by Priscilla Lindsey, revealed that Reg 3 has been spending more than it takes in for the past 3 years. Biggest expenditures are awards, ride books and newsletter, travel reimbursements for our Nat. BOD directors, and Ride Start-up Funds (which are ultimately repayable). A budgeting process will take place at future BOD meetings. We overspent \$3708 this past year. We are not broke! We have \$888 in checking, \$910 in Ruth Tyree A/C, \$1047 in Ken Burkdoll A/C, \$6140 in Savings, and \$5481 in Sue Bretag A/C. Mark Shanor offered to conduct a review of the Region's books. Rider fees have been increased from \$3 to \$4 for members. Not all rides in 2004 have paid the fees yet. Navajo Lake, 04 Benefit Ride, provided \$903 income.

### Old Business:

1. **Safety Riders** - Diana Marquardt presented her argument for a cadre of 20 riders who would commit to safety riding 2 rides a season and who would be trained in CPR and First Aid. Costs of training would be only for Red Cross fees and books, about \$20. BOD voted to pick up this expense if Diana and her committee (Linell Miller and Susan Peters) can build a list of riders interested. They will report back on progress of this proposal at the next meeting. Christina Mott, certified Red Cross instructor, will instruct the class free of charge.

2. **Ride P.A. System and radio** communication gear will be moved to the rides by Mike and Judy Mason.

3. Jeff Brown reported on the **Region 3 Website**, [www.NATRC3.org](http://www.NATRC3.org). Cost is \$37/year. He had his laptop set up at the Hospitality Room at Seminar for members to try. BOD hopes this will be used for Region 3 communications, info, etc. Expense of Website was approved, and Jeff was thanked for his work.

4. **By-Laws Revision** is due...last one was 1977! Copies were provided for BOD members to review and work on at upcoming meetings this year.

5. Vest Auction rules were set and additional fund-raising efforts were approved. Along with the vests, members can bid on Premier Trailer Parking Places at Rides and on donated Ride entries. Vests can be purchased after the Seminar Auction for \$50/per in all divisions.

6. National Awards Donation was upped from \$300 to \$500 to help NATRC make up the shortfall with the loss of Sundowner as an advertiser/supplier.

7. Start-up Money for Ride Management was discussed and clarified. Ride Managements can ask for \$500 loan to cover unexpected expenses, get things rolling, etc. Susie Witter, Priscilla Lindsey and Kathy Shanor will comprise a committee who will look into this program and report back to the BOD.

8. Clinics scheduled this year are Jill Talbot's non-horse clinic at her store in Boulder (see ad in this newsletter) and Judy Mason's clinic with horses...date not yet set!

9. Ride Books: Sue McKelvy reported that she had 2000 printed for \$1870. Discussion on the number and expense for the future will be explored by Jim Ward and a committee. Decision made to charge \$1/book at the Horse Expo in March, 2005. BOD reminded that Sue Bretag A/C was intended for advertising. Ads in shopper mags and other horse-related publications also recommended to broadcast the message about NATRC.

#### **New Business:**

1. **Elections:** President - Kathy Brown, Taos, NM  
Vice-president - Kay Gunckel, DVM, Loveland, CO  
Secretary - Kathy Shanor, Parker, CO (with Mark's assistance!)  
Treasurer - Priscilla Lindsey, Wray, CO

#### **2. Committee assignments:**

Awards - Tracie Scarlett and Tracey Korthius  
Horse Expo - Linell Miller  
Trail Advocacy - Open!  
Regional Convention - Terri Smith, Farmington, NM  
Juniors - Kay Gunckel  
Mentor - Lin Ward and Jerry Sims  
Historian - Janine Ancell  
Membership - Kathy Brown, Jim Ward  
Newsletter/Ride Book - Susan McKelvy  
Safety - Diana Marquardt  
Supplies - Dee Overholt  
Publicity/Advertising - Jim Ward and Kathy Brown

3. Horseman's Expo, March 2005, money was authorized by BOD to cover expenses for booth and membership in COHOCO with a generous \$100 gift from Jim and Lin Ward.

4. Awards for Region restocked and expenditure approved by BOD.

5. **Next Meeting:** Jim and Lin Ward on **April 2nd at 10 AM**  
200 County Rd. 326  
Westcliffe, CO 81252      Lunch Provided!

Meeting was adjourned.



Susie Witter chaired a lively exchange of ideas, complaints and information regarding the trials and tribulations of Ride Managers on Friday evening of the Region 3 Seminar. Discussions centered on issues of "no shows", "wait listed riders", food and award expenses, problems of procuring judges and the costs associated with bringing them to a ride, in-state and out-of-state judges - the healthy mix, ride entry pricing, and paying for losses if a ride doesn't fill adequately or has unforeseen expenses.

The pitfalls and problems of the Ride Start-up Money presented a problem as managers did not know who had the responsibility to repay the \$500 loan, the Ride or the managers at the time the loan was made. Clarification will have to come from the BOD. The BOD expects that Ride managements needing the \$500 will repay the loan the following year if the ride is profitable. The possibility of other funding sources for the Start-up money was discussed.

A Benefit Ride for Region 3 is still needed. Ride Managers not in attendance are asked to consider volunteering for this honor and contacting BOD president Kathy Brown if they can do it. Beginning or first-time rides should not try to be the benefit ride too.

Cost containment and budgeting processes are very necessary for managers to do. Food seems to be a big expense. Managers should try to have it prepared and served by people who will not charge too much. It can also be a great fund-raiser if supplies are donated and meals sold to riders yield additional profit for the ride. Riders seem to appreciate not having to cook after all day in the saddle. Pot lucks and shared dish meals can foster camaraderie and ease the burden of expenses for management.

Mentors for managers is a good idea. Experienced managers-on-call can help with time-lines and deadlines to be met and management of expenses so that rider's deposits of entry fees can be used to their best advantage. Ride managers need to request help if it is needed!

Jim Ward spoke out about raising the cost of entry fees, stating our sport is one of the cheapest horse sports in the USA! Managers present would love to see this happen but many expressed concern that fuel costs to get to and from rides have escalated big time and most of all they just want to fill the rides so their efforts are rewarded.

Dealing with USFS, BLM and other state, local or Federal governmental agencies revealed a lot of frustration for Ride Managers. Doreen Portner and Laurie DiNatale reported on talks on-going with USFS regarding a Memo of Understanding (MOU) which is being drafted in Washington, DC. The MOU should help grease the negotiations with the government but seems not to address the problematic issue of local superintendents who may not like seeing horses and riders in their domains. Once the MOU is agreed upon, copies should be given to all ride managers and shown to governmental agents they have to deal with and it is hoped it will help!

No-Show Riders are asked to notify management as soon as they know they can't come so others can be placed in the ride. Refunding deposits is at management's discretion. Raising the amount necessary for securing a ride entry was discussed, its refundability was also a topic of discussion. Changes and ideas coming from this meeting may be seen in next season's Ride Book!

Best suggestion: Support and Help your Ride managers as theirs is the BIG RESPONSIBILITY!



# Region 3's High Point Year End Awards

**Novice Junior Horse:** 1st Pralines N Cream JJ Gunckel (Points not avail.)

## **Novice Lightweight Horse:**

6th	Shadow's Friday	Cindy Meyer (30)
5th	Samson'd Diamond Lil	Vonnie Frane (32)
4th	RHA Khnight Rebel	Jan Adams (34)
3rd	Bonanza's Rebel G	Beth Sims (48)
2nd	Rosabella De Carmin	Mary Pulte (56)
1st	BHR Hi Boy's Echo	Vicki Heniser (65)

## **Novice Heavyweight Horse:**

6th	All the Buzz	James Sinnett (30)
5th	Dennis the Menace	Pat Wilson (34)
4th	Rock'n Easy Ray	Jerry Sims (36)
3rd	Eladin's Promise	Cindi Rowe (38)
2nd	R Little Miss Mack	Leslie Lingle (46)
1st	Quierro	Karen Belcheff (76)

## **Competitive Pleasure Horse:**

6th	Rock'n EZ Royal Tee	Steve Ancell (32)
6th	Post Rock Starry Night	Carol Fredal (32)
5th	Gunslinger T	Mike Jubb (46)
4th	Becky C	Sandra Hollis (48)
3rd	All the Rage	Kathy Brown (70)
2nd	Kokopelli Moon	Susan Peters (93)
1st	RMR Nahr Amir	Carolynn Anderson (112)

**Open Junior Horse:** 1st Fortunataa Kymberlie Shanor(60)

## **Open Lightweight Horse:**

6th	Huck's Last Love	Lin Ward (54)
5th	Summer	Betty Wolgram (54)
4th	MKS Shamal Nejma	Kathy Shanor (68)
3rd	GF Jokers Are Wild	Tracie Scarlett (73)
2nd	Brown-R Dawud	Judy Mason (106)
1st	Panama Jack	Terri Smith (142)

## **Open Heavyweight:**

6th	BHR Hosan's Polly Anna	Don Budd (46)
5th	Big Mac's My My	Steve Gordon (50)
4th	Sky	Darrell Dye (64)
3rd	Rocky Top II	Jim Ward (76)
2nd	Phantom's Masquerade	Matt Baker (87)
1st	Brazos Blaze	Jeff Brown (93)

***Congratulations to all these Region 3 Winners!!***



# Region 3's Year-End Horse Mileage Awards

## 250 Miles:

Rock'n EZ Royal Tee  
Tamigo Khonibb  
Pearl  
Gunslinger T  
Charm's Royal Touch  
Royal Sensation A  
All the Rage  
Zeus Sujan  
SR Sir Bask  
Dennis the Menace

Steve Ancell (260)  
Leona Arnett (280)  
Wendy Brooks (360)  
Mike Jubb (420)  
Dee Overholt (420)  
Jon Tanner (280)  
Kathy Brown (330)  
Milne Parish (420)  
Ken Wolgram (320)  
Pat Wilson (250)

*What Great Horses We Ride!!!*

## 500 Miles:

Knight Rebel  
RMR Nahr Amir  
Misty Sunrise  
Samson's Diamond Lil  
Dichoso  
Johnny Danger  
Kokopelli Moon  
GS Jokers Are Wild  
Fortunataa  
Raven's Shadoc  
Sea Hello Dolly

Jan Adams (540)  
Carolynn Anderson (580)  
Carol Beumer (520)  
Vnnie Frane (520)  
Cindy Harder (600)  
Linell Miller (750)  
Susan Peters (660)  
Tracie Scarlett (870)  
Shanor/Fisher (630)  
Olga Spanhoff (600)  
Heather West (570)

## 1000 Miles:

Becky C  
Touch's Yeller Gold  
Panama Jack  
WSA Desert Wind  
Rocky Top II

Sandra Hollis (1000)  
Gary Inman (1200)  
Terri Smith (1380)  
Audrey Taylor (1020)  
Jim Ward (1280)

## 1500 Miles:

Phantom's Masquerade  
Brazos Blaze  
BHR Hosan's Polly Anna

Matt Baker (1630)  
Jeff Brown (1750)  
Don Budd (1520)

## 2000 Miles:

Sky  
Sierra Blue  
Remington Steele  
Rock'n EZ Ruby

Darrel Dye (2020)  
Donna Johnson (2020)  
Roxann Lane (2050)  
Jenny Smith (2030)

## 2500 Miles:

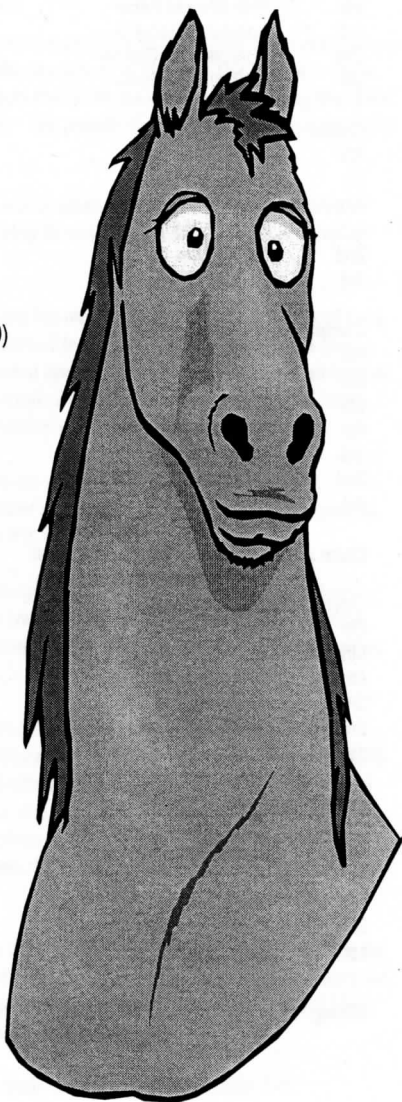
Egyptian Gem Star  
Cliffwood's Hakime

Shanor's (2510)  
Jubb's (2520)

## 5000 Miles:

Brown R Dawud

Judy Mason (5190)



Reg 3's Nat. Appreciation Award:

**BILL & JUDY CUMBERWORTH  
BILL & JENNY SMITH**

March is **TUCKER** saddle sale month!!

\*\*\*\*\*

Story-Teller's Night: **Charlie Cox**, former jockey who  
raced with Willy Shoemaker, knew Seabiscuit! Feb 26th  
5-7 PM at the **Boulder Horse & Rider**

Need JEANS?  
Need a Cool COWBOY HAT?  
Or WESTERN BOOTS?

ROPE YOURSELF A DEAL AT

**BOULDER HORSE & RIDER**



**EQUINE SUPPLIES - FEED - GIFTS  
TACK & WESTERN APPAREL**

**4593 N. Broadway #A-200  
Boulder, Colorado 80304**

**303-440-3466**

Mon-Fri 10-6 • Sat 9-5

Also at • Wrangler • Shady Brady Hats • Local Western Art • Natural Dog/Cat Food



Owner: Region 3's *Jill Talbot*