

# Region 3

SEPTEMBER/OCTOBER • 1997

## This year's Championship Challenge lives up to its name

**All the riders agreed that the '97 Challenge, held at the U.S. Air Force Academy, was a true test of the best horses and riders in NATRC.**

The trails - all of which had been used for the Cavalier ride in June- were marked, groomed and timed to perfection. The riders were at the check points within 5 to 10 minutes of the projected times. Pre-riders made sure ribbons were prolific and well-placed.

The judging was top-notch. Nancy Loving and Stephanie Ostrowski as vet judges, and Kathy Morris and David Shannon in horsemanship, provided obstacles that were imaginative and appropriate - yet fun - for the riders. Nancy Loving's "field of dreams" had Sylvia Beverly exclaiming, "I want to do it again!" Nancy even got on a horse to demonstrate how to do a turn on the haunches at the Saturday evening briefing.

A highlight for the riders and workers was the food. With gourmet rolls provided at breakfast by Marigold's Cafe, and Bill Smith's sumptuous dinners topped off by desserts by Mary Ellen Keckler (those cheesecakes were to die for!)

and Carol Fredal, everyone agreed that this was one ride where they would actually gain weight!

The San Juan Valley Trail Riders' tent was much appreciated as the camp endured a couple of thunder-

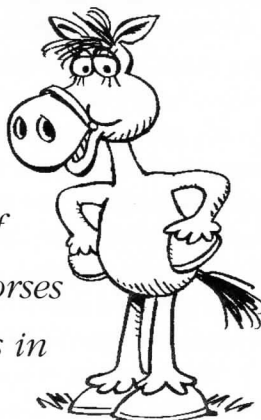
storms (this *is* Colorado, after all!).

The crowning touch was the champagne served to each rider by NATRC Executive Administrator Laurie Butterfield and *Hoof Print* editor Ruth Bourgeois as they crossed



**Happy campers** one and all at the Championship Challenge ride. From left: Judi Tobias, ride manager; Irene Catlin (from Region 5 - Tenn.), judge's secretary; Ike Mosgrove, driver; and Dee Overholt, also a judge's secretary.

*It was a true test of the best horses and riders in NATRC!*



the finish line. And then the awards - featuring a new traveling trophy for the Champion Horse - donated by the San Juan Valley Trail Riders, and a lovely custom belt buckle to the high point combination horse and rider, donated by Judy Benham. The winner of these great prizes was Harca, a purebred Arabian gelding, ridden by Sylvia Beverly of Solvang, Calif. - Judi Tobias

*Challenge results on page 4.*

# Region 3

The *Region 3 Newsletter* is published bi-monthly. It is available by subscription to non-Region 3 members for \$8 per year. Requests/payment for subscriptions should be sent to Iris Mosgrove, 10590 Egerton Road, Colorado Springs, CO 80908.

**1997 deadline/distribution:** Jan./Feb. deadline Jan. 15, dist. by Jan. 30; Mar./Apr. deadline Mar. 15, dist. by Mar. 30; May/Jun. deadline May. 15, dist. by May 30; Jul./Aug. deadline Jul. 15, dist. by Jul. 30; Sep./Oct. deadline Sep. 15, dist. by Sep. 30; and Nov./Dec. deadline Nov. 15, dist. by Nov. 30.

Display advertising rates: Full page (7 1/2" x 9 7/8"), \$50; half-page (7 1/2" x 4 15/16"), \$30; quarter-page (3 3/4" x 4 15/16"), \$15; eighth-page or business card (2 1/2" x 3 1/4" or 3 3/4" x 2 7/16"), \$10. Ad rates are per issue and must be camera-ready. Ads placed for five consecutive issues run a sixth time free. Pre-printed full-page flyers that are ready for insertion, are \$35 per issue. Barn Sale unclassified rates: Members: \$5 per ad, non-members: \$6 per ad.

Send all letters, articles, photos, etc. to: Lisa Sowell, 8150 West 111th Ave., Broomfield, CO 80021, (303) 465-3621.

## 1997 Board of Directors

Bill Smith (505) 334-6275	President & At Large
Lonnie Smith (505) 334-2001	Vice Pres. & At Large
Betty Wolgram (970) 824-8359	Secretary & D-3
Ike Mosgrove (719) 495-2906	Treasurer & D-2
Susan Benjamin (970) 242-1548	D-3
Carol Beumer (970) 824-9204	At Large
Dan Fredal (719) 481-3071	At Large (rep. D-1)
Larry Keckler (719) 687-2558	At Large (rep. D-1)
Bonnie Olson (719) 495-9623	D-2
Karen Laden (719) 495-3892	Past President
Judi Tobias (719) 593-7310	Nat'l. Board
Joe Quintana, DVM (505) 325-8829	Nat'l. Board

# Come to Taos!

## Region 3 seminar information

**We did Taos 15 years ago, let's do it again!** Seminar date, January 17, 1998 in Taos, New Mexico, at the Sagebrush Hotel – a great old southwestern hotel. Wonderful art and ambiance. Always the best country and western bands in the area featured in the lounge with a big dance floor... so bring your dancing shoes. Rates at Sagebrush will be \$60.00 for a single room, \$70.00 double. Additional guests in rooms will be charged only \$5.00 each.



A full breakfast is included with your room. All of the fireplace rooms are blocked for us on Fri. 16th and Sat. 17th, so ask for a fireplace room if you wish when you make your reservations.

Reservations must be made by Dec. 16th. Call 1-800-428-3626 and specify that you are with NATRC.



Lunch will be a pasta bar at a cost of \$7.75 and dinner will be fajitas at a cost of \$12.25. That makes the total cost of food for the day at \$20.00 with breakfast included with room. What a bargain for a seminar!



Seminar registration cost unavailable at press time. Bill Smith will have that information soon.

Marty Martin will speak about how to develop a willing partnership with your horse. Learn how to improve communication skills, feel, timing and balance with your critter.

There are still more activities in the works – watch for more details!



## NEWS FROM NATIONAL

The board of directors has approved the Bev Tibbits Memorial Scholarship beginning in 1998. The \$1,000 scholarship will be awarded annually to college students in equine-related fields. If you or anyone you know would like to apply, contact the NATRC national office at P.O. Box 2136, Ranchos de Taos, NM, 87557. Application deadline is Jan. 15, 1998.

You can win two free ride entries to any NATRC-sanctioned ride in 1998! Here's how. Just send in a slogan to

help promote the sport of competitive trail riding to the national office or to either of your Region 3 national board members (Judi Tobias or Joe Quintana) before the November national board meeting.

The question of whether or not to make a rule change to allow paste electrolytes will be discussed at the upcoming November national meeting. If you have opinions – pro or con – contact either Judi or Joe soon. – *Judi Tobias*

# Stalwart crew takes on Colorado Trail

An outstanding crew of hard-working Region 3 members accomplished a substantial amount of maintenance on adopted Section 12 of the Colorado Trail, the weekend of Sept. 6-7. Mike Jubb, Jack and Sue McKelvy and Dee Overholt – along with John Kelly of the US Forest Service started early

Saturday morning and were re-enforced by Larry and Mary Ellen Keckler on Sunday. The work was done within three miles of the Copper Mountain ski area. We also put up our adopter sign at the lower end of the trail.

Our section of trail extends from Copper Mountain to Kokomo Pass, a

distance of about nine miles – the last four being above timberline at about 12,000 feet in elevation. There is still lots of work to do up on the trail.

My sincere thanks to all those who labored so valiantly! –*Neal McKinstry*



**Dedicated and hard-working crew** take a break in the action on the NATRC section of the Colorado Trail near Copper Mountain, Colorado. From left are Mike Jubb, Sue McKelvy, Jack McKelvy, Neal McKinstry, Dee Overholt, Larry Keckler and Mary Ellen Keckler. Thanks to these folks and other individuals who are willing and able to contribute their time on trail maintenance, we all can enjoy using nice trails. (Photo taken by John Kelly, USFS)

## Something to consider...

**The following is an excerpt from the NATRC Region 5 newsletter President's Letter:**

... when your horse is injured, time is one of the most important remedies. After a long period off, the Long Slow Distance method of conditioning will be required to bring the horse back to competitive form. The veterinarian who managed my horse's recovery from a significant tendon injury explained to me that fatigue is the most common factor in sport horse injuries. Race horses generally are injured in the last 1/16 of a mile. Grand Prix Stadium jumpers are injured at the last two jumps. He explained as the horse tires, his muscles lose their elasticity and are not able to support the horse's weight. Therefore, the tendons, joints and bones must handle more and more of the load. Also, the agility or athletic ability decreases with fatigue. So in combination – fatigue and restricted agility – the risk of tendon, joint or even bone injury occurring increases as the horse becomes tired.

While on the trail, be sensitive to your tiring horse. Several stumbling steps or unwillingness at steep ascents or descents may be his only way of telling you to take it easy so as not to cause significant injury. – *RFTRA Summer 1997.*

## Editor wanted!

It has finally dawned on me that I am going to have to give up doing the Region 3 Newsletter. Time conflicts and toddling kids – that don't sleep as much as they used to (yikes!) – are making it nearly impossible for me to do it anymore.

I have been doing this newsletter since 1990. It began with an offer to assist Jill (Talbot) Hicks as my way of contributing something to a sport I have enjoyed so much. It is a great way to keep up with all the latest news in the region.

If you like to mess with your computer and think that desktop designing is living at its finest, then this "job" is for you. Contact me at (303) 465-3621 for details or President Bill Smith at (505) 334-6275 – *Lisa Sowell*



## **Cavalier** **June 7-8, 1997**

### **Sweepstakes –**

**Open:** Jenny Smith/Wood's Rawhide Ace

**Novice:** Sandra Hollis/Pepsi

**Combined CP:** Tracie Scarlett/SW Windwalker

### **Open Heavyweight**

- 1/3 Wood's Rawhide Ace/J. Smith
- 2/5 Max-A-Million-C/S. Ancell
- 3/2 Fox's Charming Prince/L. Keckler
- 4/1 Dahhali/J. Hicks
- 5/4 Lady's Charlie B/J. Ancell
- 6/ Egyptian Gem Star/M. Shanor
- /6 Bill Smith

### **Open Lightweight**

- 1/4 Treble's Tempt Me/C. Jeffcoat
- 2/3 Sierra Blue/D/ Schriefer
- 3/2 Deacon's Dolly/T Cleveland
- 4/5 Mahra Khan/M. Parish
- 5/6 Zarr-Tan/K. Shanor
- 6/1 Afterglow/B. O'Shea

### **Open Junior**

- 1/2 Duster's Image/M. Dines
- 2/4 Tu Divine/K. Hoffman
- 3/3 Dutchess' Royal Duke/C. Smith
- 4/5 Mi Legacy/K. Barnes
- 5/1 Amber/A. Jahn

### **Competitive Pleasure**

- 1/1 SW Windwalker/T. Scarlett
- 2/2 CR Krystalette/P. Jubb
- 3/3 Just A Thriller/A. Rubenstein
- 4/4 Major/M Keckler
- 5/6 Tedolera/C. Fredal
- 6/5 Chico's Paintbrush/K. Cummings

### **Novice Heavyweight**

- 1/3 HA Petula/C. Knauss
- 2/1 Flight's Gorgeous Son/J. Benham
- 3/6 Bails Doc Juniper/S. Clayton
- 4/5 Moeft/B. Santistevan
- 5/2 Chester/B. Olson
- 6/4 Royale Symbol/L. Reuland

### **Novice Lightweight**

- 1/3 Pepsi/S. Hollis
- 2/1 Quickly/K. Wolgram
- 3/5 Raikin/A. Nixdorf
- 4/6 Poppy/B. Wolgram
- 5/ Boogers/S. Murphy
- 6/ KF Blizzard/J. Feldman
- /2 Sandie Wilson
- /4 Christina Fritson

### **Novice Junior**

- 1/1 Gambler's Girl/S. Chambless
- 2/2 Fantasia Sur Echo/N. Vasquez
- 3/3 Romeo/C. Jones

## **The Outlaw Trail** **July 5-6, 1997**

### **Sweepstakes**

**Open:** Klare Chapman/Jazz

**Novice:** Joyce Keeran/Shadow's Playgirl

**CP Combined:** Angie Rubenstein/Just A Thriller

### **Open Heavyweight**

- 1/3 Lady's Charlie B/J. Ancell
- 2/1 Wood's Rawhide Ace/J. Smith
- 3/4 Duster's Image/L. Keckler
- 4/ Max-A-Million-C/S. Ancell
- 5/ Moonshiner Silver Mist/F. Keeran
- 6/2 Sir Love/M. Baker
- /5 Bill Smith
- /6 Marc Shanor

### **Open Lightweight**

- 1/1 Jazz/K. Chapman
- 2/4 Missouri Bo WH/K. Chapman
- 3/6 Treble's Tempt Me/C. Jeffcoat
- 4/3 Zarr-Tan/K. Shanor
- 5/2 Doc Talon/L. Sasser
- 6/ Troubleshooter/B. Barker
- /5 Elaine Chavanon

### **Competitive Pleasure**

- 1/1 Just A Thriller/A. Rubenstein
- 2/3 Maken' Tray/T. Yates
- 3/2 Shadow Play/J. Tobias
- 4/5 Tedolera/C. Fredal
- 5/4 Chico's Paintbrush/K. Cummings
- 6/6 Dom Domingo/D. Fredal

### **Novice Heavyweight**

- 1/2 Shadow's Playgirl/J. Keeran
- 2/1 Moeft/B. Santistevan

### **Novice Lightweight**

- 1/1 Quickly/K. Wolgram

## **El Jinete Solitario/R3 Benefit** **July 26-27, 1997**

### **Sweepstakes –**

**Open:** Theresa Ancell/Lady's Charlie B

**Novice:** Judy Benham/Flight's Gorgeous Son

**CP Combined:** Audrey Taylor/WSA Desert Wind

### **Open Heavyweight**

- 1/5 Lady's Charlie B/T. Ancell
- 2/2 Max-A-Million-C/S. Ancell
- 3/4 Wood's Rawhide Ace/J. Smith
- 4/1 Duster's Image/L. Keckler
- 5/ Egyptian Gem Star/M. Shanor
- 6/ Halcyon Hurricane/T. Bengfort
- /3 Bill Smith
- /6 Matt Baker

## **El Jinete (continued)**

### **Open Lightweight**

- 1/3 Foxton Bandido/S. Eckel
- 2/5 Mahra Khan/M. Parish
- 3/4 Zar-Tan/K. Shanor
- 4/6 Par Sundance/P. Pfaltzgraff
- 5/2 SA Boomer/T. Smith
- 6/1 Par Torpedo/P. Embree

### **Open Junior**

- 1/1 Amber/A. Jahn
- 2/2 Foxton Bon Bon Belle/C. Malin

### **Competitive Pleasure**

- 1/1 WSA Desert Wind/A. Taylor
- 2/5 Renegade's Dandy/S. Weber
- 3/4 Tedolera/C. Fredal
- 4/3 Jeddah Star Of Lee/S. Hansen
- 5/6 Maryann's Wildfire/S. Wheeldon
- 6/2 Go Boy's Grande Finale/F. Hudson

### **Novice Heavyweight**

- 1/1 Flight's Gorgeous Son/J. Benham
- 2/5 Scinsational Lady/C. Rowe
- 3/ Shasta Kola/J. Wright
- 4/4 HA Petala/C. Knauss
- 5/2 Joe's Strawberry Shake/B. O'Neal
- 6/3 Moeft/B. Santistevan

### **Novice Lightweight**

- 1/1 Quickly/B. Wolgram

### **Novice Junior**

- 1/1 Quixote Poco Man/L. Daves

## **Championship Challenge**

### **Heavyweight**

- 1/4 Lady's Charlie B/J. Ancell
- 2/6 Ni Raffon/M. Kunkle
- 3/3 Duster's Image/L. Keckler
- 4/5 Wood's Rawhide Ace/J. Smith
- 5/ Gdapper/H. Logan
- 6/2 Max A Million/S. Ancell
- /1 Bill Smith

### **Lightweight**

- 1/3 Harca/S. Beverly
- 2/6 Prince Alla Ba Ha/E. Lovett
- 3/5 Par Torpedo/P./ Embree
- 4/ My Talent/K. Downing
- 5/1 Foxton Bandido/S. Eckel
- 6/2 Par Sundance/K. Hayes
- /4 Mary Anna Wood

Apologies for any misspellings – Lisa

# DE RESULTS

## Cedro Peak – A Ride Aug. 9-10, 1997

### Sweepstakes –

**Open:** Steve Ancell/Max-A-Million-C

**Novice:** Liz Greenhaus/Ginger

**CP Combined:** Audrey Taylor/WSA Desert Wind

### Open Heavyweight

1/2 Max-A-Million-C/S. Ancell

2/3 Wood's Rawhide Ace/J. Smith

3/1 Lady's Charlie B/J. Ancell

4/4 June's Lucky Mac/B. Smith

### Open Lightweight

1/1 SA Boomer/T. Smith

2/2 Par Sundance/K. Hayes

3/3 Mahra Khan/M. Parish

4/4 Jedda Star of Lee/P. Pfaltzgraff

### Open Junior

1/1 Dutchess Royal Duke/S. Smith

2/2 Quiote Poco Man/L. Daves

### Competitive Pleasure

1/1 WSA Desert Wind/A. Taylor

### Novice Heavyweight

1/1 Scinsational Lady/C. Rowe

2/2 AK Rafadi/J. McDonald

### Novice Lightweight

1/1 Ginger/L. Greenhaus

2/3 Poppy/B. Wolgram

3/2 Quickly/K. Wolgram

### Novice Junior

1/1 Fantasia Sprite/A. Krull

## Cedro Peak - B Ride Aug. 10, 1997

### Sweepstakes –

**Novice:** Jan Gellis/Streak

**CP Combined:** Dola Rekart/Brule

### Competitive Pleasure

1/1 Brule/N. Rekart

2/3 MS Khema Marie/S. White

3/2 St. Christian/S. Cornes

### Novice Heavyweight

1/5 Streak/J. Gellis

2/3 Khemo's Khalif/J. White

3/1 Mac's Ozark Dude/M. Webb

4/4 Shala Magik/J. Weeks

5/2 Shama/D. Franks

### Novice Lightweight

1/1 Dollar/K. Councilman

2/2 Smarty/J. Steichen

### Novice Junior

1/2 Shortcut Sunday/J. Councilman

2/1 Star/C. Councilman

## Signal Butte Aug. 16-17, 1997

### Sweepstakes –

**Open:** Ellen Lovett/Prince Alla Ba Hatl

**Novice:** Kary Woltman/Copy's Talk of Texas

### Open Heavyweight

1/3 Gdapper/H. Logan

2/1 Duster's Image/L. Keckler

3/2 Fox's Charming Prince/M. Jubb

### Open Lightweight

1/3 Prince Alla Ba Hatl/E. Lovett

2/2 Harca/S. Beverly

3/4 Egyptian Gem Star/K. Shanor

4/5 Ra Amon/E. Chavanon

5/1 Sierra Blue/D. Schriefer

### Competitive Pleasure

1/4 CR Krystalette/P. Jubb

2/5 Major/M. Keckler

3/2 Chico's Paintbrush/K. Cummings

4/1 Just A Thriller/A. Rubenstein

5/6 Chantilly Shamar/L. Hoth

6/3 Carol's Kopper Bar/M. Baker

### Novice Heavyweight

1/ Chester/B. Olson

2/1 Dale/A. Miller

3/5 Scinsational Lady/C. Rowe

4/3 Ebony's Angel Design/T. Woltman

5/2 Flight's Gorgeous Son/J. Benham

6/6 Gajala Ana/L. Miller

/4 Kirk Fraser

### Novice Lightweight

1/1 Copy's Talk of Texas/K. Woltman

2/2 Quickly/K. Wolgram

3/ Khal Kharisma/J. Lear

4/4 KF Blizzard/J. Feldman

5/3 Poppy/B. Wolgram

6/6 Raiden/S. Hollis

/5 Susan Cornes

## Top of the World Aug. 30-31, 1997

### Sweepstakes –

**Open:** Sherry Eckel/Foxton Bandido

**Novice:** Tom Thompson/Rusty

**CP Combined:** Angie Rubenstein/Just A Thriller

### Open Heavyweight

1/5 Max-A-Million C/S. Ancell

2/3 Wood's Rawhide Ace/J. Smith

3/2 Sir Love/M. Baker

4/4 Lady's Charlie B/J. Ancell

5/1 June's Lucky Mac/B. Smith

## Top of the World (continued)

### Open Lightweight

1/2 Foxton Bandido/S. Eckel

2/1 SA Boomer/T. Smith

3/3 Egyptian Gem Star/D. Schriefer

4/4 Rex's Black Pride/S. Wilson

### Open Junior

1/1 Foxton Bon Bon Belle/C. Malin

2/2 Dutchess Royal Duke/C. Smith

### Competitive Pleasure

1/1 Just A Thriller/A. Rubenstein

2/5 CR Krystalette/P. Jubb

3/2 Major/M. Keckler

4/4 Chico's Paintbrush/K. Cummings

5/ Chantilly Shamar/L. Hoth

6/6 Huckleberry Hill/B. Dumph

/3 Carol Fredal

### Novice Heavyweight

1/2 Dale/A. Miller

2/5 Ricccar/R. Thompson

3/3 Cezanne/S. Harvey

4/1 Flight's Gorgeous Son/J. Benham

5/4 Khal Kharisma/J. Lear

6/6 Ebony's Angel Design/T. Woltman

### Novice Lightweight

1/1 Jackson/D. Kielian

2/2 Copy's Talk of Texas/K. Woltman

3/4 BVA Amira Wazir/R. Lane

4/3 Quickly/B. Wolgram

5/5 Jet/M. Sargen

### Novice Junior

1/2 Rusty/T. Thompson

2/6 Budweiser/G. Phillips

3/1 Crimson/C. Thompson

4/4 Cisco/V. Chavanon

5/3 TRN Farrat/D. Chenoweth

6/5 Sapphire/T. Gamble

Apologies for any misspellings – Lisa

## BARN SALE

LOVELL OF MACK Custom No

Bounce products for distance riders. Cattle and wither bags, etc.

For free catalog call (970) 858-7323 or write 647 "R" Road, Mack, CO 81525-9724.

# El Jinete Solitario hosts Region 3 benefit

If you did not come to El Jinete then you missed out on great weather, beautiful scenery and all the fun there was to be had on the weekend of Jul. 26, 1997. El Jinete hosted the Region III Benefit Ride this year. Joe (AKA The Log Judge) Quintana was the vet judge and Judi Tobias the horsemanship judge.

Believe it or not, all went smoothly for first-time ride chair Kathe (Hissy) Hayes. The professional trail ride volunteers were out in force and did a fantastic job. Ellen Bontrager was the ride secretary. She and her army of helpers including Dima (from Russia), were invaluable to the success of the ride. Bill Cumberworth, Georgia Carroll and Dale McCoy made sure the P&R teams were on top - mountain and riders both! Ike Mosgrove served as Rules Interpreter. Theda Crispin was the accurate timer, Pat Montgomery



came all the way from her new home in Colorado Springs, Colo., to make sure the fledgling ride chair could find her way around the mountain in her car. This year's cook was Bill Hayes, kept under close supervision by Bill Smith. He kept everyone fed in a timely fashion and also put together the benefit barbecue which was donated entirely by the riders. There was plenty of food including washed, pricked and wrapped potatoes. Don't get any ideas for future rides, Bill H. says he's now retired.

Patti Embree put on the famous "Stick Horse race" and Jezebel was at her finest. There were lots of participants - young and old - to entertain the crowd waiting for awards to begin. Lonnie Smith brought in a new entry this year "Widow Maker." A fine steed he was and hope to see him again on the Stick Horse circuit.

Bob Santistevan auctioned off three El Jinete jacket patches, the last ones in existence. Top bidder was Matt Baker, followed by Jeannie Wheeldon and Chuck Smith. Proceeds from the auction went to the benefit of Region 3.

Because of our very efficient judge's secretaries, Janine Ancell, Abby Hazelwood and Judy Bengfort awards were completed promptly. All awards were donated by riders and winners were able to select their gifts from the prize table.

The volunteers and riders made this a wonderful time for everyone who participated. Thank you so much from the bottom of my heart! - *Kathe Hayes*

**Widow Maker the Stick Horse** making his debut at the El Jinete ride with Lonnie Smith holding the reins.

## OFFICIAL RIDE RESULTS

### Golden Gate Sept. 13-14, 1997

#### Sweepstakes -

**Open:** Terri Smith/SA Boomer

**Novice:** Ken Wolgram/Quickly

**CP Combined:** Angie Rubenstein/  
Just A Thriller

#### Open Heavyweight

1/1 Wood's Rawhide Ace/J. Smith

2/3 Egyptian Gem Star/M. Shanor

3/4 PS Gunarmus/S. Lindsey

4/2 Fox's Charming Prince/L. Keckler

#### Open Lightweight

1/1 SA Boomer/T. Smith

2/2 Zarr-Tan/K. Shanor

#### Open Junior

1/1 Dutchess Royal Duke/S. Smith

#### Competitive Pleasure

1/1 Just A Thriller/A. Rubenstein

2/5 Shadow/J. Tobias

3/ Windermere Mist/F. Solano

4/3 Huckleberry Hill/B. Dumph

5/ Chico's Paintbrush/K. Cummings

6/6 Tedolera/C. Fredal

/2 Audrey Taylor

/4 Sandra Hallford

#### Novice Heavyweight

1/ Gato/J. Pulvermacher

2/3 Riccericar/R. Thompson

3/2 Royale Symbol/L. Reuland

4/1 Dale/A. Miller

5/4 Khal Kharisma/J. Lear

6/ Flight's Gorgeous Son/J. Benham

/5 Bob Santistevan

/6 Carol Knauss

#### Novice Lightweight

1/2 Quickly/K. Wolgram

2/ Playfull Dove/J. Lemmel

3/4 Ammoniet/S. Cornes

4/5 Sable Sun/S. Bail

5/3 BVA Amira Wazir/R. Lane

6/1 Poppy/B. Wolgram

#### Novice Junior

1/1 Crimson/C. Thompson

Apologies for any misspellings - *Lisa*

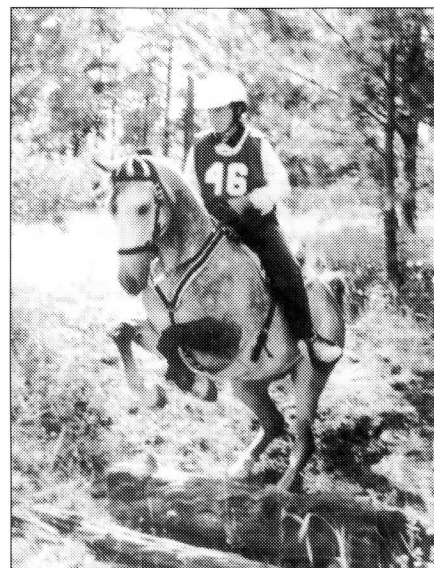
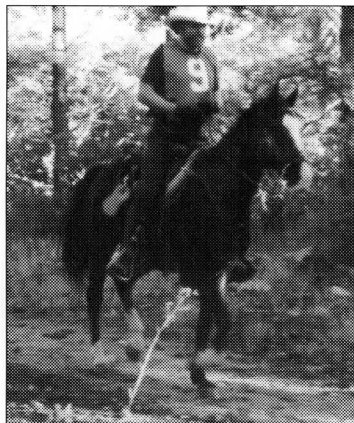


# Short takes ...

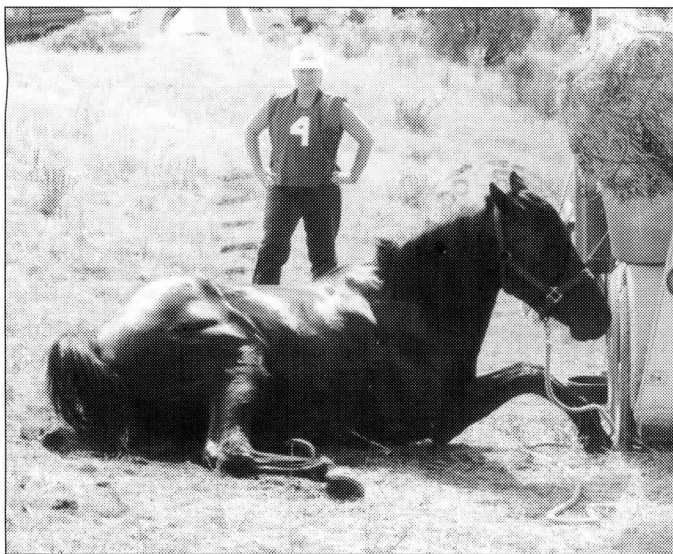


**At left, Milne Parish, Walsenburg, Colo., and Mahra Khan comtemplate the finish of their 102nd ride. Over 6,000 miles of competition and never pulled once! (Photo Judi Tobias)**

**At right, Carol Fredal, Colorado Springs, Colo., and Tedolera execute a graceful log crossing at the Top of the World ride. (Photo Carol Fredal)**



**Left, Larry Keckler from Divide, Colo., trots smartly past the camera at this year's Championship Challenge, hosted by Region 3. (Photo Judi Tobias)**



**Just when you get them cleaned up... Sandy Wilson watches her used-to-be-clean horse take a dust bath at the Top of the World ride. (Photo Donna Schriefer)**



**Nancy Loving, veterinary judge at the Championship Challenge ride makes a demonstration to the riders on Egyptian Gem Star. (Photo Donna Schriefer)**

## Attention Region 3 members!

If you have been considering running for the Region 3 board of directors now is the time to get a rope on Lonnie Smith, Region 3 vice president, at P.O. Box 283, Flora Vista, New Mex., 87410. Or give him a call at (505) 334-2001 and leave him a message no later than Nov. 1, 1997.

Have a part in the decision-making process in your sport!



**JET Arabian Ranch, Inc.**

For Sale, Purebred Arabians  
for Show and Long-Distance Sports

**Home of "Fyre Kracher" - Polish Stallion**

Jill Talbot Hicks  
Jeff Hicks

858 Marshall Road  
Boulder, CO 80303  
303/494-2531

# NATRC Membership Application

NATRC offers six membership plans (check plan desired):

- |  |  |
|--|--|
| <input type="checkbox"/> 1. FAMILY membership          | (\$35 per year) Household of one or two adults and children (one vote) |
| <input type="checkbox"/> 2. SENIOR membership          | (\$30 per year) Single adult member (one vote)                         |
| <input type="checkbox"/> 3. JUNIOR membership          | (\$20 per year) Single junior member under age 18 (no vote)            |
| <input type="checkbox"/> 4. ASSOCIATE membership       | (\$45 per year) Equine-related groups or businesses (no vote)          |
| <input type="checkbox"/> 5. SINGLE lifetime membership | (\$250) Any person of any age (one vote)                               |
| <input type="checkbox"/> 6. FAMILY lifetime membership | (\$350) Household of one or two adults and children (two votes)        |

**Membership is for twelve months from date of receipt**

All NATRC memberships include: rule book, membership card, club patch, ride schedule, newsletter, eligibility to compete for NATRC annual high score awards and championships, rider and horse mileage awards and reduced ride entry fees.

PLEASE LIST ALL FAMILY MEMBERS

Name(s) \_\_\_\_\_

Street \_\_\_\_\_ City, State, Zip \_\_\_\_\_

Phone (\_\_\_\_) \_\_\_\_\_ Birthdate of junior(s) \_\_\_\_\_ \$ enclosed \_\_\_\_\_

## NATRC Specialties\*

- |  |              |
|--|--------------|
| <input type="checkbox"/> Lapel Pin                   | \$3.00       |
| <input type="checkbox"/> Patch (incl. w/ membership) | \$1.75       |
| <input type="checkbox"/> Poster                      | \$1.00       |
| <input type="checkbox"/> 10" Decal                   | \$2.00       |
| <input type="checkbox"/> 4" Decal                    | 2 for \$1.50 |
| <input type="checkbox"/> Bumper Stickers             | \$1.50       |
| 2 for \$2.75; 3 or more \$1.25 ea.                   |              |

- |                                 |                           |
|---------------------------------|---------------------------|
| <input type="checkbox"/> Hat    | \$4.50 + \$2 P&H 1-5 hats |
| <input type="checkbox"/> Jacket | \$30.00 + \$3 P&H         |

Sizes: ☐ S34-36 ☐ M38-40 ☐ L42-44 ☐ XL 46-48

## NATRC Manuals\*

- |  |        |
|--|--------|
| <input type="checkbox"/> Rule Book (incl. w/ membership) | \$2.00 |
| <input type="checkbox"/> Judge's Manual                  | \$5.00 |
| <input type="checkbox"/> Rider's Manual                  | \$4.00 |
| <input type="checkbox"/> Management Manual               | \$4.00 |
| (plus P&H, 1-3 manuals)                                  |        |

## NATRC Videos\*

- |   |         |
|---|---------|
| <input type="checkbox"/> Vet Judge Video    | \$20.00 |
| <input type="checkbox"/> Horsemanship Video | \$20.00 |
| <input type="checkbox"/> Both Videos        | \$35.00 |

## Contributions to NATRC are tax

**deductible.** If you wish to show your added support by contribution to our Foundation Awards, Student Loan or General Funds, please increase the amount of your payment and direct how you wish it to be used.

☐ \$10 ☐ \$25 ☐ \$ Other  
How did you learn about NATRC?

\* All prices subject to change without notice, all manuals available to anyone, regardless of membership

**Make checks payable to NATRC (U.S. funds only) and mail to**

**NATRC, P.O. Box 2136, Ranchos de Taos, NM 87557-2136 - (505) 751-4198**

Former membership information

**1-95/REGION 3**

## REGION 3 NEWSLETTER

*North American Trail Ride Conference*

Lisa Sowell

8150 West 111th Avenue

Broomfield, CO 80021

**ADDRESS CORRECTION REQUESTED**



Bill & Judy Cumberworth  
(R-3-1997)(NM1/31/00)(D-3)  
1908 Glade Road  
Farmington, NM 87401