

# Region 3

SEPTEMBER/OCTOBER • 1996

## INSIDE THIS ISSUE...

Check out the official ride results beginning on page 3

Let's promote our junior riders see page 4



Plan to attend the Region 3 Seminar! Details on page 6

## Hot weather, full ride for Willow Springs

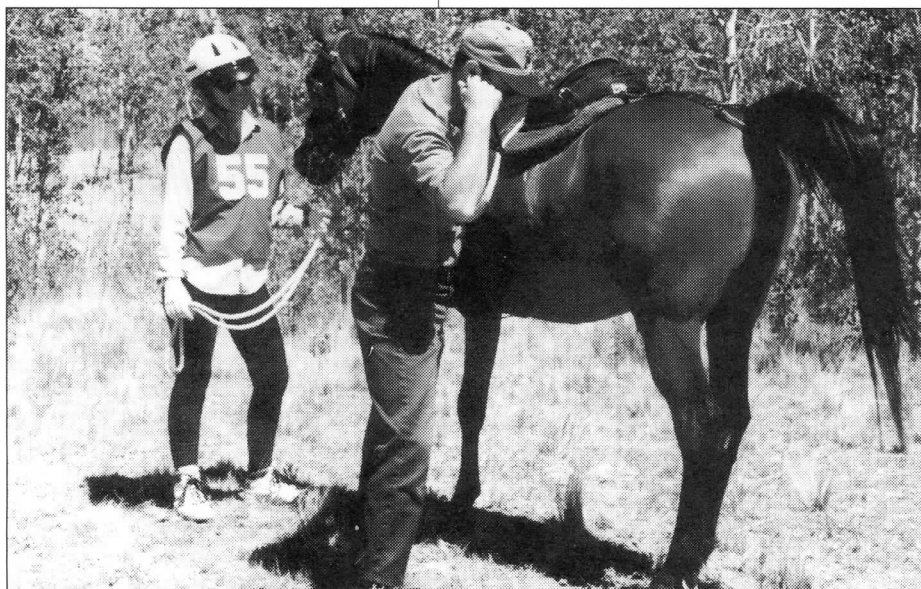
**W**orries about enough water in the springs, plentiful rain to make the wildflowers and grasses green, whether or not the sun would shine and the hail wouldn't fall – Willow Springs, in its third year, started. And did it again! We had the largest contingent of safety riders in Region 3 history. The count was lost as people who were unable to compete decided to help out. It fostered some NATRC folks reviewing the scene at the first obstacle and later on during the day to suggest that future trail rides charge a small fee to people who would like to ride the trail without the stress of being judged. Something for NATRC to consider.

Had a great day on July 6th. Scenery of white-capped 12,000 to 14,000-foot peaks surrounding South Park, unusual rock outcroppings, Indian paintbrush, asters, wild geraniums, gentians, aspen, pines and the beautiful rolling hills. Judges were working hard as were the four secretaries to keep up with the 65 riders who started. Several riders unfortunately became confused and lost the trail early in the ride – much to their chagrin and our dismay. Riders, it is imperative that you study your maps and be able to interpret trail and contours and other noted landmarks on the maps. Also, you must request clarification at briefings if something is not clear in your mind about the next day's trail.

For those who didn't know, Dee Overholt's gallant gelding Windwalker did recover from his colicky condition and is planning to compete again with the open heavyweights at future rides this season. Also recovered is Judi Tobias' mare, as well as one of the safety rider's mounts. The hot weather troubled a few horses. We were thankful to have a competent veterinarian on call and that the cell

*continued on page 3*

**VET JUDGE** Greg Fellers listens for gut sounds on competitive pleasure division rider Karen Fricke and her horse Artexerxis I at Willow Springs.



# Region 3

The *Region 3 Newsletter* is published bi-monthly. It is available by subscription to non-Region 3 members for \$8 per year. Requests/payment for subscriptions should be sent to Iris Mosgrove, 10590 Egerton Road, Colorado Springs, CO 80908.

**1996 deadline/distribution:** Jan./Feb. deadline Jan. 15, dist. by Jan. 30; Mar./Apr. deadline Mar. 15, dist. by Mar. 30; May/Jun. deadline May 15, dist. by May 30; Jul./Aug. deadline Jul. 15, dist. by Jul. 30; Sep./Oct. deadline Sep. 15, dist. by Sep. 30; and Nov./Dec. deadline Nov. 15, dist. by Nov. 30.

Display advertising rates: Full page (7 1/2" x 9 7/8"), \$50; half-page (7 1/2" x 4 15/16"), \$30; quarter-page (3 3/4" x 4 15/16"), \$15; eighth-page or business card (2 1/2" x 3 1/4" or 3 3/4" x 2 7/16"), \$10. Ad rates are per issue and must be camera-ready. Ads placed for five consecutive issues run a sixth time free. Pre-printed full-page flyers that are ready for insertion, are \$35 per issue. Barn Sale unclassified rates: Members: \$5 per ad, non-members: \$6 per ad.

Send all letters, articles, photos, etc. to: Lisa Sowell, 8150 West 111th Ave., Broomfield, CO 80021, (303) 465-3621.

## 1996 Board of Directors

Bill Smith	President & At Large
(505) 334-6275	
Dee Overholt	Vice Pres. & At Large
(303) 838-7507	
Kathryn Hayes	Secretary & D-5
(970) 884-9422	
Joyce Calhoun	Treasurer & At Large
(719) 547-3152	
Matt Baker	D-3
(970) 222-0748	
Susan Benjamin	D-6
(970) 242-1548	
Carol Beumer	At Large
(970) 824-9204	
Dan Fredal	At Large
(719) 481-3071	
Larry Keckler	At Large
(719) 687-2558	
Ike Mosgrove	D-2
(719) 495-2906	
Karen Laden	Past President
(719) 495-3892	
Jill Talbot Hicks	Nat'l. board
(303) 494-2531	
Judi Tobias	Nat'l. Board
(719) 593-7310	

# Ride/clinic schedule

• Sep. 28-29 – **Chokecherry Canyon Competitive Trail Ride**; Farmington, NM  
Contact: Russ Jones – (505) 334-3156

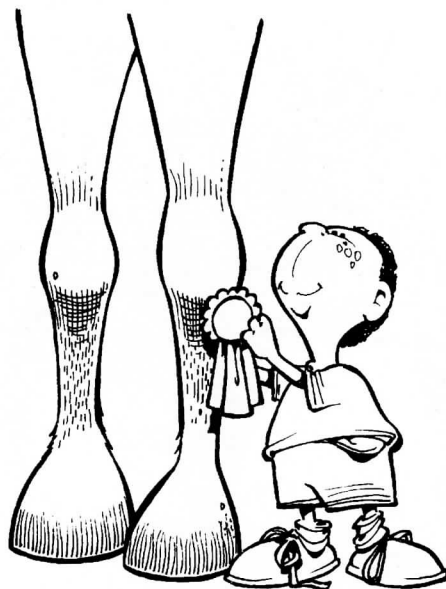
• Oct. 12 – **David B. Thomas "B" Competitive Trail Ride**; Farmington, NM  
Contact: Chris Barns – (505) 325-1171

## Give a kid a mile

**H**ow many times have you heard someone say, "We need more junior riders?" Well, here's your chance to do something about the problem.

Beginning in 1996, NATRC will have a Regional Youth Sponsorship Challenge.

Each region can solicit sponsors for junior riders. The sponsorships, in increments of at least \$10, can go toward ride entries or a junior membership. The junior can then request funds from his/her region. Juniors may also get sponsorships from individuals or businesses and turn the names in to their regional organization. All sponsors will be recognized in *Hoof Print* and regional newsletters. If the region has tax exempt status, the donation will be tax deductible. And, if you have a business, it's great publicity!



*What a great way to promote junior riders!*

Beginning in August 1996, the NATRC Foundation will offer seed money to help get the program started. It will offer \$200 to each region for scholarships, but the region must request the money from the national office.

The region that raises the most money will be recognized at the year-end awards. Remember, checks must be made payable to the region, then the region must forward the money to the junior when the junior submits a request.

This means each region must have someone willing to be the point of contact for the program. What a great way to promote junior riders! Will YOU help? If someone out there in Region 3 can take on this project, or if you'd like more information, call Judi Tobias at (719) 593-7310.

And juniors, send for your application before the beginning of the 1997 season to: NATRC, P.O. Box 2136, Ranchos de Taos, NM, 87557 or call (505) 587-1661.

C'mon, let's put lots of juniors on the Region 3 trails in '97! – *Judi Tobias*

## Willow Springs – a success story

phone worked. For NATRC Region 3 it will be an added safety measure to have cellular phones with safety riders and ride management for communications, as "cells" are added across the state in the future.

Our congratulations to all who completed the ride, the skillful and well-conditioned winners and our thanks to the volunteers – from judge's secretaries to P&R people and, of course, all our pre-riders and safety riders ... we couldn't have done it without you. We offer a special thank you to our young artist Pasha Uney, who designed our t-shirt. We have a few left. In case you've decided to get one, contact Sue McKelvy to have one or more shipped off to you. Funds raised by the sale of the shirts as well as the rider's vest deposits enabled NATRC

Region 3 to make a very generous donation to the Buffalo Creek Fire and Rescue group helping them to recover from the losses suffered in the fire and

subsequent floods, and to the Jefferson Rescue organization for its program. – Sue McKelvy



**HORSEMANSHIP JUDGE** Terri Yates observes the backing skills of Windwalker and his rider Cindy Wolfe. (Photos Sue McKelvy)

## OFFICIAL RIDE RESULTS

### Navajo Lake

May 11-12, 1996

#### Sweepstakes:

Open: Jenny Smith/Dutchess' Royal Duke  
Novice: Gail Brawley/Patches

#### Open Heavyweight:

- 1/3 Dutchess' Royal Duke/J. Smith
- 2/5 SW Windwalker/D. Overholt
- 3/2 Lady's Charlie B/J. Ancell
- 4/6 Mahra Khan/M. Parish
- 5/4 SA Boomer/L. Smith
- 6/1 Dahali/J. Hicks

#### Open Lightweight:

- 1/2 Brown R Dawud/J. Mason
- 2/4 Cognac Freckles Legs/P. Uney
- 3/1 Bar Alibi/T. Smith
- 4/3 Angel's Sunny/J. Jones

#### Competitive Pleasure:

- 1/4 Tara Shameel/J. Wagner
- 2/5 CR Krystalette/P. Jubb
- 3/6 Taffy/G. Daves
- 4/3 Montoya Olympian/S. Reed
- 5/2 Deylynn Moyaia/A. Taylor
- 6/ Rock'n Easy Rose/J. Wheeldon
- /1 Steve Ancell

#### Novice Heavyweight:

- 1/6 Patches/G. Brawley
- 2/4 Two/B. Olson
- 3/5 Ammoniet/S. Cornes
- 4/1 Katt Ballou/K. Alsup
- 5/3 Short Cut/B. Santistevan
- 6/2 Embee Karmel/S. Lyons

#### Novice Lightweight:

- 1/4 Bint El Rosal/H. Brackett
- 2/6 AL Flyer/J. Feldman
- 3/5 Buster/K. Lyons
- 4/3 Shaman/V. Sheets
- 5/1 Sunrise Tequila/S. LaRue
- 6/2 Ms Khema Marie/S. White

### Willow springs reports some special "finds" from the ride clean-up:

1. Purple zipped padded lunch box with blue ice block
2. Gray sweatshirt emblazoned "New York – Skyline Club"
3. Nalgene Trail plastic quart water bottle
4. Styrofoam lunch box with blue and white nylon cord handle
5. Pink, white and turquoise Little Playmate Igloo cooler

**These items can be claimed by contacting Sue McKelvy at (303) 838-2531.**

#### Novice Junior:

- 1/2 Kachina Doll/J. Murray
- 2/4 Kat Ballou/S. Alsup
- 3/3 Rainy Star/C. Jones
- 4/1 Mickey Mouse/L. Daves
- 5/5 Wood's Rawhide Ace/C. Smith

Apologies for any misspellings – lisa



# OFFICIAL RIDE RESULTS

## Cavalier

June 8-9, 1996

### Sweepstakes:

Open: Sherry Eckel/Foxton Bon Bon Belle

Novice: Shannon Mosley/Shadow Play

### Open Heavyweight:

1/1 Dahali/J. Hicks

2/2 Mahra Khan/M. Parish

3/6 PS Ganarmus/S. Lindsey

4/5 SW Windwalker/D. Overholt

5/3 Colidalot's Jedi/R. Wolff

6/4 Sir Love/M. Baker

### Open Lightweight:

1/1 Foxton Bon Bon Belle/S. Eckel

2/3 Cognac Freckles Legs/P. Uney

3/2 Talent's Image/R. Becker

## Open Junior:

2/1 Resort Valley Riga/C. Malin

### Competitive Pleasure:

1/3 Treble's Tempt Me/C. Jeffcoat

2/2 Major/M. Keckler

3/ Artexerxis I/K. Fricke

4/ Dom Domingo/D. Fredal

5/5 BW Star's Rainbow/K. Laden

6/6 Taffy/G. Daves

/1 Audrey Taylor

/4 Linda Adams

### Novice Heavyweight:

1/2 Ammoniet/S. Cornes

2/3 Desert Warrior/D. Mummau

3/ JJS Eladin/C. Rowe

4/4 Bail Doc Juniper/S. Clayton

5/6 Rim Rock Runner/T. Hull

6/1 Hahn's Diamond Rose/D. Schisler

/5 Sandra Barker

## Novice Lightweight:

1/1 Flight's Gorgeous Son/J. Benham

2/ IBN Faratt/B. Chenoweth

3/ Quickly/B. Wolgram

4/4 Zartan/K. Shanor

5/ Chauncey/C. Fritson

6/5 Dare Devil Dusty Dan/S. McKelvy

/2 Lisa Dice

/3 Rick Harper

/6 Rennie DeBoer

## Novice Junior:

1/1 Shadow Play/S. Mosley

2/3 Amber Airness/A. Jahn

3/2 Mickey Mouse/L. Daves

*Apologies for any misspellings – lisa*

## Willow Springs

July 6, 1996

### Sweepstakes:

Open: Sherry Eckel/Foxton Bon Bon Belle

Novice: Kathy Shanor/Zarr Tan

### Open Heavyweight:

1/4 Dahali/J. Hicks

2/1 SW Windwalker/D. Overholt

3/5 Barbara/L. Fisher

4/2 Fox's Charming Prince/L. Keckler

5/3 Sir Love/M. Baker

6/6 Alexi/G. Harlan

### Open Lightweight:

1/1 Foxton Bon Bon Belle/S. Eckel

2/3 Teddee/T. Daugherty

3/4 Two/B. Olson

4/2 Cognac Freckles Legs/P. Uney

5/5 Rex's Black Pride/S. Wilson

## Open Junior:

2/1 Resort Valley Riga/C. Malin

2/1 Dosilara/S. Mosley

### Competitive Pleasure:

1/4 Black Velvet SJ/G. O'Rourke

2/2 Major/M. Keckler

3/1 Arexerxis I/K. Fricke

4/ Golden Country Sunshine/C. Beumer

5/ Sadie/H. Hazel

6/ Roan Rose Bud/S. Kruczek

/3 Dan Fredal

/5 Ron Kruczek

/6 Carol Fredal

### Novice Heavyweight:

1/1 Mye Tiffany/E. Graybill

2/ Chauncey/P. Tice

3/5 Egyptian Gem Star/M. Shanor

4/ Sunset's Beauty/S. Bender

5/4 Rim Rock Runner/T. Hull

6/6 Joe/R. Van Bilder

/2 Sharon Holder

/3 Amy Freel

### Novice Lightweight:

1/1 Zar Tan/K. Shanor

2/ AL Flyer/J. Feldman

3/5 Quickley/B. Wolgram

4/3 Hoofin' It Merlin's Shadow/R. DeBoer

5/ Pepsi/S. Hollis

6/4 Sahabaret/D. Lucy

/2 Kris Cummings

/6 Penelope Freel

## Novice Junior:

1/2 Sugar Babe/C. McKnight

2/3 Fella Happiness/A. Webb

3/1 Classic Midnight/K. Phillips

*Apologies for any misspellings – lisa*

## HELP wanted!

### Region 3 Supply

**Chairperson.** Maintain rider vests, P&R supplies and notebooks, and mail them to the rides. Worker points, plus small payment. For information call Judi Tobias at (719) 547-7310.

**Someone to do the Region 3 worker points.** IBM computer helpful. Contact Joyce Calhoun at (719) 547-3152.

# The Hole in the Wall Gang rides again!

**T**he gang gathered in Maybell, Colo., on Aug. 17. We camped near the old cemetery about a quarter-mile from the Yampa River.

The river gives the valley its name and water to grow its hay. Once you leave the river banks, it's an inhospitable country with only sagebrush, juniper and sparse grass. But the morning was cool and the horses were fresh, so we headed north into the hills. As we crossed the river, a beaver greeted us. Soon after, we saw an eight-point bull elk and his harem. A bit further on a huge herd of antelope skittered away as we approached. Now we were in fetlock-deep sand with steep climbs and descents. The horses began to sweat. Bleached animal

bones littered the land – a testimony to this harsh land. Down into a deep draw we rode and there it was – the “hideout,” which had been used by Butch Cassidy, the Sundance Kid and their gang. It was deserted, so we headed toward the river to water the horses. We had been following tracks and now, ahead of us, we saw others heading to water. They were riding fast, so we kicked our horses into a lope and pursued them.

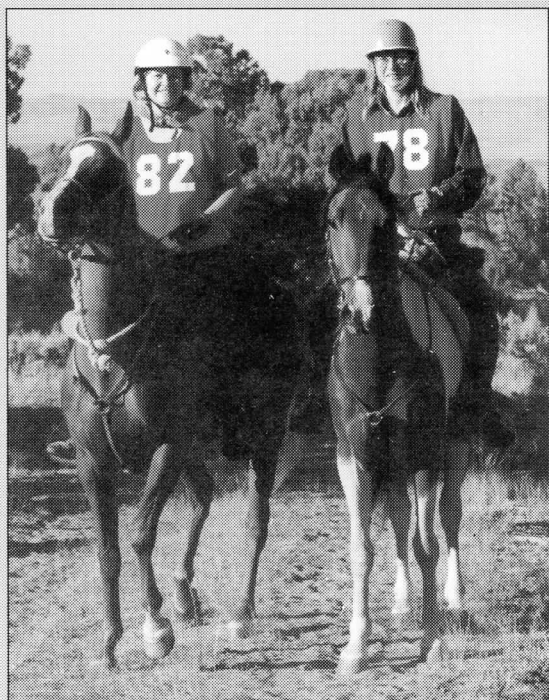
The river was cool and inviting so we stayed a bit, then headed on west. We saw steep cliffs and an eagle's nest near the old windmill. Again the horses drank, but it was getting late and time to head back to camp. We knew the cooks had barbecue and beans waiting for us.

The next morning was overcast and we were grateful for the respite from the heat. We headed out again,

retracing our steps to the hideout. Still no sign of the gang. The only sign of life was a couple of irate rattlesnakes. Calling it a day, we high-tailed it up the ridge and, after a couple of brief stops, to the camp by the cemetery.

A competitive trail ride yes, with awards and judges and the rest. But it was a fantasy too, a chance to revisit the west of years ago. And, who knows, maybe next year we'll meet up with Butch and Sundance somewhere out there.

Oh, there really is a “Hole in the Wall Gang.” They were headed up by Roger and Carol Beumer along with Sandra and Ron Kruczek, and they put on one heck of a ride. Don't miss it next year – it's a great adventure! – *Judi Tobias*



Headed down the trail at the Golden Gate ride near Blackhawk Colo., are No. 82 Janelle Lear riding Kharisma and Kris Cummings, No. 78 on her new horse Chico.

## A note of thanks ...

I am sending this letter to Judi Tobias and to the *Region 3 Newsletter*. In spite of all she had to contend with at the Golden Gate ride, many thanks go to Judi and to the following people who helped when my horse Kharisma colicked: Judd Adams, Larry Tobias, Tom Harris, Jerry Walker, Larry Keckler and Linda MacKinnon. Special thanks go to my daughter Sharon Hubbard, Kris and Nick Cummings – my support team. If there is anyone whose name I missed, I thank you as well.

I would have said something at the awards meeting, but my emotions wouldn't let me. It was very hard leaving the ride with an empty horse trailer.

On a happier note, Kharisma has recovered and we hope to ride with y'all again next year.

Sincerely, *Janelle Lear, Magnolia Tex.*

# BACK... to the Future

**R**eturn to the site of the first Region III Seminar 17 years ago: Colorado Springs, Colorado. Mark your calendar, make your hotel reservations and invite a friend today! Then watch for a registration form with complete seminar information in the next Region 3 Newsletter and in the mail.

**Date:** Saturday, January 11, 1997

**Seminar Cost:** \$10 pre-registration; \$15 at the door;  
Banquet cost and menu to be announced

**Place:** Radisson Inn North, Colorado Springs  
8110 N. Academy Blvd. (directly off I-25)

**Hotel Cost:** \$59 per night, up to three people in a room;  
Call 1-800-333-3333 by December 11 to make room reservations at this special price

**Seminar Schedule: Saturday, January 11**

11:30 a.m.

to 1:15 p.m.

**Registration**

Lunch

On your own; \$5 all-you-can-eat lunch bar available in the hotel

1:30 p.m.

**Annual Meeting**

- Rule changes for 1997
- New regional membership category
- Other key member-related items

3:45 p.m.

**Managing Competitive Horse Care:**

Helping your horse (and you) make the transition to the open division  
Perspectives from veterans and successful newcomers to open on such topics as feeding, scheduling farrier/health care, conditioning, the psychology of competition and planning your campaign.

4:45 p.m.

**Every Time, Every Ride**

Video on the safety aspects of wearing a riding helmet

6:00 p.m.

**Dinner and regional awards**

**Sunday, January 12**

7:00 a.m.

**Region III Board Meeting**

\$5 all-you-can-eat breakfast bar – MEMBERS WELCOME!

**For information, Call Karen Laden (719) 495-3892 or Judi Tobias (719) 593-7310**





Honoring the tradition of Telegraph Hill by way of a special hat (at the Cavalier Trail ride) is Sandy from Woodland Park, Colo. (Picture from Sue McKelvy)

## BARN SALE

**SICK of sleeping in a tent?** 1982 Dodge Power Ram D150 4WD with overhead camper. Easy to maneuver in tight campsites, it has a strong, performance-built 440 and newly rebuilt automatic. Low mileage, set up for towing, everything heavy duty and meticulously maintained by my mechanically-minded perfectionist spouse. Selling because we need to haul around our expanding family and need a truck with more seats. \$4,500/OBO. Call Lisa or Bill at (303) 465-3621.

### JET ARABIAN RANCH Sales List:

**JET Gadam** (Pladom x Gahali) 1993 grey half Egyptian, half Russian Arabian filly. A fantastic race or endurance prospect. A real mover! Straight legs, calm and willing disposition. Has had

lots of ground work, i.e. trailer loading, ponied on many trail rides, clinics, accustomed to clip-pers, etc. Started under saddle Fall of '95. A real love! \$3,000.

**JET Fyrelle** (Fyre Kracher x Eleben) yearling bay filly with white star and three white stockings. Real flashy! Strong athletic mover, ground work started. Would be an excellent long-distance prospect. \$2,000.

Please call Jill Hicks at (303) 494-2531.



### JET Arabian Ranch, Inc.

*For Sale, Purebred Arabians for Show and Long-Distance Sports*

**Home of "Fyre Kracher" - Polish Stallion**

Jill Talbot Hicks  
Jeff Hicks

858 Marshall Road  
Boulder, CO 80303  
303/494-2531

### Deluxe English Cattle Bags

Price: \$55  
Shipping/insurance: \$5

### Collapsible Buckets

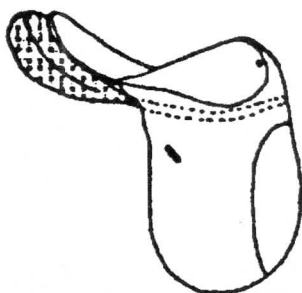
Price: \$13  
Shipping/insurance: 3

### Pommel/Wither Bag

Bag only: \$65  
Bag/2 water bottles: \$70  
Bag/2 water bottles/snap on heart monitor pocket: \$80  
Shipping/insurance: \$8

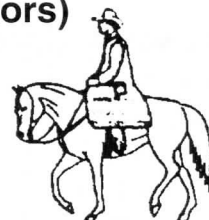
### Haunch Heater

Price: \$55; Ship./ins.: \$5  
With removable Polar Plus lining: \$105; Ship./ins.: \$8



### People Slicker (over 40 colors)

Slicker only: \$110  
Slicker with hood: \$125  
Detachable cape: \$45  
Shipping/insurance: \$8  
Aussie-style slicker: \$215  
Shipping/insurance: \$10



### Helmets

Troxel Sport; white or black: \$50  
Troxel Legacy; black, purple or hunter: \$55  
Lexington Lidlocker; white: \$55  
Wider brim for Sport or Lidlocker: \$10  
Shipping/insurance: \$5

### V-Max Basic C Heart Monitor

Price: \$145; Shipping/insurance: \$5

### Flexion, Select and J Bar D

supplements available with discounts on larger amounts.

**LOVELL  
OF MACK**

Box 243, 647 "R" Road  
Mack, CO 81525-9724  
(970) 858-7323

**Call or write  
for a free  
catalog!**

**CONTACT ME** for all of your  
book and video needs.  
**DISCOUNT** on more than one.

# NATRC Membership Application

NATRC offers six membership plans (check plan desired):

- |  |  |
|--|--|
| <input type="checkbox"/> 1. FAMILY membership          | (\$35 per year) Household of one or two adults and children (one vote) |
| <input type="checkbox"/> 2. SENIOR membership          | (\$30 per year) Single adult member (one vote)                         |
| <input type="checkbox"/> 3. JUNIOR membership          | (\$20 per year) Single junior member under age 18 (no vote)            |
| <input type="checkbox"/> 4. ASSOCIATE membership       | (\$45 per year) Equine-related groups or businesses (no vote)          |
| <input type="checkbox"/> 5. SINGLE lifetime membership | (\$250) Any person of any age (one vote)                               |
| <input type="checkbox"/> 6. FAMILY lifetime membership | (\$350) Household of one or two adults and children (two votes)        |

**Membership is for twelve months from date of receipt**

All NATRC memberships include: rule book, membership card, club patch, ride schedule, newsletter, eligibility to compete for NATRC annual high score awards and championships, rider and horse mileage awards and reduced ride entry fees.

PLEASE LIST ALL FAMILY MEMBERS

Name(s) \_\_\_\_\_

Street \_\_\_\_\_ City, State, Zip \_\_\_\_\_

Phone (\_\_\_\_) \_\_\_\_\_ Birthdate of junior(s) \_\_\_\_\_ \$ enclosed \_\_\_\_\_

## NATRC Specialties\*

- |  |              |
|--|--------------|
| <input type="checkbox"/> Lapel Pin                   | \$3.00       |
| <input type="checkbox"/> Patch (incl. w/ membership) | \$1.75       |
| <input type="checkbox"/> Poster                      | \$1.00       |
| <input type="checkbox"/> 10" Decal                   | \$2.00       |
| <input type="checkbox"/> 4" Decal                    | 2 for \$1.50 |
| <input type="checkbox"/> Bumper Stickers             | \$1.50       |
| 2 for \$2.75; 3 or more \$1.25 ea.                   |              |

- |                                 |                           |
|---------------------------------|---------------------------|
| <input type="checkbox"/> Hat    | \$4.50 + \$2 P&H 1-5 hats |
| <input type="checkbox"/> Jacket | \$30.00 + \$3 P&H         |

Sizes: ☐ S34-36 ☐ M38-40 ☐ L42-44 ☐ XL 46-48

## NATRC Manuals\*

- |   |        |
|---|--------|
| <input type="checkbox"/> Rule Book (incl. w/ membership)              | \$2.00 |
| <input type="checkbox"/> Judge's Manual                               | \$5.00 |
| <input type="checkbox"/> Rider's Manual                               | \$4.00 |
| <input type="checkbox"/> Management Manual<br>(plus P&H, 1-3 manuals) | \$4.00 |

## NATRC Videos\*

- |   |         |
|---|---------|
| <input type="checkbox"/> Vet Judge Video    | \$20.00 |
| <input type="checkbox"/> Horsemanship Video | \$20.00 |
| <input type="checkbox"/> Both Videos        | \$35.00 |

**Contributions to NATRC are tax deductible.** If you wish to show your added support by contribution to our Foundation, Awards, Student Loan or General Funds, please increase the amount of your payment and direct how you wish it to be used.

☐ \$10 ☐ \$25 ☐ \$ Other  
How did you learn about NATRC?

\* All prices subject to change without notice, all manuals available to anyone, regardless of membership

**Make checks payable to NATRC (U.S. funds only) and mail to**

**NATRC, P.O. Box 2136, Ranchos de Taos, NM 87557-2136 – (505) 751-4198**

Former membership information

**1-95/REGION 3**

## REGION 3 NEWSLETTER

*North American Trail Ride Conference*

Iris Mosgrove

10590 Egerton Rd.

Colorado Springs, CO 80908

**ADDRESS CORRECTION REQUESTED**