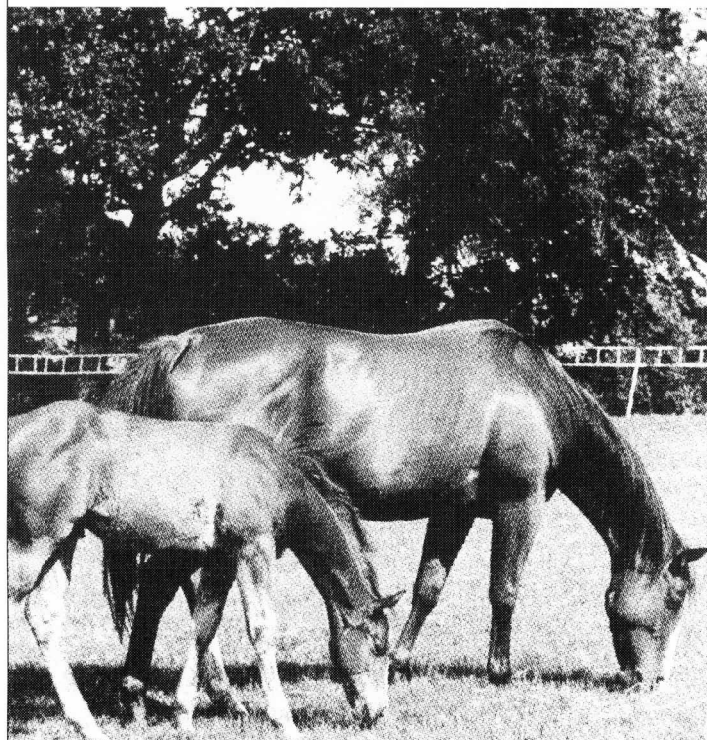


# Region 3

SEPTEMBER/OCTOBER • 1995

## Foreign disease hits western states horse industry

*Vesicular stomatitis*



**A suspected foreign animal disease in a horse was reported to the United States Department of Agriculture (USDA) area office on May 1, 1995, by a Las Cruces, New Mex., veterinarian.**

The horse was reported to have vesicles (blisters) and ulcers on the tongue, gums and lips. The tongue was swollen and the animal was not eating. The cause of the illness was determined to be vesicular stomatitis (VS). VS is a viral disease that primarily affects cattle, horses

and swine. It occasionally affects sheep, goats, llamas, wildlife and humans.

By June 20, 1995, 30 premises in New Mexico had the confirmed viral disease vesicular stomatitis. The Disease Task Force had 91 investigations on-going on properties in the Rio Grande River Valley. Task force veterinarians conducted investigations by taking blood and tissue samples as a diagnostic process. Cases are confirmed by laboratory isolation of the vesicular stomatitis virus. By June 27, New Mexico state veterinarian Dr. Phil LaRussa had nine counties quarantined and a restricted zone for the movement of livestock.

***Vesicular stomatitis sporadically occurs in the U.S., typically between late spring and early fall.***

By mid-July, cases were reported in Arizona and Colorado – Dolores and La Plata counties. When a positive case is reported in a specific county, that county is quarantined for any movement of livestock, including horses.

Vesicular stomatitis sporadically occurs in the U.S., typically between late spring and early fall. This seasonal occurrence has led researchers to believe that the disease can be transmitted by insects, as well as by contact with affected animals.

Animals of all ages can be affected. VS causes blister-like lesions in the mouth, tongue, nostrils, feet and teats. The blisters swell and break, leaving painful ulcers.

*Continued on page 5*

# Region 3

The *Region 3 Newsletter* is published bi-monthly. It is available by subscription to non-Region 3 members for \$8 per year. Requests/payment for subscriptions should be sent to Iris Mosgrove, 10590 Egerton Road, Colorado Springs, CO 80908.

**1995 deadline/distribution:** Jan./Feb. deadline Jan. 15, dist. by Jan. 30; Mar./Apr. deadline Mar. 15, dist. by Mar. 30; May/Jun. deadline May. 15, dist. by May 30; Jul./Aug. deadline Jul. 15, dist. by Jul. 30; Sep./Oct. deadline Sep. 15, dist. by Sep. 30; and Nov./Dec. deadline Nov. 15, dist. by Nov. 30.

Display advertising rates: Full page (7 1/2" x 9 7/8"), \$50; half-page (7 1/2" x 4 15/16"), \$30; quarter-page (3 3/4" x 4 15/16"), \$15; eighth-page or business card (2 1/2" x 3 1/4" or 3 3/4" x 2 7/16"), \$10. Ad rates are per issue and must be camera-ready. Ads placed for five consecutive issues run a sixth time free. Pre-printed full-page flyers that are ready for insertion, are \$35 per issue. Barn Sale unclassified rates: Members: \$5 per ad, non-members: \$6 per ad.

Send all letters, articles, photos, etc. to: Lisa Sowell, 8150 West 111th Ave., Broomfield, CO 80021, (303) 465-3621.

## 1995 Region III Board of Directors

Karen Laden	President & At Large
(719) 495-3892	
Dee Overholt	Vice Pres. & At Large
(303) 838-7507	
Nancy Reinhardt	Secretary & At Large
(719) 495-2605	
Lois Arbour	At Large
(303) 838-4487	
Matt Baker	D-3
(970) 222-0748	
Dan Fredal	At Large
(719) 486-3071	
Kathryn Hayes	D-5
(970) 884-9422	
Larry Keckler	At Large
(719) 687-2558	
Neal McKinstry	D-6
(970) 858-9042	
Ike Mosgrove	D-2
(719) 495-2906	
Susan McKelvy	Past President
(303) 838-2531	
Joyce Calhoun	Nat'l. board and R3
(719) 547-3152	Treasurer
Jill Talbot Hicks	Nat'l. board
(303) 494-2531	
Judi Tobias	Nat'l. Board
(719) 593-7310	

# TRAIL TRACKS by JUDI TOBIAS

**T**raveling around the country, talking to all kinds of trail users, can be interesting and enlightening. We horse people can't imagine why anyone would resent our horses being on the trails. We feel like we're pretty considerate trail users. However, other trail users sometimes don't see things that way. For example, seldom seen are a work party of equestrians at a trail cleanup or maintenance day. And if they do come, they don't bring their horses.

*Go to a few parks  
department meetings  
and let it be known  
you're a horse person.*

I recently spoke to some NATRC folks from California and they were telling me about some trail cleanup they were involved in. If your horse group gets involved in trail maintenance, take your camera along, take some pictures and get them in your local paper or trail magazine. Add a story about what the group is doing. It doesn't take a Pulitzer prize-winning article, just a short recital of who and where. We need to get these efforts publicized. Go to a few parks department meetings and let it be known you're a horse person. Just the fact that you're attending will speak volumes for the entire horse community.

We also need to avoid getting negative publicity for horses on trails. Clean up around your trailer at trailheads. Scatter or bag your manure and hay. Don't make derogatory remarks about other trail users. Smile and say hello when you meet a jogger or bicyclist. You'd be surprised how much that can accomplish. If your horse shies at a runner or a bike, don't always assume it's the other person's fault. Maybe your horse needs some more hours on the trail or some "spook-proofing." I know you've heard these same things from me (and from others) before, but they can't be restated too often.

On another subject, I've been given an assignment to do an article on the effect that the new "weed-free hay" regulations in the national forests will have on equestrian use of the forests. If you have any input, please call me at (719) 593-7310. I need all the help I can get to make this article as comprehensive as possible. Happy trails! — Judi Tobias

*Smile and say hello  
when you meet a  
jogger or bicyclist.*



**JET Arabian Ranch, Inc.**

*For Sale, Purebred Arabians  
for Show and Long-Distance Sports*

**Home of "Fyre Kracher" - Polish Stallion**

Jill Talbot Hicks  
Jeff Hicks

858 Marshall Road  
Boulder, CO 80303  
303/494-2531

# REGIONAL BOARD HIGHLIGHTS

*The following is a BRIEF SUMMATION of the minutes of the Region III board meeting on June 25, 1995. Minutes in full detail may be obtained from Nancy Reinhardt, Region III secretary.*

Amended changes to last meeting minutes include changing \$8 per vest to \$5 per vest, plus materials. General meeting minutes (3rd sentence) change without tack to with tack.

**Treasurer's report:** Bretag account below \$5,000 but ad money coming in from Ride Book. Joyce and Kathe in contact with Sena to check on delay. National board account at \$2,063 with \$1,200 to be withdrawn soon. Ride fees received from Rabbit Valley only. Rides have not been filling likely because of bad weather and the vesicular stomatitis outbreak. Low \$ balance a concern for travel funds to November meeting.

**Membership:** Ike suggests that R3 start sending a renewal reminder postcard like national so it is clear when dues are to be paid. Other discussion about putting renewal information on newsletter mailing labels.

**Colorado Trail Workday:** Date remains at August 5, 1995. Contact Kathryn Utke (719) 495-3431 for info.

**Public Relations:** Jill Talbot Hicks wrote an article for the *Colorado Horse News*, April 1995 issue, and she also attended the Horse Expo at the Denver Coliseum last March. She recommends R3 get a booth next year to promote competitive trail riding.

**Historian:** Nancy Reinhardt requests that people send pictures (with names and dates, please) and articles. Would like to update display also.

**Clinics and Supplies:** Judi Tobias discussed halter tag preferences. R3 will finish out this year in same fashion as in the past. Will be brought up in general membership meeting. Also discussion about whether the two supply persons are actually co-chairs or each a chairperson, thus allowing 250 worker points per person.

**Safety:** Lois has been contacting junior riders about the helmet rule. Concern has been expressed about non-NATRC members not following guidelines. Waivers must be signed and guidelines adhered to.

**National board business:** Clarification on exactly when helmets are to be worn. Rule change – rider should be allowed option of longeing or running with horse at vet check. Will work on policy concerning mailing labels usage and bad checks written for fees. Discussion followed of ride management being non-members. Chair or secretary should be members; if choice is made not to pay R3 dues, then that ride will not be sanctioned; if safety rules are not observed, then a penalty should be enforced (perhaps pulling that year's sanction). National board should state when sanction request is submitted that ride management must agree to pay region dues *and* there should be some kind of protest clause. Ride management should support the region they are in. As long as R3 is promoting national membership it seem appropriate that national should rec-

iprocate by promoting regional membership. Seems like a good idea to make the membership fee a combination so that it is automatic to belong to both. National board may be asking the regions to help with sanctions. Recommendation make that the Judge's Committee monitor judges 1 out of 3 years to be sure they are up to date.

**Old business:** District reorganizing committee reviewed survey responses. Each committee member will make up a plan based on results and return it to Jill by Aug. 1. The complete packet of plans will then be sent to all committee members, who will then condense or pick one at the next board meeting.

**Benefit Ride:** Top of the World needs prizes and workers (especially P&R people). 1996 benefit ride was to be El Jinete, but because of construction at the ski area it cannot happen. Ride managers should consider making their next ride the R3 benefit ride.

Because of scheduling conflicts with rides and the national board meeting schedule, El Jinete may be moved into August. Karen Laden will speak to Judy Mason about returning Cavalier's Ride to third weekend in June to allow a week in between Turkey Track, Colorado Trail and Cavalier's.

**New Business:** Joyce Calhoun would like to order single-copy checks in the future, as the duplicate checks are never used for anything.



Discussion of late fees and renewals. Some feel there is confusion about when the fees are due. If fees are paid later than March 1, the person's name will not appear in directory, will not be sent a Ride Book and will be assessed a \$15 research fee.

The Colorado Horse Rescue needs volunteers, who are located, or can travel, about 1-4 hours from Denver.

Regional fees support our national board representatives. Of the \$4 total, \$3 goes for that purpose and \$1 goes into the general fund.

Motion made/passed to clarify Standing Rule No. 9; points will not be awarded for regional year-end awards (horse, rider, worker) from a R3 ride until fees from all riders have been received from ride managements to R3.

*Continued on page 4*

<b>Flying Walker Ranch</b> Tennessee Walkers	KARY WOLTMAN, C.V.T. (303) 367-5257 Aurora, Colorado
	<b>KRYO KINETICS ASSOCIATES</b>
	<ul style="list-style-type: none"><li>• Freeze Marking</li><li>• Equine Appraisals \$</li><li>• Tennessee Walking Horse Sales and Stud Service</li></ul>
Certified Member of American Society of Equine Appraisers Certified & Licensed Technician of Kryo Kinetics Freeze Marking Assoc. Member of Tennessee Walker Horse and Breeders, Exhibitors Assoc.	



# Willow Springs Ride Report

The Willow Springs "B" Competitive Ride for 1995 started with a judged mount and back-up obstacle – to the chagrin of the 47 riders and their eager horses. Naturally, under the scrutinizing gaze of the judges Patsy (Tomb) Conner and Rod Niwa, DVM. The day's promise of sunny, warm weather was realized as the riders splashed across a creek (another obstacle) and enjoyed a forced trot to a P&R. Some riders accused ride management of sadistic motivation and said it was at least 3 miles – however, per truck odometer, it was actually less than a mile.

The ride's locale outside of Jefferson, Colorado, boasts some of the most spectacular scenery in the state.

*Some open riders confessed to missing turn ribbons when they were "breezing" along the open loop at a canter just for the sheer pleasure.*

Snow-topped mountains ring South Park, including some fourteeners, the aspen were in fresh green foliage and the rolling hillsides were tacked down by a varietal selection of wildflowers. The trails provided good footing and plenty of water for the horses at strategic locations. Some open riders confessed to missing turn ribbons when they were "breezing" along the open loop at a canter just for the sheer pleasure. This year's

competitors included several Region 3 horsemanship judges, eleven junior riders in the open and novice classes, and a number of first-time riders. All, including repeaters, seemed to enjoy the day's ride and we extend the invitation to join us again next year! – Sue McKelvy

From page 3

## REGIONAL BOARD HIGHLIGHTS

**1996 regional seminar:** Slated for Saturday, Jan. 13, 1996 in Grand Junction. Emphasis will be on longer General Meeting, then a seminar to begin at noon. The regional board meeting would be the next day (Sunday).

**Ride book:** Bid submitted by Lisa Sowell for \$500. Motion made/passed to accept. Would like book by Feb. 10 to take to national seminar.

**Board elections:** Judi suggested sending a postcard to members to solicit interest in running or becoming a committee member. Will try to avoid filling at-large slots with District 2 members.

A different method was used for timing out at Rabbit Valley. Riders were given time in advance and told they could leave on their mark. There was some confusion over the synchronization of watches, but a large clock was available for all to see. This issue will be covered on ride critique. Discussion of types of halter tags, as opposed to numbering the horses themselves. This issue will be taken up at the general membership meeting in January.

**Weed-free hay:** Judi will contact COHOCO and the American Horse Council to get more information, and also how to obtain it. This issue needs to be brought up at the national board meeting.

**Next board meeting:** Sunday, Oct. 15, 1995, at the David B. Thomas ride, beginning at 8 a.m.

## Horses: business or hobby?

*IRS stipulations on running a horse operation*

**IRS publication No. 535 states the following criteria must be met to consider your horse operation to be a business:**

- ☛ You must show a profit two of the last seven years, including the current year, to be presumed to be a business for profit.
- ☛ You must conduct your business in a business-like manner.
- ☛ The time and effort you put into activity indicates an intent to make a profit.
- ☛ You depend on income from the activity for your livelihood.
- ☛ Whether your losses are due to circumstances beyond your control or are normal in the startup phase.
- ☛ Whether you change your methods of operation to improve the profitability of the activity.
- ☛ Whether you or your advisors have the knowledge to carry on the activity as a successful business.
- ☛ Whether you were successful in making a profit in a similar activity in the past.
- ☛ Whether the activity makes a profit in some years and how much profit it makes.
- ☛ Whether you can expect to make a future profit from the appreciation of the assets used in the activity.

– From the Continental Divide Morgan Horse Assoc. Newsletter

# Update on vesicular stomatitis

***VS accounts for less than five percent of deaths in animals.***

The most common clinical sign is drooling or frothing at the mouth. Affected animals generally refuse to eat or drink and may show signs of lameness. Severe weight loss may follow. Lameness or laminitis (founder) in horses may persist or rarely progress to sloughing of the hoof. The horse can recover from the disease. If it happens to hit an older or sick horse, it can be devastating. Colorado's last outbreak was in 1985. The State Fair cancelled breed shows and many horse activities across the state were also cancelled. VS accounts for less than five percent of deaths in animals.

Currently, there is an outbreak of VS which is confined to New Mexico, Arizona and Colorado. Movement of animals within and out of these states has been severely restricted. To date, most of the affected animals have been horses. Several countries have placed embargoes on live animals or animals products from the U.S. Kentucky has forbidden the entry of horses from the above-mentioned states.

Horse owners need to keep in mind that showing and points are not vital. Shipping in and out of the restricted areas, thereby bringing together large numbers of horses, can speed up the spread of the disease. Violating a quarantine or restricted area has resulted in fines and imprisonment. Horse show competitions, rodeos, etc. are currently being cancelled in the affected areas of New Mexico and Colorado in an attempt to prevent the spread of VS.

Some preventative measures

include a good insect-control program (individual animal treatments, sprays and elimination of insect habitat); limited introduction of new animals into a herd; limiting direct or indirect with animals from other premises (to include livestock handlers and trainers, also clean and disinfect equipment that has been in contact with animals from other premises). In addition, stabling of horse appears to decrease the likelihood of infection. Prompt separation of affected animals from others will also decrease spread. Increasing the resistance of animals to infection can include maintaining natural barriers to infection and stimulating immunity. Mouth lesions due to coarse feeds or foot trauma may provide avenues of entry for the virus.

***The efficacy of vaccine in horses is unknown.***

Vaccination is another tool to stimulate immunity in susceptible animals. The only vaccines of VS currently available are autogenous killed products from Grand Laboratories. Autogenous vaccines are produced under special USDA provisions to satisfy unique specific conditions often involving severe localized outbreaks. The vaccine is produced from virus collected from an animal infected in the current outbreak. There are separate products for cattle and horses. The cattle product must not be given to horses as it may cause severe local reactions. The efficacy of vaccine in horses is unknown. As with all vaccines, there is a risk of adverse reactions. Killed autogenous viral products are not expected to cause more adverse reactions than any other killed viral vaccine product.

There are no laboratory tests to distinguish the difference between a positive serological reaction due to a horse

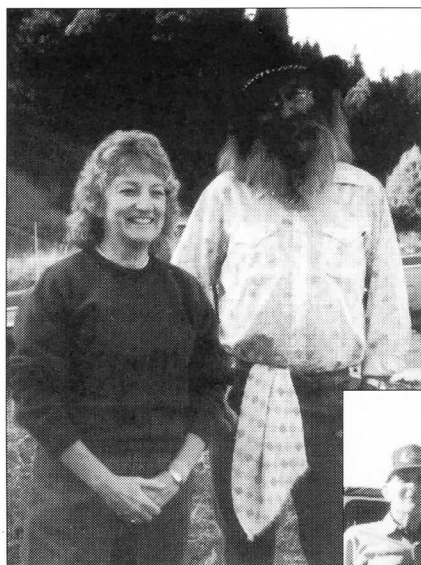
***Isolate any animals with suspicious signs and consult your vet.***

being vaccinated or a horse that was infected naturally. The American Association of Equine Practitioners also is concerned about the efficacy of the VS vaccine in horses. Only limited studies have been performed on horses and the vaccine – even though many believe the vaccine helped during outbreaks occurring in 1983 and 1985. The vaccine is administered in two doses two weeks apart and takes at least 10 days to develop protection. These products have been approved by the USDA for release on July 18, however, the production of the product is to be used by dairy herds as a priority. Contact your local veterinarian for more information on the need to vaccinate.

Remember ... the movement of susceptible animals from affected areas pose a high risk. Observe your animals closely. Isolate any animals with suspicious signs and consult your vet immediately. When moving or accepting shipment of animals, consult a veterinarian. Do not move or sell suspicious animals. Use good sanitation to prevent human cases. The primary route is unknown but may be through the skin or respiratory system. Consult a physician as needed. Use disinfectant to clean equipment and work areas.

For further information regarding the current vesicular stomatitis outbreak in general, contact the Livestock Disease Reporting Unit at (303) 784-6215. The Colorado state veterinarians are Drs. Jerry Bohlender and Wayne Cunningham, located in Denver. The phone number is (303) 239-4161.



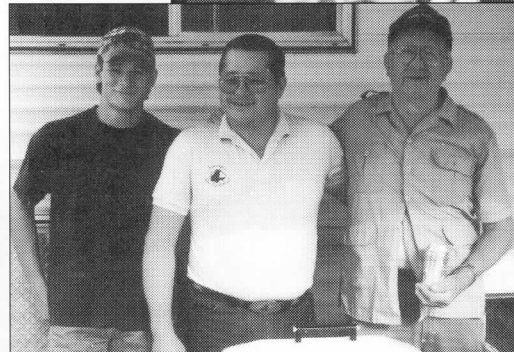
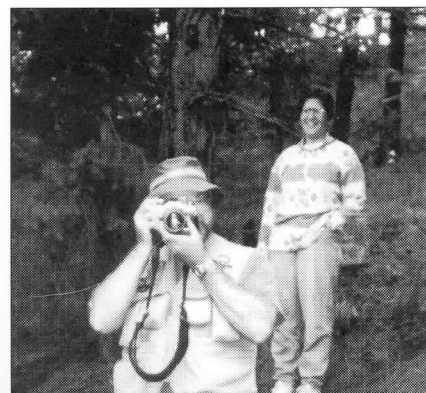


**Above,** Judges Patsy Conner (left) and Ron Pappan, DVM wait for the next onslaught of riders to check-in at the Region 3 Benefit/Top of the World Ride.

**Steward** Neal McKinstry and judge's secretary Kris Cummings were driven around the ranch in four-wheel-drive luxury.



# Top World



**Top right:** Top of the World competitors saw ace photographer Michael Fulks several times throughout the weekend.

**The Farmington Chefs** kept the troops fed. Warming up for the next onslaught are (from left) Buddy Smith, Bill Smith and Bob Santistevan.

## Recognition awards *nominations*

**LAST CALL** for nominations to select the Region 3 members you think have contributed greatly to NATRC on both national and regional levels. Response has been minimal, so c'mon, get your choices mailed to Joyce Calhoun, 761 West El Portal, Pueblo West, CO 81007 (719) 547-3152. You have 'til the first part of October only!

### NATIONAL APPRECIATION AWARD

**Name of nominee:** \_\_\_\_\_

*Why I think this person has earned consideration for the NATRC National Appreciation Award:*

---

---

---

---

---

---

---

---

Name/address (optional): \_\_\_\_\_

---

---

### REGION III APPRECIATION AWARD

**Name of nominee:** \_\_\_\_\_

*Why I think this person has earned consideration for the Region III Appreciation Award:*

---

---

---

---

---

---

---

---

Name/address (optional): \_\_\_\_\_

---

---

### SUSAN G. BRETAG SERVICE AWARD

**Name of nominee:** \_\_\_\_\_

*Why I think this person has earned consideration for the Susan G. Bretag Service Award:*

---

---

---

---

---

---

---

---

Name/address (optional): \_\_\_\_\_

---

---

# BITS AND PIECES

## Region III renewal/newsletter subscription

If you haven't renewed your Region III membership, the cutoff date for receiving the *Region 3 Newsletter* will be June 1 of the same year. National only members will receive two complementary newsletters unless they join Region III.

## Eligibility for Region III year-end awards

All national NATRC members who are dues-paying members to Region III NATRC are eligible for regional placings and awards. Requirements: Open horses and riders must enter three (3) rides per season and accumulate a minimum of 30 points to be eligible for year-end placings. Open horses/riders will be eligible for the Ruth Tyree High Average Horsemanship and Ken Burkdoll Combined High Average Horse/Rider awards if they enter a minimum of six (6) regional rides. All rides started (same rider and horse) will be counted. Competitive Pleasure horses and riders must enter two (2) rides per season and accumulate a minimum of 20 points to be eligible for year-end placings. Competitive Pleasure horses and riders will be eligible to compete for the High Average Combined Horse/Rider award but must enter a minimum of four (4) rides per season. The top horse in Competitive Pleasure shall be considered as a sweepstakes horse within the class and shall receive 2 additional points as done in the Open and Novice divisions. Novice horses and riders must enter two (2) rides per season and accumulate a minimum of 12 points to be eligible for year-end awards. Horses and riders receive 4 points for ride completion and a sweepstakes horse receives 2 points (18).

## Memo to ride managers

Ride managers are requested to send the ride results to national within two weeks after the ride. Region III rider fees should be sent at the same time to the point chairman.

## Verification of points and mileage

The point secretary keeps all Region III members' points and mileage each year. You must submit your own horse/rider mileage to the national mileage chairman for national NATRC records. Please verify points (after figuring your own, first) with the chairman by Dec. 1 of the current year, otherwise you must accept the points as calculated. Region III NATRC members who have not renewed their memberships by Mar. 1 of each year will have to pay an additional \$15 secretarial fee if they wish to have either their horse or rider points and mileage recorded. Contact Pat Jubb, 3455 Hartsock Lane, Colorado Springs, CO 80917, (719) 574-8522.

## Breed award eligibility

It is the responsibility of the rider to provide a copy of horse's registration papers with the ride entry to be eligible for breed awards at each ride. The papers will be returned to rider the day of the ride.

## Computerized membership mailing labels offered

Joyce Calhoun has the responsibility of the mailing labels various Region III activities. Her database can be categorized by districts, zip codes and includes people who have ridden in the past two years. They can be helpful to solicit participants for Region III NATRC events. Note to ride managers: Submit requests for rider lists with ample time for Joyce to prepare them, not at the last minute, please! The fee is \$5. Contact Joyce Calhoun at 761 W. El Portal, Pueblo West, CO 81007 (719) 547-3152.

## When paying for newsletter advertising or mailing labels ...

When you use Joyce Calhoun's services for mailing labels, or if you are paying for an ad in the *Region 3 Newsletter*, please make your check out to NATRC/Region III.

## Ride critiques in Region III

Everyone in Region III benefits when you take the time to fill out and return the ride critique form included in the rider's packet, thank you.

## Deluxe English Cattle Bags

Price: \$55

Shipping/insurance: \$5

## Collapsible Buckets

Price: \$13

Shipping/insurance: 3

## Pommel/Wither Bag

Bag only: \$65

Bag/2 water bottles: \$70

Bag/2 water bottles/snap on

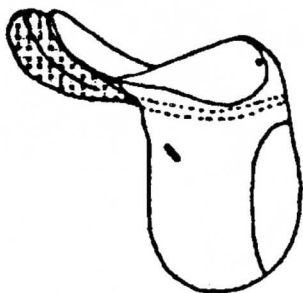
heart monitor pocket: \$80

Shipping/insurance: \$8

## Haunch Heater

Price: \$55; Ship./ins.: \$5

With removable Polar Plus lining: \$105; Ship./ins.: \$8



## People Slicker (over 40 colors)

Slicker only: \$105

Slicker/Hood: \$120

Slicker/Hood/Stuff sack: \$130

Detachable cape: \$40

Shipping/insurance: \$8

Aussie style: \$205

Shipping/insurance Aussie: \$10



## Troxel EQ Helmets

Available in black or white

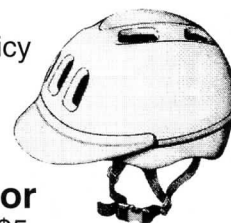
2-year limited warranty

Lifetime Impact Replacement Policy

Price: \$45 white or \$50 black

See-thru, wide visor: \$10

Shipping/insurance: \$5



## V-Max Basic Heart Monitor

Price: \$195; Shipping/insurance: \$5

**OVELL  
OF MACK**

Box 243, 647 "R" Road  
Mack, CO 81525-9724  
(970) 858-7323

Call or  
write  
for a  
free  
catalog

**Note:** Teri Jurgens is available to take your orders now. Her address is 12980 N. Foothills Hwy. in Longmont, Colo., and she can be reached at (303) 823-0111.

# NATRC Membership Application

NATRC offers six membership plans (check plan desired):

- |  |  |
|--|--|
| <input type="checkbox"/> 1. FAMILY membership          | (\$35 per year) Household of one or two adults and children (one vote) |
| <input type="checkbox"/> 2. SENIOR membership          | (\$30 per year) Single adult member (one vote)                         |
| <input type="checkbox"/> 3. JUNIOR membership          | (\$20 per year) Single junior member under age 18 (no vote)            |
| <input type="checkbox"/> 4. ASSOCIATE membership       | (\$45 per year) Equine-related groups or businesses (no vote)          |
| <input type="checkbox"/> 5. SINGLE lifetime membership | (\$250) Any person of any age (one vote)                               |
| <input type="checkbox"/> 6. FAMILY lifetime membership | (\$350) Household of one or two adults and children (two votes)        |

**Membership is for twelve months from date of receipt**

All NATRC memberships include: rule book, membership card, club patch, ride schedule, newsletter, eligibility to compete for NATRC annual high score awards and championships, rider and horse mileage awards and reduced ride entry fees.

PLEASE LIST ALL FAMILY MEMBERS

Name(s) \_\_\_\_\_

Street \_\_\_\_\_ City, State, Zip \_\_\_\_\_

Phone (\_\_\_\_) \_\_\_\_\_ Birthdate of junior(s) \_\_\_\_\_ \$ enclosed \_\_\_\_\_

## NATRC Specialties\*

- |  |                           |
|--|---------------------------|
| <input type="checkbox"/> Lapel Pin   | \$3.00                    |
| <input type="checkbox"/> Patch (incl. w/ membership)   | \$1.75                    |
| <input type="checkbox"/> Poster  | \$1.00                    |
| <input type="checkbox"/> 10" Decal   | \$2.00                    |
| <input type="checkbox"/> 4" Decal  | 2 for \$1.50              |
| <input type="checkbox"/> Bumper Stickers   | \$1.50                    |
| 2 for \$2.75; 3 or more \$1.25 ea.   |                           |
| <input type="checkbox"/> Hat   | \$4.50 + \$2 P&H 1-5 hats |
| <input type="checkbox"/> Jacket  | \$30.00 + \$3 P&H         |
| Sizes: <input type="checkbox"/> S34-36 <input type="checkbox"/> M38-40 <input type="checkbox"/> L42-44 <input type="checkbox"/> XL 46-48 |                           |

## NATRC Manuals\*

- |  |        |
|--|--------|
| <input type="checkbox"/> Rule Book (incl. w/ membership) | \$2.00 |
| <input type="checkbox"/> Judge's Manual                  | \$5.00 |
| <input type="checkbox"/> Rider's Manual                  | \$4.00 |
| <input type="checkbox"/> Management Manual               | \$4.00 |
| (plus P&H, 1-3 manuals)                                  |        |

## NATRC Videos\*

- |   |         |
|---|---------|
| <input type="checkbox"/> Vet Judge Video    | \$20.00 |
| <input type="checkbox"/> Horsemanship Video | \$20.00 |
| <input type="checkbox"/> Both Videos        | \$35.00 |

**Contributions to NATRC are tax deductible.** If you wish to show your added support by contribution to our Foundation, Awards, Student Loan or General Funds, please increase the amount of your payment and direct how you wish it to be used.

☐ \$10 ☐ \$25 ☐ \$ Other

How did you learn about NATRC?

\* All prices subject to change without notice, all manuals available to anyone, regardless of membership

**Make checks payable to NATRC (U.S. funds only) and mail to**

**NATRC, P.O. Box 2136, Ranchos de Taos, NM 87557-2136 – (505) 751-4198**

Former membership information

**1-95/REGION 3**

## REGION 3 NEWSLETTER

*North American Trail Ride Conference*

Iris Mosgrove

10590 Egerton Rd.

Colorado Springs, CO 80908

**ADDRESS CORRECTION REQUESTED**