

# Region 3

JULY/AUGUST • 1995

## Trails losing out to development

*by Judi Tobias*

**G**OING TO COMPETITIVE TRAIL RIDES THIS year sure shows you how we're losing our open space. Turkey Track's camp is slated to be a housing development by next year. Georgia Daves says that the Parks officials have promised to build a horse-camping area, but they aren't sure when. Any of you folks in the Albuquerque area need to keep talking to your public officials and let them know that you really want that horse camp!

At the Cavalier Ride, everyone was appalled at the encroachment of houses (lots of them) at the Air Force Academy. Sure isn't a pretty sight.

The stories of lost trails and lost camping facilities goes on and on. One of the problems for horse people, is that you can't park a truck or trailer in the same size space you can a compact car. We need to keep reminding our parks and open space planners of this fact. Trails don't do any good if they can't be accessed.

One positive note is that the American Horse Council (AHC) lobbyists are working hard to free up \$30 million per year that was allocated in 1992 for trails, but has never been appropriated. The AHC wants Congress to give the states some autonomy in spending this money on a long-term basis instead of having to ask Congress for the money each year (and we all know how slow Congress is in making decisions on money!) to afford some continuity in trail planning and development. The

money is for construction and maintenance of multi-use trails which will benefit ALL trail users. So, let's support the AHC in their role as member of the Coalition for Recreational Trails. One way we can do this is to talk to our state horse council representatives about this issue. Also, if you have a Congressman who is on the House appropriations Transportation Subcommittee, let him know you want him to support trails funding.

### Blue skies appear over Rabbit Valley

**O**ne of the first rides of the Region III season is held in the wild reaches of the Western Slope of Colorado. Great sandstone cliffs tower and the Colorado River surges below the trail on the Rabbit Valley Ride. Judges Larry Bentley and Jackie Coleman – as well as the riders – were awed by this “Zane Grey” landscape as they spent the last weekend in April riding through it.

Lovell Sasser and her crew kept the ride efficiently organized so that the riders and judges could enjoy their weekend. And, after weeks of Colorado's stormy spring weather, everyone finally saw blue skies and dry trails. It was a ride to celebrate. – *Judi Tobias*

# Region 3

The *Region 3 Newsletter* is published bi-monthly and mailed to all current Region 3 members. It is available by subscription to non-Region 3 members for \$8 per year. Requests and payment for subscriptions should be sent to Iris Mosgrove, 10590 Egerton Road, Colorado Springs, CO 80908.

Your typed contributions of articles and other information are appreciated! NATRC and the *Region 3 Newsletter* do not necessarily endorse or support opinions expressed in letters, articles or advertisements. No unsigned letters will be published. Region 3 reserves the right to edit or to refuse publishing a letter. Articles may be re-used provided attribution is given.

**The 1995 deadline/distribution dates are:** Jan./Feb. issue-copy deadline Jan. 15, distribution Jan. 30; Mar./Apr. issue-copy deadline Mar. 15, distribution Mar. 30; May/Jun. issue-copy deadline May. 15, distribution May 30; Jul./Aug. issue-copy deadline Jul. 15, distribution Jul. 30; Sep./Oct. issue-copy deadline Sep. 15, distribution Sep. 30; and Nov./Dec. issue-copy deadline Nov. 15, distribution Nov. 30.

Display advertising rates: Full page (7 1/2" x 9 7/8"), \$50; half-page (7 1/2" x 4 15/16"), \$30; quarter-page (3 3/4" x 4 15/16"), \$15; eighth-page or business card (2 1/2" x 3 1/4" or 3 3/4" x 2 7/16"), \$10. Ad rates are per issue and must be camera-ready (including photos). Ads ran in five consecutive issues appear a sixth time free. Pre-printed full-page flyers ready for insertion are \$35 per issue and must be received 5 days in advance of distribution deadline. **Barn Sale unclassified rates:** Members: \$5 per ad, non-members: \$6 per ad.

Send all letters, ads, articles, photos, etc. to: Lisa Sowell, 8150 West 111th Ave., Broomfield, CO 80021, (303) 465-3621.

## 1995 Region III Board of Directors

Karen Laden	President & At Large
Dee Overholt	Vice Pres. & At Large
Nancy Reinhardt	Secretary & At Large
Lois Arbour	At Large
Matt Baker	D-3
Dan Fredal	At Large
Kathryn Hayes	D-5
Larry Keckler	At Large
Neal McKinstry	D-6
Ike Mosgrove	D-2
Susan McKelvy	Past President
Joyce Calhoun	Nat'l. board/R3 Treasurer
Jill Talbot Hicks	Nat'l. board
Judi Tobias	Nat'l. Board

# President's Message

**Karen Laden, Region III President**

**G**reetings! Just a few key points I want to bring to your attention. It's time once again to accept nominations for the Region III board of directors. You will soon receive a postcard from Nomination Committee Chair Judi Tobias (719) 593-7310 asking you to consider running for the board. Five positions are currently open: D-2 (Colorado Springs area), D-6 (Grand Junction area) and three at-large seats.

The board is committed to run a slate of candidates for the at-large positions who represent areas outside the heavily-represented Colorado Springs/Denver area. However, WE CAN ONLY OFFER A SLATE OF PEOPLE WHO VOLUNTEER TO RUN. OTHERWISE WE HAVE TO FILL THE SLATE WITH WILLING MEMBERS, WHEREVER THEY RESIDE! So please consider throwing your hat into the ring. Call Judi for more information.

The Region III seminar is scheduled for Saturday, Jan. 13, 1996, in Grand Junction. This year's event will have a slightly different twist. It will start at noon with the general membership meeting. At that time, the board will present its recommendation for re-districting the region to the members present. One informative seminar will follow after the meeting. The awards banquet will follow that evening. The new and old board will meet for their transitional meeting on Sunday. We chose January for two reasons: to include points from the David B. Thomas ride, but keep it "closer" to the end of the ride year, as members have requested. Why Grand Junction? Based on member input, the board is committed to move regional functions around to ALL areas of the region where members reside.

Finally, the board clarified the region's standing rules in regard to Region III rider fees at the June board meeting. Basically, the board voted that ride management is responsible for collecting rider fees and paying them to Region III. Also, Region III points (rider, horse and worker) would not be awarded for a ride that did not pay its regional fees. Why? Three of the four dollars the region collects from each rider supports the region's national board members, who in turn operate NATRC – providing ride insurance, ride sanctions, judges, etc. Like the relationship between a light bulb and a switch, if you don't have the switch (regionally supported national board members), then the light (NATRC) won't work.

If you have questions about any of these actions, please call (719) 495-3892. but do it *before the clock strikes 9 p.m.* when I become "Karen the Grouch." – *As ever, your faithful servant, Karen*

## NATRC leader passes on

**A** constant star in the firmament of NATRC is gone. Bev Tibbitts died of cancer recently. Many people will say and write much about her contributions to our sport, but I would like to remember her as a friend and mentor, as I'm sure she was to many of us – particularly horsemanship judges.

I apprenticed my first ride under Bev. It wasn't easy – she was very demanding, but I'm sure that learning to judge under her tutelage made me a better judge. She as as demanding of herself as she was of others – perfection was her standard. I respected her because as far as competitive trail went, she "walked the walk." In a sport dominated by Arabians, she won NATRC's ultimate award, the President's Cup – first on a grade horse and then again on an Appaloosa.

But Bev wasn't all serious. With her pixie face, gamin grin and wry humor, she usually reminded me of a leprechaun – especially when she donned her green camouflage. I always thought that she had more than a touch of Irish in her family tree. So, I'll leave her with an Irish blessing; "Bev, may the road rise up to meet you, may the breeze blow gently on your back, and may the Lord hold you in the hollow of his hand until we meet again." – *Judi Tobias*



**WAITING AT A WARMING FIRE** for the next group of horses to come through a P&R check at the Colorado Trail Ride are: Clare Gamble (far left), chairman Tom Butterfield (far right) – and unidentified shivering workers in the middle – wishing for marshmallows and hot chocolate! – Photo Sue McKelvy

## El Jinete cancellation

Because of the recent outbreak of vesicular stomatitis in the Four Corners area, the El Jinete Solitario ride held near Durango, Colo., has been cancelled. El Jinete certainly ranks among the top rides in the region for scenic beauty and rugged challenges. We look forward to seeing it back again next year!

As for the four remaining rides left in the season, please contact ride management to check for updated cancellation information before making plans to attend them.

See related story on page 5 – 1.

## Recognition awards *nominations*

*Important information from Joyce Calhoun, National Board of Directors*

**O**nce again it is time to consider nominees for the **National Appreciation Award** (for years of outstanding service to NATRC), the **Region III Appreciation Award** (for outstanding service to Region III, awarded at the National Convention) and the **Susan G. Bretag Service Award** (also for outstanding service to Region III, awarded at our own Regional Convention). Last year's recipients were Michele Glover, Nancy Moss and Heidi Blonigan for the National Appreciation Award; Dee Overholt and Sue McKelvy for the Region III Appreciation Award; and Lisa Sowell for the Susan G. Bretag Service Award.

Please return the nomination forms to me by Oct. 1, 1995, for presentation to the National Board of Directors.

Mail **ASAP** to Joyce Calhoun, 761 West El Portal, Pueblo West, CO 81007 (719) 547-3152

NATIONAL APPRECIATION AWARD	REGION III APPRECIATION AWARD	SUSAN G. BRETAG SERVICE AWARD
<b>Name of nominee:</b>	<b>Name of nominee:</b>	<b>Name of nominee:</b>
<i>Why I think this person has earned consideration for the NATRC National Appreciation Award:</i>	<i>Why I think this person has earned consideration for the Region III Appreciation Award:</i>	<i>Why I think this person has earned consideration for the Susan G. Bretag Service Award:</i>
<hr/> <hr/> <hr/> <hr/> <hr/> <hr/> <hr/>	<hr/> <hr/> <hr/> <hr/> <hr/> <hr/> <hr/>	<hr/> <hr/> <hr/> <hr/> <hr/> <hr/> <hr/>
Name/address (optional):	Name/address (optional):	Name/address (optional):
<hr/> <hr/>	<hr/> <hr/>	<hr/> <hr/>



# Trails program to sponsor workshops

## *Funding and backcountry issues*

**O**ne of the great things about Colorado is that we *do* have money for trails. The OHV registration program brings in funds specifically for motorized trails, and Great Outdoors Colorado is funding grants for the whole spectrum of trail activities. Both programs have been a great success, and we feel it's time to reach out for new projects and ideas.

This summer we'll be holding workshops in several areas of Colorado to ask a number of questions:

- How can we encourage the BLM and Forest Service to work on cooperative projects with trail groups, OHV clubs and other volunteers?
- How can we help clubs, agencies and counties develop good projects and apply for OHV and State Trails Program funds?
- How can we encourage cooperation among motorized and non-motorized trail users in trail construction and maintenance projects.
- What back-country issues and needs can we help address with the grants programs?

Locations and dates for the workshops are being considered. If you have any questions or suggestions, or if you'd like to host one of the regional meetings, we'd like to hear from you. — *Stuart Macdonald, State Trails Program*

## ANNOUNCING THE THIRD ANNUAL NATRC *Golden Gate Competitive Trail Ride*

*Sponsored by the Colorado Arabian Horse Club*

**S**addle up for high adventure in the Front Range wilderness. Treat yourself to colorful, golden aspen meadows and scenic mountain vistas about an hour's drive northwest of Denver.

Join us for a fun-filled weekend at Golden Gate State Park on Sept. 16-17, 1995. The CAHC-sponsored ride offers nearly 60 miles of trails once used by Indians, trappers and hapless gold miners. You will be staying at Reverend's Ridge Campground — offering heated

indoor bathrooms and hot showers. Western-style suppers will be offered on Friday and Saturday night.

Get your favorite trail horse in condition this summer, and be ready this fall for lots of fun. Arabian and half-Arabian breed awards will be up for grabs, as well as other awards.

For additional information, contact ride manager Donna Schriefer at (303) 462-0828 or ride secretary Lisa Sowell at (303) 465-3621. Happy trails!



## Uncompahgre introductory ride

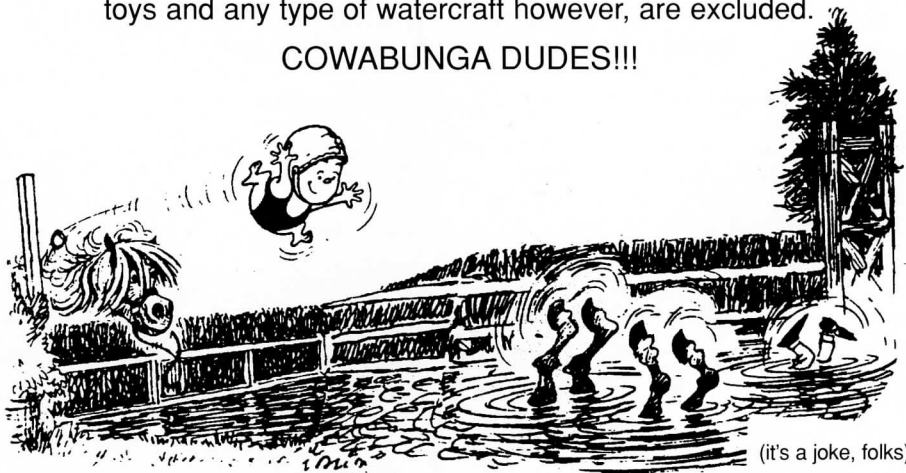
**N**eal McKinstry would like to pass along some news about a fairly easy 20-mile loop ride to be held on Aug. 13, 1995 (check-in Aug. 12). This trail goes from Cactus Park onto the Uncompahgre Plateau, with the elevation ranging from 6,100' to 7,500'. Mostly, this ride is designed to acquaint riders with competitive trail riding and the International Arabian Horse Association's "local" rules. The ride is limited to 30 riders. It is sponsored by the ColoWest Arabian Horse Club.

If you are relatively new to the sport, or know of someone who would like to get their feet wet, this sounds like a great opportunity. Contact Neal at (970) 858-9042 or Lisa Binse (secretary) at 243-8543 or additional information.

### ATTENTION COMPETITORS!

Due to the rather damp conditions on course, wetsuits, flippers and diving gear are being included as acceptable equipment. Inflatable toys and any type of watercraft however, are excluded.

COWABUNGA DUDES!!!



*Judi Tobias sent this along to share as "The most accurate comment on the Cavalier Ride you'll get! That, and Brrrrr from the P&R teams who did Telegraph Hill Saturday afternoon!"*

*Get the Bumps Out of Your Ride*



**S**MOOTH  
PEED  
TAMINA



**TENNESSEE WALKERS**

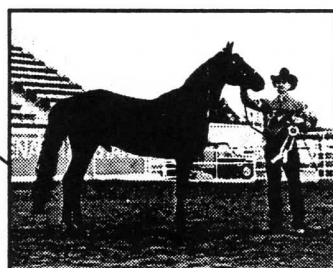
*The Ride of Your Life*



**Grandson of Carbon Copy**

**STANDING AT STUD**

**\$350.00**



- 1992 - 1993 - GET OF SIRE CHAMPION
- 1993 HWWA RES. YEARLING STALLION
- 1993 HWWA FUTURITY RES. GRAND CHAMPION YEARLING (TX)
- 1994 RES. GRAND CHAMPION 2 YEAR OLD (UT)



*Sugar Jets Pride*

- 1993 TWH VERSATILITY HONOR ROLL COMPETITIVE TRAIL
- 1994 GRAND CHAMPION MODEL (UT)

*In foal to Copy's Talk of Texas*

### **BREEDING FOR VERSATILITY**

- Show
- Pleasure
- Competitive Trail
- Pleasure Trail

**It's Black OR White**

**Flying Walker Ranch**

**Kary and Terry Woltman**

27676 E. Jewell Ave. • Aurora, CO 80018  
(303) 367-5257 • (303) 363-6636

## **Vesicular stomatitis bulletin**

**O**n Tuesday, June 27, the New Mexico Livestock Board announced a new 'Restricted Zone' for the movement of all livestock that might be affected by vesicular stomatitis – horses, sheep, cattle and swine.

"A new, no-movement zone was established for ten miles on either side of the Rio Grande, extending from Hwy. 44 on the north to US Hwy. 380 on the south. There is to be no movement of livestock, either intra-state or inter-state, and all events where animals could congregate within the restricted zone are cancelled.

"The number of VS-positive premises identified within this area has already effectively closed the area to interstate travel. This move is to contain the disease to the smallest area possible, while at the same time protecting the interests of the State's livestock producers."

John Wortman, Executive Director – *From the Horseman's Voice*

## **The Active Member**

*Are you an active member  
The kind that would be missed?  
Or are you just contented  
That your name is on the list?*

*Do you attend the meetings  
And mingle with the flock?  
Or do you meet in private  
And criticize and knock?*

*Do you take an active part  
To help the work along,  
Or are you satisfied to be  
The kind who just belong?*

*Do you work on committees?  
To this there is no trick.  
Or leave the work to just a few,  
And talk about the clique?*

*So come to meetings often,  
And help with hand and heart.  
Don't just be a member,  
But take an active part.*

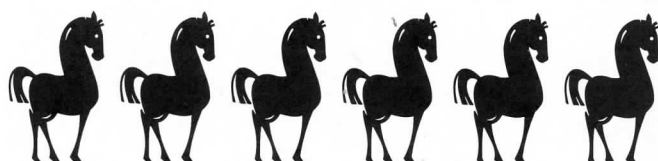
*Think this over brother,  
You know what's right from wrong.  
Are you an active member,  
Or do you just belong?*

– Author unknown

## **Colorado Horse Rescue needs volunteers**

**W**e need volunteers who would like to help us do pre-checks of adopter facilities and follow-up visits on our adopted horses. We are especially in need of people to go to outlying areas – anywhere from one to four, or more, hours travel time from Denver.

This is a very important part of our adoption program to ensure that horses are placed properly into new homes. If you would be willing to take part in this process, please contact Liz Seib at (303) 841-8050 for more information.



# NATIONAL BOARD HIGHLIGHTS

**O**n the weekend of July 8, the national board met in Kansas City. After the meeting on Saturday, Lucy Hirsch, DVM, hosted a barbeque at her home just outside of Kansas City. Twenty-plus members of Region 6 were there to greet us and Lucy gave rides in her brand new surrey with her competitive horse. We all had a very nice time and appreciated their Midwestern hospitality. The next board meeting will be hosted in Colorado Springs on the weekend of Nov. 11-12. We are planning a similar gathering in which Region 3 members can demonstrate their Western hospitality. This would be a good chance for all of you to meet and talk with the national board members in an informal setting. Everyone is welcome to attend the national board meetings and we will pass along all the information as soon as it is all arranged.

Among the most-discussed issues: Insurance continues to be a lengthy topic of discussion and a committee has been formed to report back with objectives, questions and needs so that by the '96 ride season we will hopefully have an affordable policy for rides to purchase that will offer more liability protection than in the past. This committee needs to know about any special coverages that are required for individual rides, (i.e., specific requests by parks, landowners, public land officials, etc.) before they can be written. If any ride managers know of special conditions that will be required in the future, please contact one of us so it can be passed on to the special committee.

The Horsemanship Judge apprentice list will include our own Janine Ancell's name in the future.

The board unanimously voted to reconsider Janine as an apprentice judge for horsemanship. Good luck, Janine!

The regional and national board nominations will be going out in September, so please remember to VOTE!!! Each one counts! If you are interested in running for either the regional or national board, please contact Joyce, Jill or Judi (your current national representatives). They must be received by the appropriate individuals by Sept. 1, so we need them by Aug. 28 at the latest. Also look for the National, Regional and Susan G. Bretag Award nomination form on page 3 of this newsletter. Submit your nominations for these awards to me ASAP.

The national board voted to reimburse Region 3 for the \$480 lease for Section 16 in the Colorado Springs area. This section was in danger of being developed commercially if we did not act on it quickly. Several options for this unspoiled area are being looked at for the future by the planning board.

The Championship Challenge ride date has been changed to Oct. 21-22, because no other rides in the nation were scheduled on this date. It sounds like it is going to be a great ride, with wonderful awards. A saddle has been donated, as well as a week a a condo in Vail, and possibly a trailer! Also, they are proposing an additional division call the Dream Team that will be optional. Look for further information in the next issue of *Hoof Print* due out next month.

The proposal for allowing corrals as opposed to tying to the trailer at rides was discussed and it was decided that there were just too many objections at this time to consider it.

Instead, Judy Jesse, Region 5, is looking into picket lines using our own horse trailers. She is going to do some research and submit a proposal with solid, safe methods of employing this method of containing our horses. If you have any thoughts or suggestions from personal experience, please let us know.

In the recent past, there have been many comments concerning riders wanting to leave earlier on Sunday, riders who do not want to weigh in with tack, having to drip the minimum weight requirement to accommodate a few, the number of open riders decreasing, few to no junior competitors, complaints of CP needing weight classes and wanting to go at a faster pace or longer distance, etc. These concerns are being addressed and a proposal is underway that may or may not solve all these concerns. As soon as more details are worked out it will be put out to the regions for their input. This is a huge undertaking and will not be done lightly, so keep reading your regional/national newsletters to keep abreast of new news. Use the Feedbag section of *Hoof Print* to voice your opinions or else contact one of us.

If you have any questions, comments, etc., please contact current national board representatives Joyce Calhoun, Jill Hicks or Judi Tobias. You can find our names, addresses and telephone numbers on the inside front cover of any *Hoof Print* or in your new Region 3 membership directory. And don't forget to put the November national board meeting on your calendars! - *Joyce Calhoun (719) 547-3152*



**JET Arabian Ranch, Inc.**

*For Sale, Purebred Arabians  
for Show and Long-Distance Sports*

**Home of "Fyre Kracher" - Polish Stallion**

Jill Talbot Hicks 858 Marshall Road  
Jeff Hicks Boulder, CO 80303  
303/494-2531

## Region 3 Finance Report - 6/22/95

### ASSETS

Checking account	\$ 6,090.21
Sue Bretag account	4,267.09
Ken Burkdoll account	780.01
Ruth Tyree account	700.65
<b>Total cash/bank accounts</b>	<b>\$ 11,837.96</b>



# BITS AND PIECES

## Region III renewal/newsletter subscription

If you haven't renewed your Region III membership, the cutoff date for receiving the *Region 3 Newsletter* will be June 1 of the same year. National only members will receive two complementary newsletters unless they join Region III.

## Eligibility for Region III year-end awards

All national NATRC members who are dues-paying members to Region III NATRC are eligible for regional placings and awards. Requirements: Open horses and riders must enter three (3) rides per season and accumulate a minimum of 30 points to be eligible for year-end placings. Open horses riders will be eligible for the Ruth Tyree High Average Horsemanship and Ken Burkdoll Combined High Average Horse/Rider awards if they enter a minimum of six (6) regional rides. All rides started (same rider and horse) will be counted.

Competitive Pleasure horses and riders must enter two (2) rides per season and accumulate a minimum of 20 points to be eligible for year-end placings. Competitive Pleasure horses and riders will be eligible to compete for the High Average Combined Horse/Rider award but must enter a minimum of four (4) rides per season. The top horse in Competitive Pleasure shall be considered as a sweepstakes horse within the class and shall receive 2 additional points as done in the Open and Novice divisions. Novice horses and riders must enter two (2) rides per season and accumulate a minimum of 12 points to be eligible for year-end awards. Horses and riders receive 4 points for ride completion and a sweepstakes horse receives 2 points (18).

## Memo to ride managers

Ride managers are requested to send the ride results to national within two weeks after the ride. Region III rider fees should be sent at the same time to the point chairman.

## Verification of points and mileage

The point secretary keeps all Region III members' points and mileage each year. You must submit your own horse/rider mileage to the national mileage chairman for national NATRC records. Please verify points (after figuring your own, first) with the chairman by Dec. 1 of the current year, otherwise you must accept the points as calculated. Region III NATRC members who have not renewed their memberships by Mar. 1 of each year will have to pay an additional \$15 secretarial fee if they wish to have either their horse or rider points and mileage recorded. Contact Pat Jubb, 3455 Hartsock Lane, Colorado Springs, CO 80917, (719) 574-8522.

## Breed award eligibility

It is the responsibility of the rider to provide a copy of horse's registration papers with the ride entry to be eligible for breed awards at each ride. The papers will be returned to rider the day of the ride.

## Computerized membership mailing labels offered

Joyce Calhoun has the responsibility of the mailing labels various Region III activities. Her database can be categorized by districts, zip codes and includes people who have ridden in the past two years. They can be helpful to solicit participants for Region III NATRC events. Note to ride managers: Submit requests for rider lists with ample time for Joyce to prepare them, not at the last minute, please! The fee is \$5. Contact Joyce Calhoun at 761 W. El Portal, Pueblo West, CO 81007 (719) 547-3152.

## When paying for newsletter advertising or mailing labels ...

When you use Joyce Calhoun's services for mailing labels, or if you are paying for an ad in the *Region 3 Newsletter*, please make your check out to NATRC/Region III.

## Ride critiques in Region III

Everyone in Region III benefits when you take the time to fill out and return the ride critique form included in the rider's packet, thank you.

## Deluxe English Cattle Bags

Price: \$55

Shipping/insurance: \$5

## Collapsible Buckets

Price: \$13

Shipping/insurance: 3

## Pommel/Wither Bag

Bag only: \$65

Bag/2 water bottles: \$70

Bag/2 water bottles/snap on

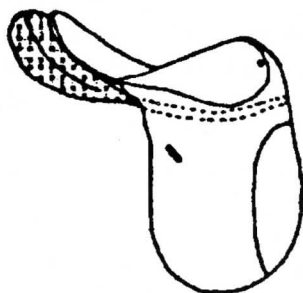
heart monitor pocket: \$80

Shipping/insurance: \$8

## Haunch Heater

Price: \$55; Ship./ins.: \$5

With removable Polar Plus lining: \$105; Ship./ins.: \$8



## People Slicker (40 to 50 colors)

Slicker only: \$105

Slicker/Hood: \$120

Slicker/Hood/Stuff sack: \$125

Detachable cape: \$40

Shipping/insurance: \$8

Aussie style: \$205

Shipping/insurance Aussie: \$10

## Troxel EQ Helmets

Available in black or white

2-year limited warranty

Lifetime Impact Replacement Policy

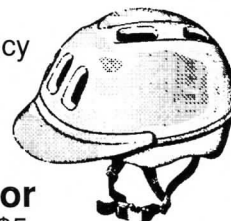
WHITE LOW - \$45

See-thru, wide visor: \$10

Shipping/insurance: \$5

## V-Max Basic Heart Monitor

Price: \$190; Shipping/insurance: \$5



**OVELL  
OF MACK**

Box 243, 647 "R" Road  
Mack, CO 81525-9724  
(970) 858-7323

Call or  
write  
for a  
free  
catalog

**Note:** Teri Jurgens is available to take your orders now. Her address is 12980 N. Foothills Hwy. in Longmont, Colo., and she can be reached at (303) 823-0111.

# NATRC Membership Application

NATRC offers six membership plans (check plan desired):

- |  |  |
|--|--|
| <input type="checkbox"/> 1. FAMILY membership          | (\$35 per year) Household of one or two adults and children (one vote) |
| <input type="checkbox"/> 2. SENIOR membership          | (\$30 per year) Single adult member (one vote)                         |
| <input type="checkbox"/> 3. JUNIOR membership          | (\$20 per year) Single junior member under age 18 (no vote)            |
| <input type="checkbox"/> 4. ASSOCIATE membership       | (\$45 per year) Equine-related groups or businesses (no vote)          |
| <input type="checkbox"/> 5. SINGLE lifetime membership | (\$250) Any person of any age (one vote)                               |
| <input type="checkbox"/> 6. FAMILY lifetime membership | (\$350) Household of one or two adults and children (two votes)        |

**Membership is for twelve months from date of receipt**

All NATRC memberships include: rule book, membership card, club patch, ride schedule, newsletter, eligibility to compete for NATRC annual high score awards and championships, rider and horse mileage awards and reduced ride entry fees.

PLEASE LIST ALL FAMILY MEMBERS

Name(s) \_\_\_\_\_

Street \_\_\_\_\_ City, State, Zip \_\_\_\_\_

Phone (\_\_\_\_) \_\_\_\_\_ Birthdate of junior(s) \_\_\_\_\_ \$ enclosed \_\_\_\_\_

## NATRC Specialties\*

- |  |              |
|--|--------------|
| <input type="checkbox"/> Lapel Pin                   | \$3.00       |
| <input type="checkbox"/> Patch (incl. w/ membership) | \$1.75       |
| <input type="checkbox"/> Poster                      | \$1.00       |
| <input type="checkbox"/> 10" Decal                   | \$2.00       |
| <input type="checkbox"/> 4" Decal                    | 2 for \$1.50 |
| <input type="checkbox"/> Bumper Stickers             | \$1.50       |
| 2 for \$2.75; 3 or more \$1.25 ea.                   |              |

- |                                 |                           |
|---------------------------------|---------------------------|
| <input type="checkbox"/> Hat    | \$4.50 + \$2 P&H 1-5 hats |
| <input type="checkbox"/> Jacket | \$30.00 + \$3 P&H         |

Sizes: ☐ S34-36 ☐ M38-40 ☐ L42-44 ☐ XL 46-48

## NATRC Manuals\*

- |  |        |
|--|--------|
| <input type="checkbox"/> Rule Book (incl. w/ membership) | \$2.00 |
| <input type="checkbox"/> Judge's Manual                  | \$5.00 |
| <input type="checkbox"/> Rider's Manual                  | \$4.00 |
| <input type="checkbox"/> Management Manual               | \$4.00 |
| (plus P&H, 1-3 manuals)                                  |        |

## NATRC Videos\*

- |   |         |
|---|---------|
| <input type="checkbox"/> Vet Judge Video    | \$20.00 |
| <input type="checkbox"/> Horsemanship Video | \$20.00 |
| <input type="checkbox"/> Both Videos        | \$35.00 |

**Contributions to NATRC are tax deductible.** If you wish to show your added support by contribution to our Foundation, Awards, Student Loan or General Funds, please increase the amount of your payment and direct how you wish it to be used.

☐ \$10 ☐ \$25 ☐ \$ Other  
How did you learn about NATRC?

\* All prices subject to change without notice, all manuals available to anyone, regardless of membership

**Make checks payable to NATRC (U.S. funds only) and mail to  
NATRC, P.O. Box 338, Sedalia, CO 80135-0338 Phone: (719) 481-8829  
Colorado residents please add 3.5% sales tax for manuals and specialties.**

Former membership information

**1-95/REGION 3**

## REGION 3 NEWSLETTER

*North American Trail Ride Conference*

Iris Mosgrove

10590 Egerton Rd.

Colorado Springs, CO 80908

**ADDRESS CORRECTION REQUESTED**