

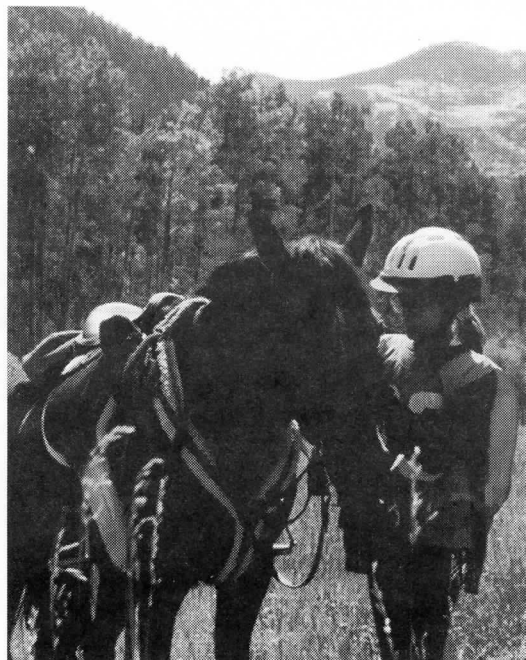
# Region 3

JANUARY/FEBRUARY • 1995

## Get ready for '95



*Rounding the bend at the Golden Gate ride (above) is Kathy Morris, Laurie Butterfield and Judy Mason. Dottie Kabel (at right) takes care of her trusty steed at the last P&R stop on Sunday. (Photos Donna Schriefer.)*



## Tentative ride and clinic schedule set for 1995

<b>Ride</b>	<b>Date</b>	<b>Contact</b>	<b>Phone</b>
Clinic at Kenlyn Arabians	March 4	Linda Fisher	(303) 364-9556
Clinic in Colo. Springs area	April	Dan Fredal	(719) 481-3071
Anasazi "B" Ride	April 22	Janine Ancell (Sec.)	(303) 247-9717
Rabbit Valley XII	April 29-30	Lovell Sasser	(303) 858-7323
Clinic at Tandem Park	May or June	Sue McKelvy	(303) 838-2531
Turkey Track	May 6-7	Georgia Daves	(505) 869-3553
Navajo Lake XXI	May 13-14	Judy Cumberworth	(505) 327-2286
Cavalier XXIII	May 27-28	Judy Mason	(719) 495-4437
Colorado Trail VII	June 10-11	Jean Boettcher	(303) 838-4736
Willow Springs "B" Ride	July 8	Dee Overholt	(303) 838-7507
El Jinete Solitario XII	July 29-30	Kathryn Hayes	(303) 884-9422
Penrose "B" Ride	August 5	Judi Tobias	(719) 593-7310
Top of the World	September 2-3	Thom Harris	(303) 838-5894
Golden Gate III	September 16-17	Donna Schriefer	(303) 278-4288
Chokecherry Canyon X	Sept. 30-Oct. 1	Calvin Reed	(505) 334-3015
David B. Thomas III "B" Ride	October 14	Terri Roberts	(505) 334-2001

# Region 3

The **Region Three Newsletter** is published bi-monthly and mailed to all current Region 3 members. It is available by subscription to non-Region 3 members for \$8 per year. Requests and payment for subscriptions should be sent to **Iris Mosgrove**, 10590 Egerton Road, Colorado Springs, CO 80908.

Your typed contributions of articles and other information are appreciated! **NATRC** and the **Region Three Newsletter** do not necessarily endorse or support opinions expressed in letters, articles or advertisements. No unsigned letters will be published. Region Three reserves the right to edit or to refuse publishing a letter. Articles may be re-used provided attribution is given.

The **1995 deadline/distribution dates are:**  
**Jan./Feb. issue**-copy deadline Jan. 15, distribution Jan. 30; **Mar./Apr. issue**-copy deadline Mar. 15, distribution Mar. 30; **May/Jun. issue**-copy deadline May. 15, distribution May 30; **Jul./Aug. issue**-copy deadline Jul. 15, distribution Jul. 30; **Sep./Oct. issue**-copy deadline Sep. 15, distribution Sep. 30; and **Nov./Dec. issue**-copy deadline Nov. 15, distribution Nov. 30.

**Display advertising rates:** **Full page** (7 1/2" x 9 7/8"), \$50; **half-page** (7 1/2" x 4 15/16"), \$30; **quarter-page** (3 3/4" x 4 15/16"), \$15; **eighth-page or business card** (2 1/2" x 3 1/4" or 3 3/4" x 2 7/16"), \$10. Ad rates are per issue and must be camera-ready (including photos). Run an ad in five consecutive issues and receive the sixth ad-run at no charge. Pre-printed **full-page flyers** ready for insertion are \$35 per issue and must be received 5 days in advance of distribution deadline.

**Barn Sale advertising rates:** Members: \$5 per ad, non-members: \$6 per ad.

**Send all letters, ads, articles, photos, etc. to:** Lisa Sowell, 8150 West 111th Ave., Broomfield, CO 80021, (303) 465-3621.

## 1995 Region III Board of Directors

Karen Laden	President & At Large
Dee Overholt	Vice Pres. & At Large
Nancy Reinhardt	Secretary & At Large
Lois Arbour	At Large
Matt Baker	D-3
Dan Fredal	At Large
Kathryn Hayes	D-5
Larry Keckler	At Large
Neal McKinstry	D-6
Ike Mosgrove	D-2
Susan McKelvy	Past President
Joyce Calhoun	Nat'l. board/R3 Treasurer
Jill Talbot Hicks	Nat'l. board
Judi Tobias	Nat'l. Board

# Divisions *versus* Districts

**H**ow many of our **Region III members really know** which district they are in? How many really care? Currently, the Region III Board of Directors are reviewing how beneficial it is to have separate districts in our region. Yes, it does help to have a district representative from each, but we are finding it harder and harder to get people from certain areas to actually *be* a representative for their part of the region.

A suggestion has been made – what if we just divide Region III into a Northern and a Southern Division, or an Eastern and Western Division, or maybe all four? There could be either two representatives elected annually from each division, or a president and vice president from each division whom are automatically on that year's regional board. Of course, we would have to have enough people bi-annually on the BOD to meet our updated Bylaw requirements.

So??? What do YOU, the members think about this? We would like to hear from the general membership concerning this matter and we will bring it up again at the General Membership meeting in Farmington on Feb. 3-4, at the regional seminar. But, for now please fill out the short questionnaire below and return it to: Jill Talbot Hicks, 858 Marshall Rd., Boulder, CO 80303. **MANY THANKS! We need your input!**

Do you like the way Region III is currently set up (with districts)? \_\_\_\_\_

What is your current district? \_\_\_\_\_

Would you like to see Region III change to divisions rather than districts? \_\_\_\_\_

If so, North and South, East and West, or all four? \_\_\_\_\_

Would you like to have board officers for each division? \_\_\_\_\_

Would you like to make it mandatory that these officers run a two-year term and automatically be members of the regional board of directors? \_\_\_\_\_

Any other thoughts or comments? \_\_\_\_\_

Name (optional) \_\_\_\_\_

**Thank you for taking the time to let us know your thoughts on this subject!**

## Region III Financial Summary

As of 12/31/94

Cash and bank accounts	
Checking	\$ 9,437.92
Ken Burkdoll	770.41
Ruth Tyree savings	692.03
Sue Bretag savings	5,437.92
<b>Total cash and bank accounts</b>	<b>\$ 16,218.69</b>

# Top of the World

The 27th Annual Top of the World ride was held Sept. 3-4, 1994 at the Butterfield's Resort Valley Ranch and Sponsored by Foxton Morgans.

The weather was gorgeous for a late summer weekend with warm to hot temperatures prevailing.

With 63 riders to start (a record for the ride) the ride was judged by veterinarian Pam Pintchuk and JoAnn Christensen. The judges had a chore trying to keep the ride timing in order – with so many riders coming into obstacles – everything went smoothly. The ten first-time riders received a special congratulations from the judges for their outstanding riding.

There were plenty of workers at the ride who did an excellent job. The quality of experienced help makes management's chore much less worrisome when they know the workers can be counted on when needed! With so many riders, it was tough to get the judges and P&R teams, including the mounted P&R teams, to the judging spots before the riders.

Saturday night's dinner was a catered treat from Safeway – fried chicken, beans and fixin's.

Prizes were donated by Lovell of Mack, the Woltmans of the Flying Walker Ranch, the Morgan Horse Assn., and Foxton Morgans. A special drawing was held for prizes that were donated by Pam Pintchuk and Angie Rubenstein. Any competitor wearing a helmet was eligible.

The Open Sweepstakes traveling trophy was won by Janine Ancell, so we'll see her back next year, when she tries to win it again!

The rider vest deposits were donated to the grateful North Fork Volunteer Fire Dept., who wishes to thank all who donated.

Mike Fulks was on hand again this year to take excellent photographs. Anybody who missed picking theirs up can contact Thom Harris (303) 838-5894 or Lois Arbour (303) 838-4487.

A BIG THANK YOU to all who rode and helped out, we couldn't have done it without you. – *Thom Harris*

## REGION 3 NEWS

Just a few new items to pass on from the most recent regional board meeting ...

**Dee Overholt** is retiring as Supply Chairman. The region needs someone to come forth and step into this position. The job pays \$25 per ride (plus materials expenses) and gives 250 worker points yearly.

**National secretary** Laurie Butterfield can be reached at a new phone number: (719) 481-8829.

**All ride sanctions** are due to national by January 31, 1995. The fee will be doubled (\$70) for sanctions coming in late.

**Region III** has again donated \$200 to the Colorado Horse Rescue (east and west sides).

**If you would like** to put on a clinic in your area, Judi Tobias has lots of expertise and materials to help you out. Contact her at (719) 593-7310.

## BARN SALE

**Cute enough to show**, calm enough for the trail, 1991 14.1h rose-grey half-Arab filly. Well-started under saddle, mother is Morgan-cross NATRC National Champion, sire is Crabbet Arabian. \$1,000. (719) 593-7310.

# Trail Markings

by Judi Tobias

*One of the most exciting results of the January board meeting of Region III's directors is that the board voted to make the attention to trails our number one goal for the coming year. One aspect of that goal is for me as the Trails Representative to write that, I hope, will be an informational column about trail for each issue of the Region III newsletter.*

Maybe you are wondering why we should be so concerned about trails – their development and upkeep. Trails are there and will continue to be there, right? Not necessarily. Many who live in the Colorado Springs area are in danger of losing one of their most used horse trails *right now* because the State Land Board wants to trade Section 16 for some land. That land is owned by a dentist who wants to develop the Section 16 land. He'll make a lot of money and we'll lose a vital trail. Why does this matter to you in Grand Junction or Taos or Laramie? Because it's happening all over the U.S. In Virginia, the local population had to fight the Disney Corporation to keep their land from being developed as a theme park! Can you imagine Disney World in your back

yard, or taking over your favorite open space?

So what can **you** do? We'd like every member of Region III to become a Trail Champion for the trail you ride every day. What's that? Well, we borrowed the idea from the Pikes Peak Area Trails Coalition. They describe a Trail Champion as "an individual who takes responsibility for working with ... the appropriate local government and organizations to 'champion' their trail. This could include garnering support for the trail, determining the priority for the trail, providing public support for the trail at public meetings, writing government officials about their trail, publicizing their trail, conducting talks on the trail and other assorted tasks designed to either get their trail built or keep it maintained."

Wow! That's a mouthful – but when you ride your horse on the trails, give some thought about what you can do to keep your trails in your neighborhood or where you hold your rides, open. And help Region III with the Colorado Trail Workday, Aug. 4-5. That's our regional commitment to trail maintenance – try it, you'll like it!

**The 1994 Benefit Ride/Navajo Lake ride and the San Juan Valley Trail Riders raised a whopping \$2,033.41. Hats off to all of you who worked so hard to make the ride such a success!**



## BOARD MINUTES

The following is an abbreviated version of the minutes from the Region III board meeting Nov. 5, 1994:

Roll call: Joyce Calhoun, Pat Jubb, Neal McKinstry, Sue McKelvy, Ike Mosgrove, Dee Overholt, Nancy Reinhardt, Lisa Sowell, Kathryn Utke, Karen Laden, Judi Tobias, Jill Talbot Hicks and Lois Arbour.

Treasurer's report presented/ approved. Ride book brought in \$135.00 with \$334.00 due. Suggestion to give discount to advertisers paying at the time of ad submission, \$500 advance to Sena for book expenses (remaining \$500 in Jan. 1995), \$200 thank-you to Sena for past work, book profit/expenses into Sue Bretag fund.

Linda Fisher has interest in hosting NATRC clinic at her Kenlyn Arabians in Aurora, Colo. Frank Roybal suggests Greenhorn Bartlett trail (SW of Pueblo) for a future competitive ride. Sue McKelvy, Kathryn Utke and Dee Overholt will look into it. Also Bud McGee (with Foxtrotter Assn.) would like to put on a B ride near

Colorado Springs.

Regional convention update information - has been passed on to membership.

Kathryn Utke wants Colorado Trail workday to remain on first weekend of August as there are no ride conflicts. Suggestion made to make an earlier wet-season trip on trail to identify problem areas not apparent in dry season. Golden Gate ride donations (\$200) will pay for trail signs to say "This 9 miles adopted and maintained by NATRC-Region III Horsemen." Maintenance supplies for trail will be purchased with remaining money. Trail repair chair will receive 75 worker points yearly and trail maintenance helpers will receive 50 points yearly, to be retroactive.

Ike Mosgrove reported 148 members in 1994, up from 144 in 1993. District breakdown: D1-9; D2-69; D3-29; D4-3; D5-25; and D6-12.

No fee changes for Region III in 1995.

Kathryn Utke donating \$50.00 to Pikes Peak Trails Coalition in Region III's name.

Rider mileage points deadline changed from Oct. 15 to Dec. 1 and Judy Miller is working with Pat Jubb on this.

For breed award eligibility, rider must present horse's paperwork ahead of time. Reminder that for Ken Burkdoll eligibility, Open horse and rider must be same for 6 rides.

Election results: At-large: Dan Fredal, Larry Keckler and Dee Overholt. District 3: Matt Baker; District 5: Kathryn Hayes. Sue Bretag; Lisa Sowell, Region III recognition: Sue McKelvy and Dee Overholt. 73 ballots were returned.

National board meeting held in Dallas, Tex. Ride sanctions expected to be returned earlier - by Jan. 15. Rides expected to take place in 1995 (with chairman's name following) are: Anasazi, ?; Rabbit Valley, Lovell Sasser; Navajo Lake, ?; Colorado Trail, Jeannie Boettcher; Cavalier, Judy Mason; Willow Springs, Dee Overholt; *Continued to page 5*

## NATIONAL BOARD UPDATE

The new sanction deadline is January 31, 1995. Any sanction applications for existing rides received after that date will be charged double the fee. New rides will be charged the standard fee regardless of when the application is sent.

Helmets will now be required of all Junior riders, nationwide. Through the Troxel helmet program, Region III has earned three free helmets, and Pat Jubb has donated one helmet for the use of any Junior riders that wish to compete, but do not own a helmet.

Beginning in 1996, the national board will be reduced in size from 18 to 12 members. Because of this reduction, the national board members will be responsible for much more than in the past and will have to be prepared to work even harder.

The heavyweight and lightweight issue has been voted on. The lightweight division will be 164 lbs. (without tack, and no minimum weight) and the heavyweight division will be 165 lbs. + (without tack). A competitor weighing in a 160 to 170 lb. "window" allows that person to declare which weight class they wish to compete in.

There has been a great deal of discussion and concern regarding this change. Some problems voiced have been heavyweight classes will not fill resulting in less point accumulation opportunities and larger lightweight classes making it more difficult to place (thus accumulate points). Also weighing without tack does not really make it equitable to the horse and/or the difference of stress between the two weight divisions. These concerns are going back to the national board again in February and will probably be voted on again. If you would like to voice your opinion please write to Laurie Butterfield, P.O. Box 338, Sedalia, Colo., 80135 before Feb. 15 so that she make take copies of the letters she receives to the national board meeting on Feb. 23.

The drenching issue was defeated by a wide margin.

The minimum age for Junior riders will remain at age 10.

NATRC is sending a representative to the AERC convention in Reno, Nev.

this month.

New ads will be placed in *Western Horseman* and *Trailblazer* magazines to draw a wider range of people to our sport.

Region 5 has proposed a rule change allowing horses to be corralled at trailers. This is a subject that will be touched upon more in the future. Their proposal has been carefully thought out and Joyce Calhoun has copies to anyone interested. Region III would like to know what you think.

A boundary realignment of Regions V and VI has been approved. Illinois, Wisconsin and the upper peninsula of Michigan are not a part of Region VI.

Your national board members are Joyce Calhoun, Jill Talbot Hicks and Judi Tobias. Please contact any one of us to voice your opinions, etc. WE WANT TO KNOW HOW YOU FEEL! We look forward to hearing from you.

**Joyce Calhoun**  
**761 W. El Portal, Pueblo West 81007**  
**(719) 547-3152**

## BOARD MINUTES

El Jinete, ?; Penrose, Jim Porter; Top of the World, Thom Harris; Golden Gate, Donna Schriefer; Chokecherry, ?; David B. Thomas, ?.

Jill Talbot Hicks pointed out that Region III had such good support for national convention in Denver last February, that it would be nice if we had good attendance in Las Vegas.

Discussion of worker release forms – agreed that some rides will probably not use ride steward procedure to have them signed (as done at Golden Gate), Joyce will go over details at National meeting.

Insurance companies are balking at horse events where helmets are not worn. Jill discovered that her homeowners policy covered her as ride manager when she increase her liability limit, all ride managers should look into this.

Nancy Reinhardt's tent investigation found one used tent for \$450 and \$1,600 for a new one without sidewalls. Sidewalls could be added at a later date, when more money became available. The SW area group is conducting a fund-raiser to buy a tent to keep in that area. Suggestion that front range area should do that as well, starting with a goal of \$1,500. Both fund-raisers may have to be supplemented with general fund money. Nancy will continue her tent research.

Conference calls made by absent board members must be set up 2 days in advance, paid for by that person(s). Advising board president of absence 2-3 days ahead of time would prevent being counted as absent with a maximum of two absent board members at a time. Only two conference calls allowed per term. Absent person should try to remain near a phone to accept collect calls in case of a needed callback, failure to do this counts as an absence. The conference calling rule only applies to meetings where phones are available. Bylaws would have to be changed, next meeting will have a vote on this issue.

For every 15 Troxel helmets sold, Region III receives a free one. We will receive 2 small sizes and 1 medium, with Pat Jubb donating a large one. They may be loaned to Junior at rides, since National may pass a helmet requirement for Junior riders.

Prices have been lowered to \$41.95.

Ike will continue to compile the information for the membership directory, and Joyce will produce it.

Jill Hicks attended a Colorado Arabian Horse Club meeting and said that they have a north and south division with their own membership in each. She noted how smoothly the meeting was run and suggested it might be more productive for Region III to consider eliminating its districts and establishing divisions also – to be discussed at the next general membership meeting. Jill will submit an article to newsletter and ask for comments before the meeting.

A letter from a concerned rider about use of rim pads will be passed on to national.

Laurie Butterfield attended the National Trails Conference in Alaska and had mentioned that emphasis was on trail users needing to work together and eliminate conflict. There was a general feeling that groups (like NATRC) need to have a grass-roots effort – starting with county commissioners.

The next Region III board meeting will be Jan. 7 (snow date Jan 14) at Pat Jubb's house in Colorado Springs, starting at 9:30 a.m. – *Nancy Reinhardt*

## Trainer Barb Jagoda earns California race award

For those of you who remember Region III rider and judge Barb Jagoda, Susie Witter would like to pass on some news about Barb and her Arabian racer Smoky. Barb campaigned many national champions in NATRC, and won many top honors also.

For the fourth straight year, the Jagoda-owned and trained Magna Terra Smoky has earned the California Horse of the Year award. In 1993, he won nine of 13 starts, finishing less than second place only once. He also picked up the Top Older Stallion/Gelding award. To this date, Smokey is now the highest-winning Arab racehorse in the U.S.

Some history: While attending an auction in Phoenix, and looking for an athletic gelding to use in competitive trail and endurance, Barb met Alice Pollock, owner of Cyroga, Smoky's dam. Alice later leased Cyroga and SW Dawid to Bryan Braithwaite, a breeding which produced Magna Terra Smoky.

Barb didn't become interested in horse racing until some years later when she and new husband Dick Evans began to think there must be a way to make money with the horse breeding operation

they were running. She called Jan Teutsch (who was promoting Arabian racing at Adams County in Denver) to offer a free hand in exchange for race-training experience. By the end of summer, she was hooked. She and Dick began conditioning some of their horses for racing, and went shopping for others.

Alice came back into the picture with an athletic two-year-old that was proving impossible to train. She was managing a cattle ranch all by herself, and didn't have time to work with Smoky. Reluctantly, Barb agreed to give it a try. After a rocky start, the colt began to trust her trainer and a friendship developed. He then began to show signs of stifle trouble, which eventually would require surgery. Alice asked if Barb would be interested in the horse and they ended up swapping training of two other horses owned by Alice for the purchase of Smoky. The surgery was successful, and race-training resumed for the horse. In another interesting twist, Smoky is blind in one eye from an infection a few years ago.

Congratulations to Barb Jagoda and Magna Terra Smoky for their outstanding accomplishments!

# Horse mileage accumulations thru 1994

*Note: Total tabulations of horse mileage only for horses that competed in the 1994 ride season.*

A Dandy Doll (Redle), 140; AH Roulette (Thompson), 140; AL Flyer (Feldman), 200; April Celebrity (Benjamin), 40; **Angel's Sunny** (J. Jones), 260; **Bar Alibi** (Roberts), 510; Beamer (Rinehart), 40; Bell's Eagle Star (Makris), 40; **Bey Buloo** (Groome), 340; Binzi (Powell), 210; Black Sammy (Jones), 160; BLM Nevada's Ruby (Mussetter), 220; **BLM Sherman** (Cook), 470; **Boxcar's Draffma** (Overholt), 420; **Brown R Dawud** (Mason), 1,080; Brown R Mr. Bit (LeSatz), 40; **Brown R Seayn** (Morris), 1,830; CA Spring Storm (Thompson), 60; Cisco (Keckler), 40; Cowboy Sonny Cash (Oberg), 20; CR Krystalette (Jubb), 2,930; Dare Devil Dusty (McKelvy), 80; Derozas Coretta K (Rose), 40; **Dom Domingo** (Fredal), 400; **Drummer's Red Warrior** (Pernicka), 370; Dutchess Royal Duke (Smith), 950; Eagle Mtn. Morninglory (DeBoer), 730; Eclipse (Woltman), 40; Ellusive Honor (Kercheval), 120; Fantazia Traponie (Pavlica), 150; Fascinating Rhythm (Miller), 100; **Fill My Shoes** (Reed), 360; Flicka's True Image (McCoy), 80; Flight (Dines, 90; Fortune's Rienzi (Fraser), 20; **Foxton Bon Bon Belle** (Malin), 510; **Foxton Bandido** (Eckel), 370; **Freckles Legs Cognac** (Uney), 470; Fyre Kracher (Hicks), 140; **Georgia**

**Moon** (Mussetter), 470; Golden Country Sunshine (Beumer), 140; Hahn's Diamond Rose (Keckler), 730; **HCC Valentine** (Rinehart), 500; Halcyon Hurricane (Bengfort), 370; High Justice Ash (Camrud), 60; Hoofin' It Merlin's Shadow (DeBoer), 480; Independence Dai (Fitzpatrick), 410; Indiana (Wisdom), 190; IPR Finesse (Scarlett), 80; Jet (Furey), 80; Jicarilla Moonshine (Claypool), 20; June's Lucky Mac (Smith), 910; Just A Thriller (Rubenstein), 180; Kai Callisto (McKelvy), 780; **Kim Rheannon** (Santistevan), 460; Lady's Bay Beauty (Ancell), 600; **Lady's Charlie B** (Ancell), 1,720; **Lady E's Fancy** (Bengfort/Ancell), 1,110; LL Rakib (Moe), 420; Magic's Honey Girl (Miller/Eggebraten), 120; Mandy (Jones), 150; **Mariah** (Boutte), 440; Miss Intrigoloe (Nepa), 60; Montoya Olympiad (Cumberworth), 1,880; **Mr. Jack** (Schrader), 280; Mt. Man Legacy (Eggebraten), 120; Mt. View Echo Star (Reinhardt), 300; My Boogie Shoes (Reed), 370; **Par Sundance** (Hayes), 2,370; **Par Torpedo** (Embree), 570; Prestigious (Sleder), 340; **Princess of Dance** (Dines), 280; Que A Who (Cumberworth), 60; **Quezara** (Cumberworth), 1,000; Raf's Rainbow (Schrader), 3,970; Raiken (Hollis), 20; Resort Valley

Riga (Eckel), 220; Rhea (Taylor), 20; Rock'n EZ Red (Ancell), 220; **Sackett** (Sasser), 1,140; Sadie (Hazel), 40; Samson (Werner), 60; San Barraff (Morris), 3,020; Saucedo's Numero Uno (Cummings), 1,040; Scharmoun (McKinstry), 880; **Schar Royal** (McKinstry), 690; Sea Apache Dancer (Kabel), 40; **Shadow Play** (Tobias), 2,110; Shal Shadow (Thomas), 120; Sheba (Kabel), 120; Shimmering Jewel (Clayton), 40; Silly (Keckler), 440; **Sir Love** (Baker), 1,520; Sir Sea Storm (Smith), 820; Skip Me Red (Rubenstein), 180; **Skipper's Snip B** (Jones), 270; Spanish Rosita (Beumer), 40; Sugar Foot's Sugar Shaker (McKelvy), 40; Sugar Jet's Pride (Woltman), 40; **Sundance Zeus** (Greenhaus), 660; Sunrise Tequila (LaRue), 60; Sun's Dakota Parader (Whiting), 980; Tai Knight Dancer (Fraser), 80; Taffy (Daves), 200; Tamaron LaCE (McCoy), 3,430; Tara Shameel (Wagner), 110; **Teddee** (Tobias), 360; **Tedolera** (Fredal), 260; Tempura (Uney), 80; That's Boss (Rinehart), 100; Tree Ann (Stanley), 20; Ultimate (Revis), 40; Win Tivaan (Mason), 1,470; Winged Osiris (Makris), 80; Zane's Okie Diamond (Ferris), 40.

1994 Horse Mileage Award Glasses: ● - 250 ♦ - 500 ▲ - 1,000 ■ - 1,500 ★ - 2,000

Next issue: *rider mileage accumulations*



*Working diligently* recording comments on the cards is first-time vet secretary Karen Laden (far left) while judge Dr. Nancy Loving looks on. At lower right is Golden Gate ride steward Ike Mosgrove soaking up the sunshine. (Photo Donna Schriefer.)

**Next issue:**

- Year-end awards
- Regional seminar news



**JET Arabian Ranch, Inc.**

*For Sale, Purebred Arabians  
for Show and Long-Distance Sports*

**Home of "Fyre Kracher" - Polish Stallion**

Jill Talbot Hicks  
Jeff Hicks

858 Marshall Road  
Boulder, CO 80303  
303/494-2531



## Deluxe English Cattle Bags

Price: \$55

Shipping/insurance \$5

## Collapsible Buckets

Price: \$13

Shipping/insurance \$3

## Pommel/Wither Bag

Bag only \$65

Bag/2 water bottles \$70

Bag/2 water bottles/snap on

heart monitor pocket \$80

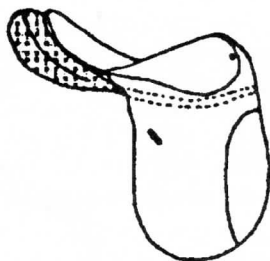
Shipping/insurance \$8

## Haunch Heater

Price: \$55, Shipping/insurance \$5

with removable Polar Plus lining \$105

Shipping/insurance \$8



Call or  
write  
for  
free  
catalog

## People Slicker (over 40 colors)

Slicker only \$105

Slicker/Hood \$120

Slicker/Hood/Stuff Sack \$110

Detachable Cape \$40

Shipping/insurance \$8

Aussie Style \$205

Shipping/insurance for Aussie \$10



## Troxel EQ Helmets

Available in black or white

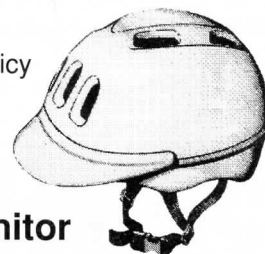
2-year limited warranty

Lifetime Impact Replacement Policy

Price: \$45 white; \$50 black

See-thru, wide visor \$10

Shipping/insurance \$5



## V-Max Basic Heart Monitor

\$195

Shipping/insurance \$5

Call for quote on purchase of more than one heart monitor.

**Note:** Teri Jurgens is available to take your orders now. Her address is 12980 N. Foothills Hwy. in Longmont, Colo. and she can be reached at (303) 823-0111.

## BITS AND PIECES

### Region III renewal/newsletter subscription

If you haven't renewed your Region III membership, the cutoff date for receiving the **Region 3 Newsletter** will be June 1 of the same year. National only members will receive two complementary newsletters unless they join Region III.

### Eligibility for Region III year-end awards

All national NATRC members who are dues-paying members to Region III NATRC are eligible for regional placings and awards. Requirements: Open horses and riders must enter three (3) rides per season and accumulate a minimum of 30 points to be eligible for year-end placings. Open horses/riders will be eligible for the Ruth Tyree High Average Horsemanship and Ken Burkdoll Combined High Average Horse/Rider awards if they enter a minimum of six (6) regional rides. All rides started (same rider and horse) will be counted. Competitive Pleasure horses and riders must enter two (2) rides per season and accumulate a minimum of 20 points to be eligible for year-end placings. Competitive Pleasure horses and riders will be eligible to compete for the High Average Combined Horse/Rider award but must enter a minimum of four (4) rides per season. The top horse in Competitive Pleasure shall be considered as a sweepstakes horse within the class and shall receive 2 additional points as done in the Open and Novice divisions. Novice horses and riders must enter two (2) rides per season and accumulate a minimum of 12 points to be eligible for year-end awards. Horses and riders receive 4 points for ride completion and a sweepstakes horse receives 2 points (18).

### Memo to ride managers

Ride managers are requested to send the ride results to national within two weeks after the ride. Region III rider fees should be sent at the same time to the point chairman.

### Verification of points and mileage

The point secretary keeps all Region III members' points and mileage each year. You must submit your own horse/rider mileage to the national mileage chairman for national NATRC records. Please verify points (after figuring your own, first) with the chairman by Dec. 1 of the current year, otherwise you must accept the points as calculated. Region III NATRC members who have not renewed their memberships by Mar. 1 of each year will have to pay an additional \$15 secretarial fee if they wish to have either their horse or rider points and mileage recorded. Contact Pat Jubb, 3455 Hartsock Lane, Colorado Springs, CO 80917, (719) 574-8522.

### Breed award eligibility

It is the responsibility of the rider to provide a copy of horse's registration papers with the ride entry to be eligible for breed awards at each ride. The papers will be returned to rider the day of the ride.

### Computerized membership mailing labels offered

Joyce Calhoun has the responsibility of the mailing labels various Region III activities. Her database can be categorized by districts, zip codes and includes people who have ridden in the past two years. They can be helpful to solicit participants for Region III NATRC events. Note to ride managers: Submit requests for rider lists with ample time for Joyce to prepare them, not at the last minute, please! The fee is \$5. Contact Joyce Calhoun at 761 W. El Portal, Pueblo West, CO 81007 (719) 547-3152.

### When paying for newsletter advertising or mailing labels . . .

When you use Joyce Calhoun's services for mailing labels, or if you are paying for an ad in the *Region 3 Newsletter*, please make your check out to NATRC/Region III.

### Ride critiques in Region III

Region III will benefit when you take the time to fill out and return the ride critique form included in the rider's packet, thank you.

# NATRC Membership Application

NATRC offers six membership plans (check plan desired):

- |  |  |
|--|--|
| <input type="checkbox"/> 1. FAMILY membership          | (\$35 per year) Household of one or two adults and children (one vote) |
| <input type="checkbox"/> 2. SENIOR membership          | (\$30 per year) Single adult member (one vote)                         |
| <input type="checkbox"/> 3. JUNIOR membership          | (\$20 per year) Single junior member under age 18 (no vote)            |
| <input type="checkbox"/> 4. ASSOCIATE membership       | (\$45 per year) Equine-related groups or businesses (no vote)          |
| <input type="checkbox"/> 5. SINGLE lifetime membership | (\$250) Any person of any age (one vote)                               |
| <input type="checkbox"/> 6. FAMILY lifetime membership | (\$350) Household of one or two adults and children (two votes)        |

**Membership is for twelve months from date of receipt**

All NATRC memberships include: rule book, membership cards, club patch, ride schedule, newsletters and eligibility to compete for NATRC annual high score awards and championships plus rider and horse mileage awards and reduced ride entry fees.

**PLEASE LIST ALL FAMILY MEMBERS**

Name(s) \_\_\_\_\_

Street \_\_\_\_\_ City, State, Zip \_\_\_\_\_

Phone (\_\_\_\_\_) \_\_\_\_\_ Birthdate of junior(s) \_\_\_\_\_ \$ enclosed \_\_\_\_\_

## NATRC Specialties\*

- |   |                           |
|---|---------------------------|
| <input type="checkbox"/> Lapel Pin  | \$3.00                    |
| <input type="checkbox"/> Patch (incl. w/ membership)  | \$1.75                    |
| <input type="checkbox"/> Poster   | \$1.00                    |
| <input type="checkbox"/> 10" Decal  | \$2.00                    |
| <input type="checkbox"/> 4" Decal   | 2 for \$1.50              |
| <input type="checkbox"/> Bumper Stickers  | \$1.50                    |
| 2 for \$2.75; 3 or more \$1.25 ea.  |                           |
| <input type="checkbox"/> Hat  | \$4.50 + \$2 P&H 1-5 hats |
| <input type="checkbox"/> Jacket   | \$30.00 + \$3 P&H         |
| Size <input type="checkbox"/> S34-36 <input type="checkbox"/> M38-40 <input type="checkbox"/> L42-44 <input type="checkbox"/> XL46-48 |                           |

## NATRC Manuals\*

- |  |        |
|--|--------|
| <input type="checkbox"/> Rule Book (incl. w/ membership) | \$2.00 |
| <input type="checkbox"/> Judge's Manual                  | \$5.00 |
| <input type="checkbox"/> Rider's Manual                  | \$4.00 |
| <input type="checkbox"/> Management Manual               | \$4.00 |
| (plus P&H 1-3 manuals)                                   |        |

## NATRC Videos\*

- |   |         |
|---|---------|
| <input type="checkbox"/> Vet Judge Video    | \$20.00 |
| <input type="checkbox"/> Horsemanship Video | \$20.00 |
| <input type="checkbox"/> Both videos        | \$35.00 |

## Contributions to NATRC are tax

**deductible.** If you wish to show your added support by contribution to our Foundation, Awards, Student Loan or General Funds, please increase the amount of your payment and direct how you wish it to be used.

- ☐ \$10 ☐ \$25 ☐ Other

How did you learn about NATRC?

\* All prices subject to change without notice, all manuals available to anyone regardless of membership

**Make checks payable to NATRC (U.S. funds only) and mail to**

**NATRC, P.O. Box 338, Sedalia, CO 80135-0338 Phone: (719) 481-8829**

**Colorado residents please add 3.5% sales tax for manuals and specialties.**

Former membership information

**1-95/REGION 3**

## REGION THREE NEWSLETTER

*North American Trail Ride Conference, Region III*

Iris Mosgrove

10590 Egerton Rd.

Colorado Springs, CO 80908

**ADDRESS CORRECTION REQUESTED**