

# Region 3

SEPTEMBER/OCTOBER • 1994

**R**ecently, I took a first-time rider to a competitive trail ride. One question she asked as we were driving to the ride was "What happens if we have hail or lightning – do they cancel the ride?" It was a valid question considering Colorado's normal spring weather. I told her that although the ride most likely wouldn't be cancelled, she should do whatever was safe for her and her horse. If that meant finding shelter until the storm was over and losing time, then I'd advise her to do that.

## A bit about Rider Responsibility

By Judi Tobias

judges? Let's look at a few possibilities. To start, we have a first-time rider. He is told at briefing he must follow the directions given by ride officials and judges. He reads the rule book and is intimidated by all the possible penalties and even

disqualification. He goes out on the trail and is told he is to go up a hill without stopping until he reaches the P&R. Halfway up the hill, his horse is gasping and its muscles are quivering. It tries to stop, knowing it can't do what it is being asked. But the rider was TOLD to go nonstop, so he disregards the warning signals of distress from the animal and goes on. Of course, the horse is the one who suffers.

---

*We need to be responsible for what happens to us during a ride.*

---

We as riders need to follow that line of thinking. We need to be responsible for what happens to us during a ride. How many times have you heard a rider say "That ride was timed too fast," or "The judge made us do this crazy, dangerous obstacle?" Ride managers and judges aren't infallible. They don't always make good decisions regarding trail, timing or obstacles. Most of the time rides are run by experienced riders, and in choosing trails they forget what it's like to be a scared novice on an insecure or poorly trained or unconditioned horse. The same is true of judges – in using obstacles to separate the really good horses and riders, they lose sight of the lack of proficiency of some of the horses or riders competing. What is a relatively simple obstacle to the judge may seem terrifying to a rider.

Now, what happens when the rider encounters these managers or

---

*Sometimes it happens that a rider comes to the competition on a horse that's not well-conditioned.*

---

Another scenario. A judge sets up an obstacle, maybe it's a log pull. The rider comes along and looks at it. He knows his horse panics at noises behind him, but he doesn't dare tell the judge he's afraid of the obstacle, so he takes hold of the rope and starts to pull the log. Sure enough, the horse spooks and spins, tangling his legs in the rope – and has a major accident.



Sometimes it happens that a rider comes to the competition on a horse that's not well-conditioned. The weather turns warm and there isn't a whole lot of water on the trail. The rider has bit off more  
*Continued on page 3*

# Region 3

The **Region Three Newsletter** is published bi-monthly and mailed to all current Region 3 members. It is available by subscription to non-Region 3 members for \$8 per year. Requests and payment for subscriptions should be sent to **Iris Mosgrove**, 10590 Egerton Road, Colorado Springs, CO 80908.

Your contributions of articles and other information are appreciated, but send them typed, PLEASE! **NATRC** and the **Region Three Newsletter** do not necessarily endorse or support opinions expressed in letters, articles or advertisements. The Region Three Newsletter welcomes letters to the editor. Please include your name, address and telephone number for verification. No unsigned letters will be published. Region Three reserves the right to edit or to refuse publishing a letter. Articles may be re-used provided attribution is given.

The **1994 deadline/distribution dates are:**  
**Jan./Feb. issue**-copy deadline Jan. 15, distribution Jan. 30; **Mar./Apr. issue**-copy deadline Mar. 15, distribution Mar. 30; **May/Jun. issue**-copy deadline May 15, distribution May 30; **Jul./Aug. issue**-copy deadline Jul. 15, distribution Jul. 30; **Sep./Oct. issue**-copy deadline Sep. 15, distribution Sep. 30; and **Nov./Dec. issue**-copy deadline Nov. 15, distribution Nov. 30.

**Display advertising rates:** **Full page** (7 1/2" x 9 7/8"), \$50; **half-page** (7 1/2" x 4 15/16"), \$30; **quarter-page** (3 3/4" x 4 15/16"), \$15; **eighth-page or business card** (2 1/2" x 3 1/4" or 3 3/4" x 2 7/16"), \$10. Ad rates are per issue and must be camera-ready (including photos). If you would like an ad designed and prepared for print, contact the editor for more information. Pre-printed **full-page flyers** ready for insertion are \$35 per issue and must be received 5 days in advance of distribution deadline.

**Barn Sale advertising rates:** Members: \$5 per ad, 5 lines maximum, additional lines are \$1 per line. Non-members: \$6 per ad, 5 lines maximum, additional lines are \$1 per line.

**Send all letters, ads, articles, photos, etc. to:** Lisa Sowell, 8150 West 111th Ave., Broomfield, CO 80021, (303) 465-3621.

## 1994 Region III Board of Directors

Susan McKelvy	President & At Large
Susie Witter	Vice Pres. & At Large
Nancy Reinhardt	Secretary & At Large
Janine Ancell	D-5
Lois Arbour	At Large
Karen Laden	At Large
Neal McKinstry	D-6
Ike Mosgrove	D-2
Dee Overholt	At large
Lisa Sowell	D-3
Kathryn Utke	Past President
Joyce Calhoun	Nat'l. board/R3 Treasurer
Dean Schrader	Nat'l. board
Jill Talbot Hicks	Nat'l. board

# McKelvy's Musings

By Susan McKelvy, Region III President

**T**he ride season is winding down to a close. It leaves me with a feeling of sadness and frustration over the rides that could not be entered or supported and the certainty of shorter rides that are dictated by colder weather. It is the prospect of long months of being limited to weekend rides for those of us forced to work to support our horse in hay and horseshoes. Still, it has been a great season despite the lack of moisture. We've seen the rising stars of new competitive riders in the adult and junior ranks and the continuing fine performance of longtime competitors. Friendships have been renewed and some new vistas enjoyed as we've ridden the flagged trails in Colorado and New Mexico.

Recently, I traveled by car across Wyoming and kept seeing locations there and in neighboring Utah and Idaho that would be great for competitive trail rides. Perhaps those of us who delight in a good horse, scenic and challenging trails and the camaraderie of people with similar preferences should make a private pact with ourselves to search out and seize opportunities to "talk up" the sport to horse people from locations outside Colorado and New Mexico to see if expansion into untapped areas might not result. Maybe we need to contact other trail riding groups and organizations that periodically stage rides to establish an umbrella organization (why not NATRC?) that could serve as a clearing house of ride and trail information. This is going to become a necessity as trails formerly open to horses become threatened and closed. Region III is fortunate to have Judi Tobias and Laurie Butterfield in our ranks. Judi is coordinating with Colorado State Trails Coalition and Laurie is NATRC's representative to a World Trails Symposium in Anchorage, Alaska in October. Since our region covers several states, we may need to consider asking for a volunteer to interact on state trail committees in New Mexico, Wyoming and Montana too. To do that, we need more members, which returns my thoughts to the outreach each of us can do as we meet people at rides, shows and conventions centering on horse-related activities.

Finally, my thanks to those of you who said "yes" when contacted about running as representatives from various districts for the Region III board. A great group of candidates! Look for the ballots in your mailbox soon.

***"Never telegraph to your horse how you feel, unless you want him to feel the same. No creature is more sensitive to mood than a horse. He will at once recognize fear or impatience on the part of the rider."***

— MacGregor Jenkins

## Remaining Rides and Clinics in 1994

Date	Ride/clinic	Location	Contact person
Oct. 1-2	Chokecherry	Farmington, NM	Bill Smith (505) 334-6275
Oct. 8	Penrose Clinic	Colo. Springs, CO	Nancy Reinhardt (719) 495-2605
Oct. 9	Penrose (B)*	Colo. Springs, CO	Jim Porter (719) 749-2313
Oct. 15	David Thomas (B)*	Farmington, NM	Terri Roberts (505) 334-2001

\* (B) = one-day ride

From page 1

## ***Become a responsible rider***

than he can chew. Moreover, he hasn't learned to recognize the symptoms of exhaustion in a horse. But he does know the time he's supposed to follow so he pushes the horse to finish on time – the horse becomes more and more tired. They finish, but the horse colics or develops thumps.

---

*We must remember that our first priority as horse people is to take care of the animal who is our teammate.*

---

Finally, there is the person who is an experienced open rider with a horse he is really campaigning. It's late in the season and he needs the points from this ride for his championship. The trail is rocky and the timing is fast. He misses a turn and gets lost and to compound things, his horse loses a shoe. But the rider goes on, makes up his time and finishes the ride. The horse is extremely lame and has damaged its hoof severely. This last example is the most upsetting of all. The first three situations were novices who honestly thought they had to do what management or judges told them and, quite possibly, were not aware of the consequences of their actions. The last rider put his ambition above his horse's welfare.

We must all remember that our first priority as horse people is to take care of the animal who is our teammate. If it means forfeiting the ride, so be it. There is always another ride. The horse doesn't sign the entry form and when we sign it, we are accepting the responsibility for both partners in the competition. If management or judges make an error or if circumstances create a dangerous situation, we cannot abdicate our right – indeed our duty – to protect our horse. There is no shame in saying "I'm not going to do this." In fact, many times it is the mark of the responsible horseman.

## **BARN SALE**

**FUTURE NATRC CHAMPIONS!** '92 half-Arabian dark grey gelding; excellent conformation w/ good bone; free-moving stride; bold yet mellow attitude. \$1,500.

**WSA Desert Wind:** '92 Purebred rose-grey gelding; type with substance; beautiful mover with all kinds of talent; pretty and correct for show ring, too. \$1,750.

Both colts have grown up on rugged sloped pasture and have had the best of veterinary and farrier care. They have been trained to load, clip and pony off another horse. Buy colts now and we will offer 45 days of free gentle breaking for trail when they are ready to be started. Negotiable prices (w/ terms) and deliveries to NATRC/pleasure trail homes. Sena Fitzpatrick (505) 783-4347.

**1981 WINNEBAGO** 22' motorhome, Chevy chassis w/454 engine, sleeps 5, generator, microwave, roof and chassis air. Has pulled 3 horses to many NATRC rides! Woody Kercheval, (303) 790-8402.

## **Willow Springs**

*Ride boasted more than 20 first-time riders*

**T**he Willow Springs "B" ride was held on July 9, in spectacular South Park, near Jefferson, Colo. The riders enjoyed new trails, great weather (no hail storm this year) and even more spectacular views than before.

The ride was fortunate in drawing over 20 first-time riders, many from clinics given in Colorado Springs and Conifer who were willing to give competitive trail riding a try. One of the first timers entertained competitors and judges alike by inventing new ways to check his horse in. He was grateful to learn there was an easier way. He also kept looking for a restaurant at lunch that had a big juicy hamburger that he was so hungry for – fortunately for him, others had lunch to share.

The Acts 19:11 group from Colorado Springs brought many of their juniors to the ride and also furnished several workers. Thanks a bunch to Acts 19:11!

### ***Cow-pie heaven***

Each ride has to have its unique "glitch" and Willow Springs was no exception. We shared the campsite with several hundred head of cattle. They managed to suck our water tanks dry Friday morning, not giving the spring enough time to recover before competitors arrived. Many, many thanks to the Jefferson-Como Volunteer fire dept. who came to our rescue by bringing their pumper in and refilling our tanks. The campsite was cow-pie heaven, but all managed to watch their footing closely.

Congratulations to Sweepstakes winners Judy Mason on Brown R Dawud for Open and Cara Cook on BLM Sherman, Novice.

We're looking forward to next year – hope to see you there! – *Dee Overholt*

**POA GELDING** for sale. This cute guy is 12.2h, very smooth mover, terrific attitude, not spooky; a great confidence-builder for a young rider. Good home only. Daughter graduating to mom's horse, mom got a new horse. Call Cindy at (303) 360-7605 for more information.



**JET Arabian Ranch, Inc.**

*For Sale, Purebred Arabians  
for Show and Long-Distance Sports*

**Home of "Fyre Kracher" - Polish Stallion**

Jill Talbot Hicks  
Jeff Hicks

858 Marshall Road  
Boulder, CO 80303  
303/494-2531

# REGIONAL BOARD HIGHLIGHTS

## Region III Board of Directors meeting August 28, 1994 in Dillon, Colo.

**Present:** Sue McKelvy, Kathryn Utke, Karen Laden, Lois Arbour, Lisa Sowell, Pat Jubb, Laurie Butterfield, Susie Witter, Ike Mosgrove, Dee Overholt, Jill Talbot Hicks and Dean Schrader.

Discussion about how well the Top of the World and Golden Gate ride entries are doing, especially in regard to the lack of August rides. It appears that later rides fill better after an extended break.

**Treasurer's Report:** Net Worth Report, 8/23/94, distributed. Correction on National Board Income/Expenses: \$2,139.77 and Rider Fees: \$374.00. Helmet prices has been reduced to \$41.95. Use of helmets was strongly endorsed by most board members present. Discussion followed of what to do with the bonus helmets received by the region from surplus sales. Suggestions: 1. Keep extra helmets for Juniors that don't

own one to use if/when helmet requirement goes into effect; 2. Keep some available for riders to try out; 3. If there are many extra helmets, offer an essay contest to Junior riders and award them. Motion/decision tabled until next meeting. Decision made to go ahead and send a donation to the Horse Rescue Program.

Treasurer has not received monies from the Navajo Lake Benefit Ride other than the Pernicka blanket raffle funds, ride management will be contacted. Financial details of Ride Book in reference to financial report are unclear, Sue will contact Joyce for more information.

Joyce's new membership list booklet samples examined and discussed. Ideas for improvements include: dating the booklet, possibly adding districts to listings and addition of the Publicity Committee. Printing and mailing costs will be investigated, impression of book was very favorable.

Sue will check with Joyce as to where the clinic donations monies have been entered into the Summary Report.

*(As he was taking his seat after a brief absence during the board meeting, Dean Schrader proudly stated to all of the women present that he remembered to "put the seat down" - which was met with cheers and applause!)*

Regional Seminar dates were considered. It was decided it would be best to be at least two weeks after the National Convention, motion/2nd/passed to set date for Feb. 11-12, 1995 in Farmington, New Mex. Bill and Jenny Smith will be contacted.

**Clinic Coordinator Report:** Report was published in July/August issue of Newsletter, thank you Judi Tobias.

**Colorado Trail Repair Day Coordinator:** Kathryn Utke reported that seven people completed major bog work on our section of the Colorado Trail. A thank you note to those people will appear in the Newsletter, and copies of that issue will be forwarded to those who would not normally receive it in the mail. Keeping the yearly repair date in August is suggested, especially in respect to better weather and lack of riding activities then.

**Judge's Coordinator:** Susie Witter reported that Region III has been successful recruiting new judges. Also, national has requested that ride critiques on apprentice/provisional judges be forwarded to them.

**Membership Coordinator:** Ike Mosgrove distributed an updated list and reported on various new members and eligibility with Region III with respect to national memberships. Region III currently has 144 members.

**Newsletter:** Lisa Sowell stated next deadline as

Sept. 15 and is disappointed in lack of contributions of ride articles, etc. from the membership.

**Publicity:** Karen Laden reported on current Region III literature. National will be using our format for some publications. Karen offered to help Bill and Jenny with publicity for the Regional Seminar, provided she gets plenty of advance time in which to work.

**Safety Rider Coordinator:** Lois Arbour stated that things are going fine and the two kits are complete. Discussion of reimbursement for supplies. Karen Laden thanked Lois and Susie Witter for help with Alyce Wich as a safety rider.

**Supplies:** Dee Overholt reported on new notebooks (some donated by Cavaliers Club) and condition of some rider vests which are showing some wear and will need replacement soon. We also have all-new slip-on halter tags. She is turning over her position as Supply Coordinator to anyone interested as time constraints are making it difficult to continue in this position. Any takers?

*Continued on page 5*

## Financial Summary As of 8/23/94

Cash and bank accounts	
Checking	\$ 7,519.09
Ken Burkdoll	765.97
Ruth Tyree savings	688.04
Sue Bretag savings	5,437.92
Total cash and bank accounts	\$ 14,411.02



## REGIONAL BOARD HIGHLIGHTS

**Rider Points/Mileage:** Pat Jubb requested that riders contacting her about points/mileage call only for verification/agreement on what they themselves have figured, and to do so by Oct. 15. It is not a requirement for riders to contact her, however. Note that worker points verification is handled by Joyce Calhoun.

**Regional BOD:** Discussion about lack of attendance. Sec. 4 and Sec. 15 (Standing Rules/Bylaws) state requirements of attendance at board meetings. Janine Ancell has missed three meetings this year. Motion/2nd/passed to make addition to Management Section/Standing Rules to state: President shall notify in writing that a Director missing two meetings shall be removed from the board after a third absence (referring to Sec. 15 in Bylaws). Nominations for regional directors discussed.

in that definition. No overwhelming conclusions were drawn from the second part of the drenching question. 4. Use of rim pads on horses – to stick with regulations already drawn up, and for judges to uphold those rules. The Championship Ride appears to be at least a couple years away from happening, National is attempting to set guidelines on issues at this time. A copy of the P&R procedures was brought out, some other regions apparently have some problems with the P&Rs. Trails Committee is attempting to put together a book of trail maps across the country, send yours to Joyce Calhoun if you would like to contribute. The IAHA Championship Ride will be in Ohio this year, Sept. 30-Oct. 1. National NATRC insurance policy covers property damage only (no liability) and is being reviewed. Participants in the sport are encouraged to check their homeowners policies (especially ride managements) for adequate coverage, at least until the national coverage is settled. A discussion followed of having everyone sign waivers (incl. workers, judges, etc), and make it a duty of the ride steward to ensure this is done.

**Ride schedule - 1995:** Sue would like to see a schedule as soon as possible, especially in respect to getting the sanctions posted.

**National Board nominations for next term (3-yrs.):** Judi Tobias and Kathryn Hayes nominated.

**Regional Board nominations (2-yr. terms):** Susie Witter and Sue McKelvy, Nominating Coordinators, have several excellent choices and will contact those parties to see if they will run.

**Service award nominations:** Names for Sue Bretag, Region III national recognition and Jim Menefee Lifetime Award (voted on by national board only) have been given and will be included with the other election information, to be mailed out by Susie.

**Next meeting date:** Nov. 5, 1994 at Sue McKelvy's home (starting at 9 a.m.), or Nov. 6, snow date.

*Submitted to Nancy Reinhardt from Lisa Sowell*

## Watch your mail!

Keep an eye on  
your mailbox  
because elections  
for the National  
and Region  
III Board of  
Directors –



and the NATRC service  
awards – are just around  
the corner. Exercise  
your privilege  
as a member  
and cast your  
vote!

**Region III Seminar:** Committees will be formed to assist Bill and Jenny Smith to help relieve their work load, unless they would prefer to select their own help.

**National Board Report:** Jill Talbot Hicks asked for input from regional board to take back to national regarding: 1. Weight limit change proposal (*refer to prior meeting minutes*) – most board members said they would rather see a decrease in the lower limit of weight (incl. tack) for Lightweight riders. 2. Lowering of age limit for Junior riders to age 8 (*again, refer to previous minutes*) – after much discussion of insurance problems, overestimating the abilities of one's kids (for a minimum 1-day ride), the question of maturity of the judgement of an 8-yr. old should the supervising adult need to pull from ride, most members were not in favor of such a change. 3. Drenching (*see prior minutes*) – discussion of simply changing the word to the definition “to not forcibly cause the horse to ingest” so the process of what drenching is would be universally understood; and then the legality of offering a horse sustenance from a container other than what is natural would also be included

**Send your articles, photos, ride  
write-ups, etc. by  
November 15, 1994**

to

Lisa Sowell  
8150 West 111th Ave.  
Broomfield, Colo. 80021

# OFFICIAL RIDE RESULTS

## Colorado Trail Ride - June 11-12, 1994

### Sweepstakes:

**Open:** Kathryn Hayes/Par Sundance

**Novice:** Derek Malim/Foxton Bon Bon Belle

### Open Heavyweight:

- 1/3 Lady E's Fancy/J. Bengfort
- 2/4 Dutchess' Royal Duke/J. Smith
- 3/2 CR Krystalette/P. Jubb
- 4/1 Hahn's Diamond Rose/L. Keckler
- 5/6 Boxcar's Draffma/D. Overholt
- 6/5 Raf's Rainbow/D. Schrader

### Open Lightweight:

- 1/1 Par Sundance/K. Hayes
- 2/3 Brown R Seayn/K. Morris
- 3/4 Bar Alibi/T. Roberts
- 4/2 Tamaron LaCE/P. McCoy
- 5/5 Brown R Dawud/J. Mason
- 6/5 Par Torpedo/P. Embree

### Open Junior:

- 1/2 Fantazia Traponie/M. Pavlica
- 2/1 Princess of Dance/M. Dines
- 3/3 Tempura/P. Uney

### Novice Heavyweight:

- 1/3 Tai Night Dancer/K. Fraser
- 2/6 Georgia Moon/G. Mussetter
- 3/1 Sadie/C. Wolfe
- 4/5 Shimmering Jewel/S. Clayton
- 5/2 Dom Domingo/D. Fredal
- 6/4 Mtn. Man Legacy/D. Eggebraten

### Novice Lightweight:

- 1/3 Taffy/G. Daves
- 2/1 Foxton Bandido/S. Eckel
- 3/ Magic Honey Girl/C. Eggebraten
- 4/2 Eagle Mtn. Morninglory/R. DeBoer
- 5/ Sea Apache Dancer/A. Kabel
- 6/5 Mr. Jack/D. Bilyeu

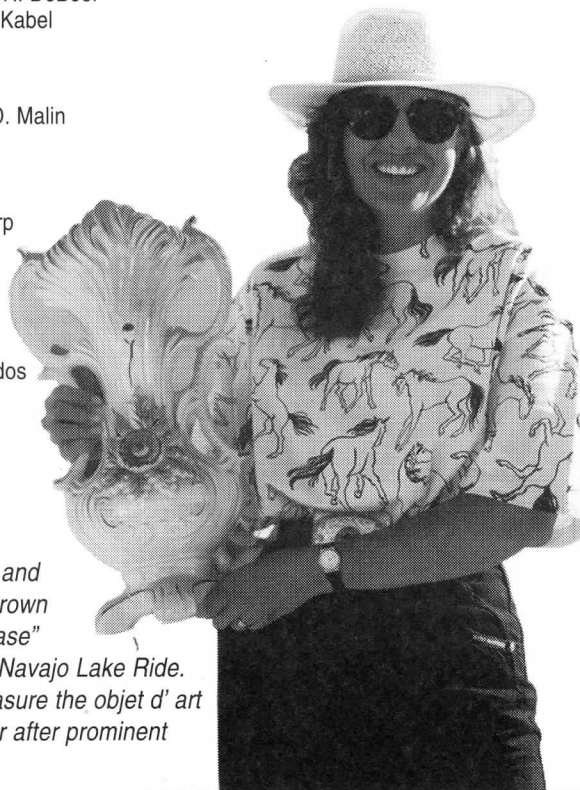
### Novice Junior:

- 1/1 Foxton Bon Bon Belle/D. Malin
- 2/6 Sheba/D. Kabel
- 3/2 BLM Sherman/C. Cook
- 4/3 RV Riga/B. Eckel
- 5/ Beau Rhapsody/JJ/ Sharp
- 6/4 Sugar/M. Zeigler

### Competitive Pleasure:

- 1/1 Fyre Kracher/J. Hicks
- 2/ Tedolera/C. Fredal
- 3/ Apache Wings/J. Sabados
- 4/2 Mariah/E. Boutte
- 5/ Indiana/M. Wisdom
- 6/4 Teddee/L. Tobias
- /6 Karen Moe

**Showing obvious pride and dubious pleasure, Amy Brown LeSatz shows off "The Vase" traveling trophy from the Navajo Lake Ride. Winners are urged to treasure the objet d'art and return it the next year after prominent display in their homes.**



## Cavalier XX - June 25-26, 1994

### Sweepstakes:

**Open:** Kathy Morris/Brown R Seayn

**Novice:** Derek Malim/Foxton Bon Bon Belle

### Open Heavyweight:

- 1/1 Dutchess' Royal Duke/J. Smith
- 2/2 CR Krystalette/P. Jubb
- 3/3 June's Lucky Mac/B. Smith

### Open Lightweight:

- 1/1 Brown R Seayn/K. Morris
- 2/2 Par Sundance/K. Hayes
- 3/4 Par Torpedo/P. Embree
- 4/3 Sackett/L. Sasser
- 5/5 Drummer's Red Warrior/D. Pernicka

### Open Junior:

- 1/2 Fantazia Traponie/M. Pavlica
- 2/1 Freckles Legs/P. Uney

### Novice Heavyweight:

- 1/2 HCC Valentine/R. Rinehart
- 2/ Dom Domingo/D. Fredal
- 3/1 Tai Night Dancer/K. Fraser
- 4/4 Georgia Moon/K. Douty
- 5/3 Adandy Doll/PI Redle
- 6/5 Beaver Sun/S. Nelson
- /6 Carolyn Abraham

### Novice Lightweight:

- 1/1 Foxton Bandido/S. Eckel
- 2/4 Mr. Jack/D. Bilyeu
- 3/3 Bell's Eagle Star/D. Makris
- 4/ Gae Mac/S. Wilson
- 5/2 Eagle Mtn. Morninglory/R. DeBoer
- 6/6 Flint Oak Sangria/V. Taft
- /5 Karen Falkenmeyer

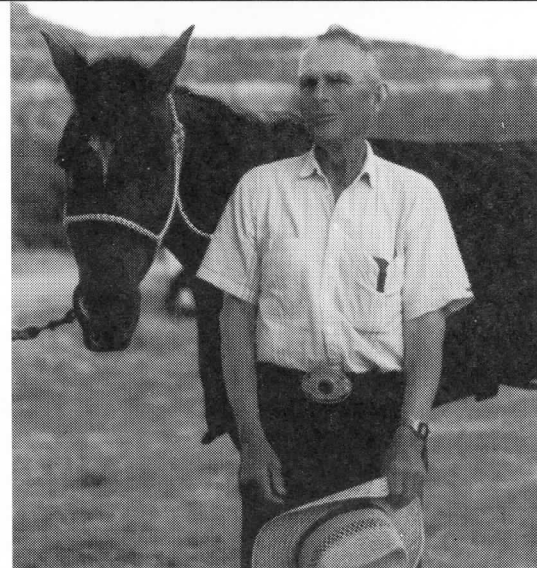
### Novice Junior:

- 1/1 Foxton Bon Bon Belle/D. Malin
- 2/2 BLM Sherman/C. Cook
- 3/3 RV Riga/B. Eckel
- 4/4 Miss Sara Priss/J. Meyers

### Competitive Pleasure:

- 1/ Just a Thriller/A. Rubenstein
- 2/2 Tamaron LaCe/P. McCoy
- 3/6 Shadow Play/J. Tobias
- 4/3 Silver Rose/J. Williams
- 5/ Sauced's Numero Uno/K. Cummings
- 6/ Fyre Kracher/J. Hicks
- /1 Edmond Boutte
- /4 Vicki Rinehart
- /5 George DeBoer

**RIDE MANAGERS!**  
*Don't forget to send your ride write-ups, photos, etc. by Nov. 15!*



**Happy 75th birthday to Neal McKinstry, shown after winning the Open Sweepstakes award at Navajo Lake on Shar Royal.**

(Photos - from Judi Tobias)

## Deluxe English Cattle Bags

Price: \$55

Shipping/insurance \$4

## Collapsible Buckets

Price: \$13

Shipping/insurance \$3

## Pommel/Wither Bag

Bag only \$65

Bag/2 water bottles \$70

Bag/2 water bottles/snap on  
heart monitor pocket \$80

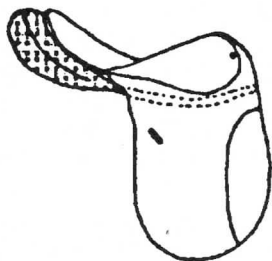
Shipping/insurance \$4

## Haunch Heater

Price: \$55

with removable Polar Plus lining \$105

Shipping/insurance \$5



## People Slicker

Slicker only \$105

Slicker/Hood \$120

Slicker/Hood/Stuff Sack \$110

Detachable Cape \$40

Shipping/insurance \$8

Aussie Style \$205

Shipping/insurance for Aussie \$10



## Troxel EQ Helmets

Lightest equestrian helmet available

Cool and comfortable - 7 air vents

Washable flo-thru mesh headliner

Comfortable quick release strap

Sizing pads for a custom fit

Removable visor

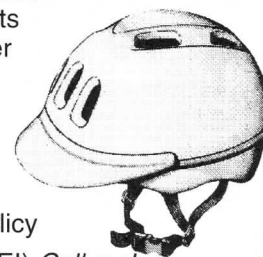
Available in black or white

2-year limited warranty

Lifetime Impact Replacement Policy

Price: \$55 each (4 or more -\$AVE!) *Call me!*

Shipping/insurance \$4



### Sizes:

EQ Small Head circumference of 19.5" - 21.5"

EQ Medium Head circumference of 20.5" - 22.5"

EQ Large Head circumference of 22" - 23.5"

**Write for free catalog**

**LOVELL**

Box 243, 647 "R" Road  
Mack, CO 81525-9724

(303) 858-7323

## BITS AND PIECES

### Region III renewal/newsletter subscription

If you haven't renewed your Region III membership, the cutoff date for receiving the **Region 3 Newsletter** will be June 1 of the same year. National only members will receive two complementary newsletters unless they join Region III.

### Eligibility for Region III year-end awards

All national NATRC members who are dues-paying members to Region III NATRC are eligible for regional placings and awards.

Requirements: Open horses and riders must enter three (3) rides per season and accumulate a minimum of 30 points to be eligible for year-end placings. Open horses and riders will be eligible for the Ruth Tyree High Average Horsemanship and Ken Burkdoll Combined High Average Horse/Rider awards if they enter a minimum of six (6) regional rides. All rides started will be counted.

Competitive Pleasure horses and riders must enter two (2) rides per season and accumulate a minimum of 20 points to be eligible for year-end placings. Competitive Pleasure horses and riders will be eligible to compete for the High Average Combined Horse/Rider award but must enter a minimum of four (4) rides per season. The top horse in Competitive Pleasure shall be considered as a sweepstakes horse within the class and shall receive 2 additional points as done in the Open and Novice divisions. Novice horses and riders must enter two (2) rides per season and accumulate a minimum of 12 points to be eligible for year-end awards. Horses and riders receive 4 points for ride completion and a sweepstakes horse receives 2 points (18).

### Memo to ride managers

Ride managers are requested to send the ride results to national within two weeks after the ride. Region III rider fees should be sent at the same time to the point chairman.

### Verification of points and mileage

The point secretary keeps all Region III members' points and mileage each year. You can verify points (after figuring your own, first) with the chairman by Oct. 15 of the current year, otherwise you must accept the points as calculated. Region III NATRC members who have not renewed their memberships by Mar. 1 of each year will have to pay an additional \$15 secretarial fee if they wish to have either their horse or rider points and mileage recorded. Contact Pat Jubb, 3455 Hartsock Lane, Colorado Springs, CO 80917, (719) 574-8522.

### Breed award eligibility

To be eligible for breed awards at each ride, a copy of your horse's registration papers must be included with the ride entry. The copy will be returned to you the day of the ride.

### Computerized membership mailing labels offered

Joyce Calhoun has computerized the membership for Region III, and has the responsibility of the mailing labels various Region III activities. Her database can be categorized by districts, zip codes and includes people who have ridden in the past two years. They can be helpful to solicit participants for Region III NATRC events. Note to ride managers: Submit requests for rider lists with ample time for Joyce to prepare them, not at the last minute, please! The fee is \$5. Contact Joyce Calhoun at 761 W. El Portal, Pueblo West, CO 81007 (719) 547-3152.

### When paying for newsletter advertising or mailing labels . . .

When you use Joyce Calhoun's services for mailing labels, or if you are paying for an ad in the *Region 3 Newsletter*, please make your check out to NATRC/Region III.

### Ride critiques in Region III

Region III will benefit when you take the time to fill out and return the ride critique form included in the rider's packet, thank you.

# NATRC Membership Application

NATRC offers six membership plans (check membership plan desired):

- |  |  |
|--|--|
| <input type="checkbox"/> 1. FAMILY membership          | (\$35 per year) Household of one or two adults and children (one vote) |
| <input type="checkbox"/> 2. SENIOR membership          | (\$30 per year) Single adult member (one vote)                         |
| <input type="checkbox"/> 3. JUNIOR membership          | (\$20 per year) Single junior member under age 18 (no vote)            |
| <input type="checkbox"/> 4. ASSOCIATE membership       | (\$45 per year) Equine-related groups or businesses (no vote)          |
| <input type="checkbox"/> 5. SINGLE lifetime membership | (\$250) Any person of any age (one vote)                               |
| <input type="checkbox"/> 6. FAMILY lifetime membership | (\$350) Household of one or two adults and children (two votes)        |

Membership is for twelve months from date of receipt

All NATRC memberships include: rule book, membership cards, club patch, ride schedule, newsletters and eligibility to compete for NATRC annual high score awards and championships plus rider and horse mileage awards and reduced ride entry fees.

**PLEASE LIST ALL FAMILY MEMBERS**

Name(s) \_\_\_\_\_

Street \_\_\_\_\_ City, State, Zip \_\_\_\_\_

Phone (\_\_\_\_) \_\_\_\_\_ Birthdate of junior(s) \_\_\_\_\_ \$ enclosed \_\_\_\_\_

## NATRC Specialties\*

- |   |                           |
|---|---------------------------|
| <input type="checkbox"/> Lapel Pin  | \$3.00                    |
| <input type="checkbox"/> Patch (incl. w/ membership)  | \$1.75                    |
| <input type="checkbox"/> Poster   | \$1.00                    |
| <input type="checkbox"/> 10" Decal  | \$2.00                    |
| <input type="checkbox"/> 4" Decal   | 2 for \$1.50              |
| <input type="checkbox"/> Bumper Stickers  | \$1.50                    |
| 2 for \$2.75; 3 or more \$1.25 ea.  |                           |
| <input type="checkbox"/> Hat  | \$4.50 + \$2 P&H 1-5 hats |
| <input type="checkbox"/> Jacket   | \$30.00 + \$3 P&H         |
| Size <input type="checkbox"/> S34-36 <input type="checkbox"/> M38-40 <input type="checkbox"/> L42-44 <input type="checkbox"/> XL46-48 |                           |

## NATRC Manuals\*

- |  |        |
|--|--------|
| <input type="checkbox"/> Rule Book (incl. w/ membership) | \$2.00 |
| <input type="checkbox"/> Judge's Manual                  | \$5.00 |
| <input type="checkbox"/> Rider's Manual                  | \$4.00 |
| <input type="checkbox"/> Management Manual               | \$4.00 |
| (plus P&H 1-3 manuals)                                   |        |

## NATRC Videos\*

- |   |         |
|---|---------|
| <input type="checkbox"/> Vet Judge Video    | \$20.00 |
| <input type="checkbox"/> Horsemanship Video | \$20.00 |
| <input type="checkbox"/> Both videos        | \$35.00 |

## Contributions to NATRC are tax

**deductible.** If you wish to show your added support by contribution to our Foundation, Awards, Student Loan or General Funds, please increase the amount of your payment and direct how you wish it to be used.

☐ \$10 ☐ \$25 ☐ Other

How did you learn about NATRC?

\* All prices subject to change without notice, any item may be purchased without membership

**Make checks payable to NATRC (U.S. funds only) and mail to**

**NATRC, P.O. Box 338, Sedalia, CO 80135-0338 Phone: (303) 688-2292**

**Colorado residents please add 3.5% sales tax for manuals and specialties.**

Former membership information

**2-94/REG 3**

## REGION THREE NEWSLETTER

*North American Trail Ride Conference, Region III*

Iris Mosgrove  
10590 Egerton Rd.  
Colorado Springs, CO 80908

**ADDRESS CORRECTION REQUESTED**