

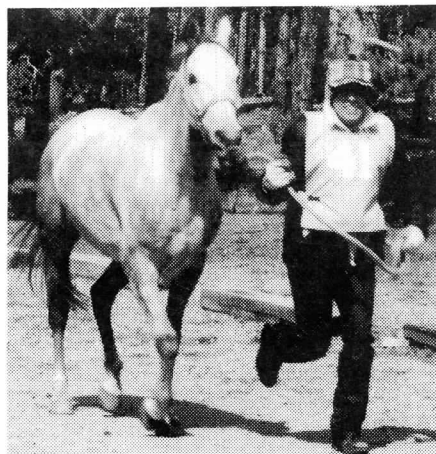
NOV • DEC • 1993 *Region 3*

Stout-hearted riders brave Golden Gate Benefit Ride

It was a dark and stormy night – yes, dear reader – the Golden Gate ride resembled nothing so much as the plot of a Gothic novel. As night fell over the campground in the mountains west of Denver, a blinding fog enveloped the area. Then, during briefing, thunder crashed and a freezing rain started to fall. You could almost hear demonic laughter and the dissonant chords of an organ playing. Riders whispered among themselves. It was enough to strike fear into the hearts of even the most experienced open riders. When they heard that six inches of snow could fall by Saturday night, more than one rider abandoned the idea of riding in

favor of a weekend at home by the fireside.

On Saturday morning, it was still cold and foggy. As the riders headed out, the eerie sound of elk bugling echoed through the misty valleys. At lunch the mist lifted slightly, encouraging the riders to hope for better weather ahead. But it was not to be. As the riders ascended the slopes of a

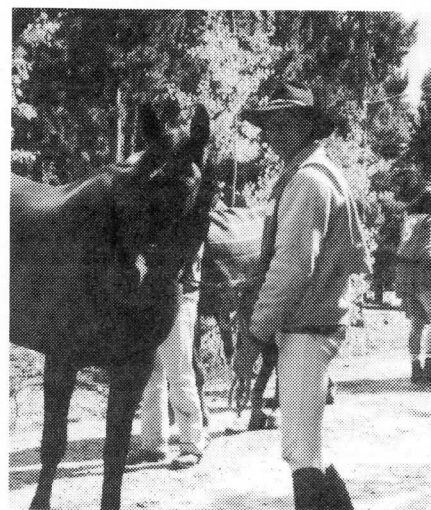


Larry Tobias and Teddee trot for the judges at check-out.



Ride Chairperson Rick McManaman takes a minute to relax during the Golden Gate Region III Benefit Ride.

mountain, they were deluged with rain and hail and terrorized by lightning bolts. Only the stout hearted continued on. They were fortified by encouragement from the judges, Patsy Conner and Nancy Loving, who shared the miserable weather.

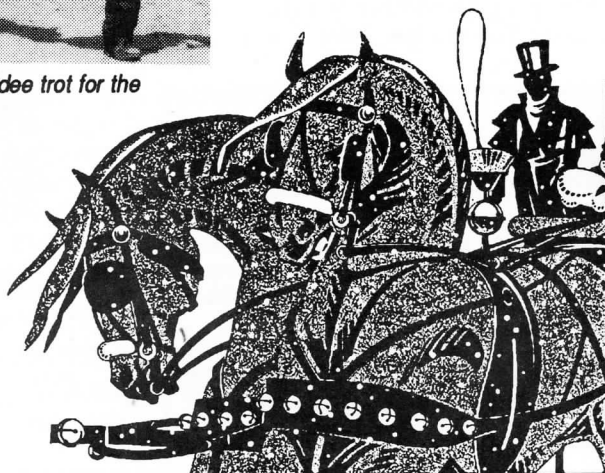


Novice Junior division winner Brent Eriksen and his Thoroughbred-cross gelding **Peter** wait to check out.

On Sunday morning, thirty-eight of the original fifty-three entrants went through the timers. They had been restored by Jenny Smith's delicious food on Saturday night. Then, in true literary fashion, they were rewarded. A weak sun peeked through and the clouds dissipated. Arriving back in camp, they were rewarded by a sumptuous buffet and lots of wonderful awards – a happy ending!

– *Judi Tobias*

**Happy
Holidays!**



**Updated convention
news on
page 3**

Region 3

The **Region Three Newsletter** is published bi-monthly and mailed to all current Region 3 members. It is available by subscription to non-Region 3 members for \$8 per year. Requests and payment for subscriptions should be sent to **Iris Mosgrove**, 10590 Egerton Road, Colorado Springs, CO 80908.

Your contributions of articles and other information are appreciated, but send them typed, PLEASE! **NATRC** and the **Region Three Newsletter** do not necessarily endorse or support opinions expressed in letters, articles or advertisements. The Region Three Newsletter welcomes letters to the editor. Please include your name, address and telephone number for verification. No unsigned letters will be published. Region Three reserves the right to edit or to refuse publishing a letter. Articles may be re-used provided attribution is given.

The 1993 deadline/distribution dates are: **Jan./Feb. issue**-copy deadline Jan. 15, distribution Jan. 30; **Mar./Apr. issue**-copy deadline Mar. 15, distribution Mar. 30; **May/Jun. issue**-copy deadline May 15, distribution May 30; **Jul./Aug. issue**-copy deadline Jul. 15, distribution Jul. 30; **Sep./Oct. issue**-copy deadline Sep. 15, distribution Sep. 30; and **Nov./Dec. issue**-copy deadline Nov. 15, distribution Nov. 30.

Display advertising rates: Full page (7 1/2" x 9 7/8"), \$50; half-page (7 1/2" x 4 15/16"), \$30; quarter-page (3 3/4" x 4 15/16"), \$15; eighth-page or business card (2 1/2" x 3 1/4" or 3 3/4" x 2 7/16"), \$10. Ad rates are per issue and must be camera-ready (including photos). If you would like an ad designed and prepared for print, contact the editor for more information. Pre-printed full-page flyers ready for insertion are \$35 per issue and must be received 5 days in advance of distribution deadline.

Barn Sale advertising rates: Members: \$5 per ad, 5 lines maximum, additional lines are \$1 per line. Non-members: \$6 per ad, 5 lines maximum, additional lines are \$1 per line.

Send all letters, ads, articles, photos, etc. to: Lisa Sowell, 8150 West 111th Ave., Broomfield, CO 80021, (303) 465-3621.

1993 Region III Board of Directors

Kathryn Utke	President & D-2
Susie Witter	Vice Pres. & At Large
Susan McKelvy	Secretary & At Large
Janine Ancell	D-5
Judy Cumberworth	At Large
Karen Laden	At Large
Neal McKinstry	D-6
Mary Lou McManaman	D-3
Dee Overholt	At large
Jill Talbot	At large
Laurie Butterfield	Nat'l. board
Joyce Calhoun	Nat'l. board/R3 Treasurer
Dean Schrader	Nat'l. board

President's Message

By Kathryn Utke, Region 3 President

As we begin to wrap up 1993 and before we go into 1994, I would like to thank all those people who helped make '93 a successful ride season!

First and foremost are those who spent their time and talent serving on the board of directors. It is people like you who work so that we all may continue to enjoy this sport!

We also had a financially successful year with two benefit rides. Thanks to Rick McManaman and his crew for putting on the Golden Gate Benefit Ride. Thanks also to Judi Tobias and Joyce Calhoun for the Singing Hills Benefit Ride. I also want to recognize the judges of these rides for their donations. Together, those rides raised more than \$3,000 for the region. I would like to formally invite the southern area of our region to host the 1994 benefit ride. We haven't been to one in that area yet.

Thanks to all who were involved in putting on rides and to all those volunteers during those rides this year. Our appreciation to horsemanship judge Kathy Morris and veterinary judge Dr. Joe Quintana for pitching in at the last minute and filling in at various rides.

Hope everyone mailed in their ballots for the 1994 Region III board of directors election.

May you all have joyful holidays! Hope to see each and every one of you at the NATRC National Convention on February 18-19 in Denver and at our region's awards breakfast Sunday morning, February 20.

Happy snow-covered trails!

REGIONAL BOARD MINUTES

The following is an abbreviated version of the minutes from the Region III Board of Directors meeting, Nov. 1993:

Minutes approved after consideration of possible misinterpretation of the last meeting's discussion about trail etiquette. A letter from Neal McKinstry was read about open riders receiving a bad rap and questioned the fairness of how problem was stated in the minutes.

Kathryn Utke nominated Lisa Sowell to serve remaining year of Mary Lou McManaman's term.

Joyce Calhoun provided financial reports. Note that there were two fund-raising rides earning \$3,067.20. Thanks to all BOD members and Region III riders who participated. Discussion followed centered on BOD's feeling that a benefit ride should take place on the western slope. Joyce

voiced concerns about lack of support in either donations or workers at the two benefit rides this year. Research of last January's board minutes revealed a statement by J. Cumberworth that the San Juan Riders and the SW Colo. NW New Mexico contingent would consider 10% of profits realized from their rides this past summer as a Region III donation. Region III's books have to be audited and Ike Mosgrove will meet with Joyce to accomplish this task.

Congratulations to our own Laurie Butterfield who was selected as the NATRC national board to replace Gloria Becker who is retiring as the National NATRC Secretary. The official move takes place in March 1994. Patsy Tomb Conner and Jill Talbot Hicks are running to replace Laurie's vacated position.

Continued on page 8



JET Arabian Ranch, Inc.

For Sale, Purebred Arabians
for Show and Long-Distance Sports

Home of "Fyre Kracher" - Poltsb Stallion

Jill Talbot
Jeff Hicks

858 Marshall Road
Boulder, CO 80303
303/494-2531



Next deadline is Jan. 15!
Send your stories and pictures
for the Newsletter to Lisa
Sowell, 8150 W. 111th Ave.,
Broomfield, CO 80021

Colorado Gold Rush – The 1994 NATRC National Convention

Dates: February 17, NATRC National Board Meeting
February 18-19, NATRC National Convention
February 20, Region III Awards Breakfast



Convention Schedule:

Thursday, February 17

Early registration in the hospitality suite.

Friday, February 18

8 a.m. Registration

9 a.m. Welcome

9:15 a.m. Allene Mourne on *Bits and Biting*

An avid bit collector with more than 300 bits, Mourne's presentation will cover the conformation of a horse's mouth, points of control, the lessons of leverage and the purpose behind different bit designs.

10:30 a.m. Break for Vendor Shopping

10:45 a.m. Panel of Winning Riders discuss *Prepare for Success: 101 Creative Positions in Horsemanship*

This will be a time to uncover secrets, get answers to those puzzling horsemanship questions and learn how these riders succeed.

Noon Lunch with Cowboy Poet Fred Ellis

1:30 p.m. Dr. Terry Swanson on *The Competitive Trail Horse: Form to Function*

Dr. Swanson, of the noted Littleton Large Animal Clinic, will give riders a greater appreciation and understanding of what it takes for a horse to be a successful NATRC campaigner.

3 p.m. Free Time

5 p.m. to 11 p.m. Central City Bus Trip

You'll get game credits and \$10 in gaming tokens (redeemable for cash) for an evening of fun at the legendary Glory Hole Saloon and Gaming Hall. There's also great food and shopping in this historic mining town. Just FYI: minors are allowed into the casinos but cannot gamble.



Saturday, February 19

7 a.m. Closed judge's seminar

8 a.m. Registration

9 a.m. Dr. James Heird on *The Instinctive Behavior of Horses*
Heird, of Colorado State University Equine Sciences and Veterinary Medicine School, will help riders understand the why behind equine actions.

10:30 a.m. Break for Vendor Shopping

10:45 a.m. Dr. James Heird on *How Horses Learn*

This session will help riders understand how to use the equine mind to their advantage.

Noon Lunch on Your Own

Choose among many restaurants to fit your taste – all within walking distance.

1:30 p.m. Roberta Kraus Vasko, Ph.D., on *Psychological Training for Peak Performance*

A sports psychologist with the respected Center for Creative Leadership, Dr. Vasko will teach the mental preparation skills needed to get the most out of your NATRC performance.

Adapted from a program for Olympic medalists, this high-energy program will get you in a winning frame of mind!

3 p.m. Free Time

6 p.m. Cocktails

7 p.m. NATRC Awards Banquet



Sunday, February 20

9 a.m. Region III Awards Breakfast

11:30 a.m. Final Good-byes

Costs:

Convention

Registration: \$20 for One Day – \$30 if received after Feb. 1

\$30 for Both Days – \$40 if received after Feb. 1

Central City \$20 (\$10 redeemable for cash, plus gaming credits)

Meals: \$3 Full Breakfast (Friday and Saturday mornings)

\$11 Friday Lunch

\$26 Prime Rib, Saturday Award's Dinner

\$21 Stuffed Chicken Breast, Saturday Awards Dinner

\$15 Region III Sunday Award's Breakfast Buffet

Hotel: \$55 per night, single or double

\$65 per night for three to four people per room

Sheraton Denver West

360 Union Blvd.

Lakewood, Colo. 80228

1-800-525-3966 or (303) 987-2000

(To be assured that you get a room, make your reservations before January 26)



Just FYI:

Your convention confirmation letter will include a map of the area if you are from out of town.

If you have door prizes to donate, want to be a convention vendor, or advertise in the convention program, contact Karen Laden at (719) 495-3892.

For more convention information, contact Joyce Calhoun at (719) 547-3152.

Registration form – page 10

Safety riders always found on the right trail

by Lois Arbour, Safety Rider Chairman

I have been wanting to write this for sometime to say "thanks" to everyone who helped me by working as safety riders during the year. I really did appreciate all of you.

There were no serious injuries to riders or horses this past season. We have had our share of injuries in the past. A

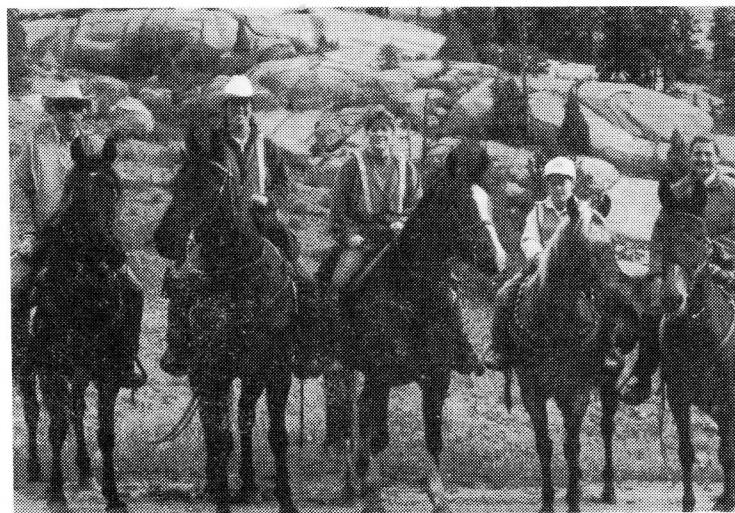
few riders found themselves off-trail, and the safety riders were there to help them get back on the right path.

I could make a list of all the wonderful volunteers, but I am afraid I might miss someone – but you know who you are – so again ... a BIG THANKS!!! I will be looking for all of you again in 1994, and

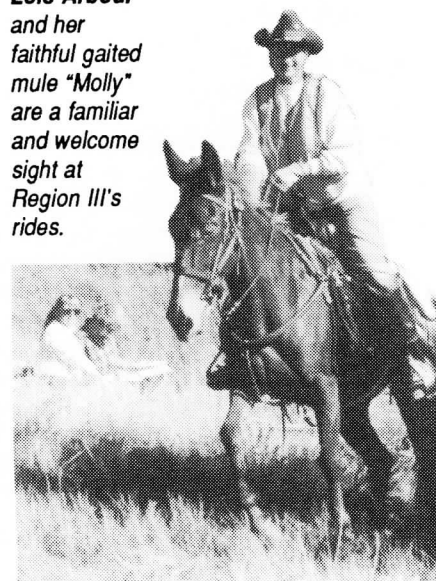
welcome anyone who would like to help. Although first-aid training is a big plus, it is not a requirement to participate as a safety rider, so please join us!

If you have any suggestions or questions, I would like to hear from you.

Lois Arbour
and her
faithful gaited
mule "Molly"
are a familiar
and welcome
sight at
Region III's
rides.



Top of the World - 1992: (from left): Gordon and Cheryle Hebenstreit, Stacy McKelvy, Bobbie Adams (Lois Arbour's grandson) and Lois Arbour.



One horsemanship judge's view: The Mount

When you have mounted for a judge, did you ever see on your card 'too far forward' or 'overbalanced from waist'? Here's a suggestion that might help ...

First, 'square up' your horse so that all four feet are at four equal corners. This enables your horse to more easily accept your weight without being thrown off balance or moving off.

Next, walk to the side of your horse and look directly over the saddle. Pick out something in the distance – a tree, a building, anything on which you can maintain focus as you mount.

Now go ahead and put the rein hand on the neck and the other hand on the other side of the pommel or on the cantle. Up you go! As you leave the ground, maintain your focus on the tree. Once you are up and straight, change your focus forward, looking

between your horse's ears or right above them.

Finally, lower yourself gently by quickly into the saddle – landing like a feather. As you make contact with the saddle, slip your foot into the other stirrup, straighten the saddle and you're ready to ride.

Keeping your body perpendicular to the ground maintains your balance. If your horse moves, you are more likely to stay with him. You are not overweighting your horse's forehand. Forward weight to a horse usually signals forward movement. An upright position also enables you to maintain constant contact with your horse and thus allows you to correct any impulse to move before it happens.

Think about it! – *Susie Witter*



"Your horse may grow springs at the judged mount!"

Reprinted from the Region III Youth Manual,
illustration by Cathy Bender

Colorado Gold Rush – Ten Reasons why YOU should attend the NATRC National Convention

(and bring your horsy friends):

10

Attend a *national* NATRC convention (when was the last time you did that?)!

9

Accept your awards, cheer for your friends as they get theirs!

8

Meet old and new friends!

7

The price is right!

6

Enjoy time away from _____ (you fill in the blank)!

5

Get revved up for the new ride season!

4

Give yourself a late Christmas present –
buy that slicker, cante bag, chili, or new
saddle you've always wanted!

3

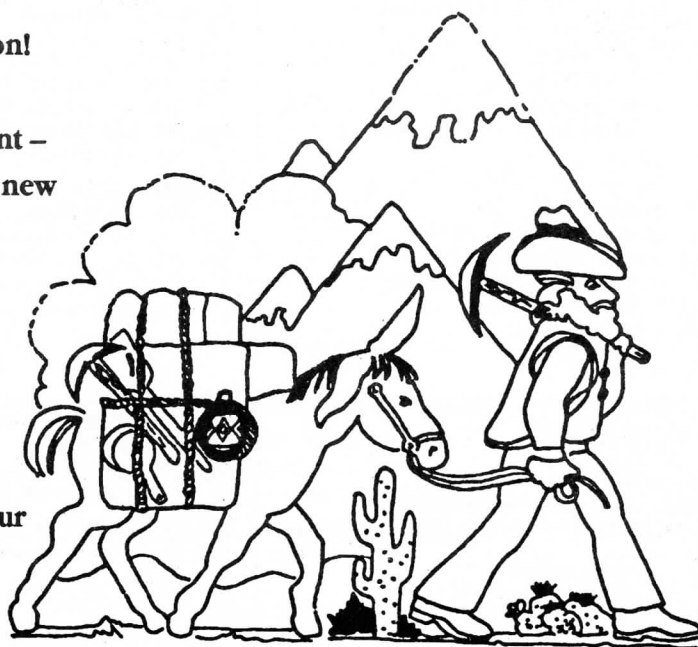
Eat, Eat, Eat!

2

Learn, Learn, Learn!

1

Spend time with people who talk your
language: horse!



Please note!

As of March 1, 1994, the National NATRC office will be moved to:

Laurie Butterfield
P.O. Box 338
Sedalia, Colorado 80135

OFFICIAL RIDE RESULTS

Singing Hills Benefit B Ride Aug. 22, 1993

Sweepstakes:

Novice - Peter/Brent Eriksen

Competitive Pleasure

- 1/3 CR Krystalette/P. Jubb
- 2/ Silver Rose/J. Williams
- 3/5 Teddee/L. Tobias
- 4/4 A Dandy Doll/C. Abshire
- 5/1 Fyre Kracher/J. Talbot Hicks
- 6/ Ellusive Honor/MS Kercheval
- /2 Kris Cummings
- /6 Nancy Rawcliffe

Novice Heavyweight

- 1/ Society Statusmaster/B Eriksen
- 2/6 Hoof'n It Merlin's Shadow/R. DeBoer
- 3/4 Corber Topside Katie/D. Kahler
- 4/ Shadow Charm/C. MacDonald
- 5/1 Maz/K. Delamont
- 6/5 Abigulu/P. Skoglund
- /2 Dan Fredal
- /3 K. Simpson

Novice Lightweight

- 1/ Nipper/L. Shirley
- 2/ Haydee/K. Kercheval
- 3/ San Barra/J. McRae
- 4/ Banjo/D. Pernicka
- 5/ Al Flyer/J. Feldman
- 6/1 Skip Me Red/A. Rubenstein
- /2 Susie Bail
- /3 Carol Fredal
- /4 Lisa Galbraith
- /5 Rhonda Jordan
- /6 Kim Ferrell

Novice Junior

- 1/ Peter/Brent Eriksen
- 2/5 Flashpoint/M. Dines
- 3/1 BLM Sherman/C. Cook
- 4/6 Magic Carpet Ride/A. Boller
- 5/ Smoke's Image/M. Izer/Eaton
- 6/4 Circus/J. Abshire
- /2 Lisa Spellman
- /3 Pepper Bryne

Chokecherry Canyon Oct. 2-3, 1993

Sweepstakes:

Open - Brown R Dawud/Judy Mason

Novice - Delights Hill Topper/Jan McMahon

Open Heavyweight

- 1/1 Schar Royal/N. McKinstry
- 2/2 Lady's Charlie B/S. Ancell
- 3/4 Cinder Bey/P. Rich
- 4/3 SA Boomer/L. Smith
- 5/5 Halcyon Hurricane/J. Bengfort

Open Lightweight

- 1/1 Brown R Dawud/J. Mason
- 2/5 Independence Dai/S. Fitzpatrick
- 3/ Prince Alla Ba Ha/E. Lovett
- 4/3 Scharmoun/L. Sasser
- 5/ Sam/L. Werner
- 6/ Sundance Zeus/L. Greenhaus
- /2 Shanna Reed
- /4 Audrey Taylor
- /6 Kathryn Hayes

Open Junior

- 1/1 Sir Sea Storm/B. Smith

Golden Gate Region III Benefit Sept. 18-19, 1993

Sweepstakes:

Open - Brown R Seayn/Kathy Morris

Novice - Tedolera/Carol Fredal

Open Lightweight

- 1/1 Brown R Seayn/K. Morris
- 2/4 Par Sundance/K. Hayes
- 3/3 Brown R Dawud/J. mason
- 4/6 Georgia Moon/K. Mussetter
- 5/2 Tameron LaCE/P. McCoy
- 6/5 Drummer's Red Warrior/D. Pernicka

Competitive Pleasure

- 1/ MLA Raj Bahabas/J. Adams
- 2/5 Boxcar's Draffma/D. Overholt
- 3/4 Teddee/L. Tobias
- 4/1 Sun Mtn. So Elegant/L. Sowell
- 5/3 Five Wings Aliza/L. Adams
- 6/2 Shadow Play/J. Tobias
- /6 Carol Brett/Beumer

Novice Heavyweight

- 1/4 Eclipse/T. Woltman
- 2/1 Max/K. Delamont
- 3/3 Dutchess's Royal Duke/B. Smith
- 4/5 Kim Rheammon/B. Santistevan
- 5/2 Hoof'n It Merlin's Shadow/R. DeBoer
- 6/6 Catchena/S. Ranegar

Novice Lightweight

- 1/5 Tedolera/C. Fredal
- 2/3 Sugar Jet's Pride/K. Woltman
- 3/2 Foxton Bon Bon Belle/S. Eckel
- 4/4 Sauvecito/A. Camarillo
- 5/6 Bell's Eagle Star/D. Makris
- 6/1 Skip Me Red/A. Rubenstein

Novice Junior

- 1/1 Peter/B. Eriksen
- 2/2 Phantom/D. Kabel
- 3/5 Banjo/L. Stockton
- 4/3 Flashpoint/M. Dines
- 5/4 Shublah/W. Meyers

- 2/2 June's Lucky Mac/S. Smith
- 3/3 Dsah Doha/L. Alsup
- 4/4 Lady E's Fancy/T. Ancell
- 5/6 Carissarmir FFA/Z. Brimhall
- 6/5 Shiba Sennar/K. Pousson

Competitive Pleasure

- 1/3 Pretty Boy Doha/ML Pousson
- 2/2 Mariah/E. Boutte
- 3/1 Binzi/J. Powell

Novice Heavyweight

- 1/2 Kim Rheannon/R. Santistevan
- 2/1 Dutchess' Royal Duke/B. Smith
- 3/3 Jet Punch/F. Hudson

Novice Lightweight

- 1/2 Delights Hill Topper/J. McMahon
- 2/1 Honey/M. Anderson
- 3/6 Taffy/G. Dawes
- 4/3 Prestigious/V. Sleder
- 5/ Woodland Sprite/J. Fanelli
- 6/5 Tedolera/C. Fredal
- /4 Sandra Claypool

Novice Junior

- 1/1 Roshani Sareei/E. Martin
- 2/2 Trucha Hita/A. Burkdoll

Top of the World Sept. 4-5, 1993

Sweepstakes:

Open - Brown R Dawud/Judy Mason

Novice - Foxton Bon Bon Belle/Sherry Eckel

Open Heavyweight

- 1/1 Lady's Charlie B/S. Ancell
- 2/6 Schar Royal/N. McKinstry
- 3/2 CR Krystalette/P. Jubb
- 4/ Raf's Rainbow/D. Schrader
- 5/3 Lady's Bay Beauty/J. Bengfort
- 6/4 Eagle Mtn. Morninglory/G. DeBoer
- /5 Cindy Wolfe

Open Lightweight

- 1/2 Brown R Dawud/J. Mason
- 2/3 Par Sundance/K. Hayes
- 3/4 Sackett/L. Sasser
- 4/6 CT Morenci/M. Olson
- 5/1 Tameron LaCE/P. McCoy
- 6/ MA Bowery Boy/W. Kercheval
- /5 Laura Groome

Open Junior

- 1/2 Lady E's Fancy/T. Ancell
- 2/1 Sir Sea Storm/B. Smith

Competitive Pleasure

- 1/4 Ellusive Honor/MS Kercheval
- 2/5 Nevada's Ruby/K. Mussetter
- 3/1 Boxcar's Draffma/D. Overholt
- 4/ Sunny/C. Beumer
- 5/ Spanish Rosita/R. Beumer
- 6/6 LL Rakib/K. Moe
- /2 Nancy Reinhardt
- /3 Larry Keckler

Novice Heavyweight

- 1/5 Dom Domingo/D. Fredal
- 2/3 Dutchess' Royal Duke/B. Smith
- 3/6 Halcyon Hurricane/T. Bengfort
- 4/ Magnum/J. Pratt
- 5/4 Max/K. Delamont
- 6/1 Silly/ME Keckler
- /2 Rennie DeBoer

Novice Lightweight

- 1/2 Foxton Bon Bon Belle/S. Eckel
- 2/1 Skip Me Red/A. Rubenstein
- 3/6 Rega/T. Scarlett
- 4/5 Bell's Eagle Star/D. Makris
- 5/3 Shadow/C. Fredal
- 6/4 Haydee/K. Kercheval

Novice Junior

- 1/3 Cognac Freckles Legs/P. Uney
- 2/1 Princess of Dance/M. Dines
- 3/2 Magic Carpet Ride/A. Boller

CORRECTION

Cara Cook was incorrectly identified in Singing Hills photo caption in the Sept./Oct. issue (pg. 6) as Myka Izer/Eaton. The Region 3 Newsletter apologizes for the error.
- Lisa S.

OFFICIAL RIDE RESULTS

David B. Thomas B Ride
Oct. 16, 1993

Sweepstakes:

Open - Tameron LaCE/Pat McCoy
Novice - Jet Punch/Fred Hudson

Open Heavyweight

1/1 Lady's Charlie B/E. Ancell
2/3 June's Lucky Mac/J. Smith
3/2 SA Boomer/L. Smith
4/4 Halcyon Hurricane/T. Bengfort
5/5 Beau Cerritos/T. Kedrowski

Open Lightweight

1/2 Tameron LaCE/P. McCoy
2/3 Sundance Zeus/L. Greenhaus
3/1 Par Sundance/K. Hayes
4/5 Bey Bullo/L. Groome
5/4 Blue Hills Nala Ash/S. Camrud

Open Junior

1/1 Lady E's Fancy/T. Ancell
2/2 Sir Sea Storm/B. Smith

Competitive Pleasure

1/1 Fill My Shoes/S. Reed
2/4 Daphne's Dilly/J. Quintana
3/6 Binzi/J. Powell
4/5 Mac/J. Thacker
5/3 Mariah/E. Boutte
6/2 Montoya Olympian/B. Cumberworth

Novice Heavyweight

1/2 Jet Punch/F. Hudson
2/3 Taffy/J. Guynn
3/5 Dutchess' Royal Duke/B. Smith
4/4 Kim Rheannon/R. Santistevan
5/1 HC Valentine/R. Rinehart

Novice Lightweight

1/1 Sunrise Tequila/S. LaRue
2/2 Jicarilla Moonshine/S. Claypool
3/5 Cherry Pie/S. McReland
4/3 Prestigious/V. Sleder
5/4 Woodland Sprite/J. Fanelli

Novice Junior

1/1 Trucha Hita/A. Burkdoll
2/2 Jet Threat/F. Hudson Jr.

BARN SALE

2 Orthoflex Competitor saddles, 15" seats, like new. \$1,200 ea. OBO (719) 749-2196

1/2 Arab mare, dun-colored, experienced rider only, 8 yrs. old. Asking \$1,000 OBO (719) 347-2157 after 7 p.m.

1/2 Arabian mare (7/8), 6 yrs. old, flashy, chestnut with flaxen mane and tail, excellent on trails and has worked cattle. Advanced-intermediate rider. \$2,500 Call Marty (303) 665-5281

Arab gelding, 7 yrs. old, gray. Lots of stamina and endurance. 15 hands. Reduced from \$3,500. Used Sharon Saare endurance saddle, like new. (505) 324-0472, NM



Deluxe English Cattle Bags

Price: \$55
Shipping/insurance \$4

Collapsible Buckets

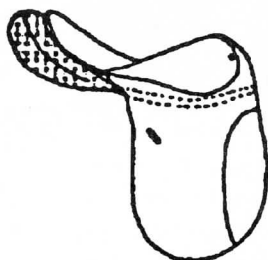
Price: \$13
Shipping/insurance \$3

Pommel/Wither Bag

Price: \$65
Shipping/insurance \$4

Haunch Heater

Price: \$55
with removable Polar Plus lining \$105
Shipping/insurance \$5



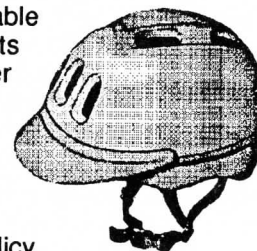
People Slicker

Slicker only \$95
Slicker/Hood \$105
Slicker/Hood/Stuff Sack \$110
Slicker/Hood/Stuff Sack/Leg Straps \$125
Detachable Cape \$25
Shipping/insurance \$5
Aussie Style \$195
Shipping/insurance for Aussie \$8



Troxel EQ Helmets

Lightest equestrian helmet available
Cool and comfortable - 7 air vents
Washable flo-thru mesh headliner
Comfortable quick release strap
Sizing pads for a custom fit
Removable visor
Available in black or white
2-year limited warranty
Lifetime Impact Replacement Policy
Price: \$55 each (4 or more -SAVE!) Call me!
Shipping/insurance \$4



Sizes:

EQ Small Head circumference of 19.5" - 21.5"
EQ Medium Head circumference of 20.5" - 22.5"
EQ Large Head circumference of 22" - 23.5"

Write for free catalog

OVELL
of mack

Box 243, 647 "R" Road
Mack, CO 81525-9724

(303) 858-7323

Willow Springs – Region 3's newest ride *Around the Region...*



Photo left: Horsemanship Judge Kathy Morris (right) and her secretary Donna Schrieffer catch up on the scorecards at Willow Springs. Meanwhile, rider Kathleen Mussetter (background) takes her lunch break.

Photo right: Competitive Pleasure rider Larry Keckler enjoys the lunch-time view of the Continental Divide while his horse Rosie munches on her lunch.



From page 2

REGIONAL BOARD MINUTES

Committee reports:

Membership; Ike Mosgrove reports that membership is slightly down from last year, and distributed an updated membership list. Newsletter; Lisa Sowell reported on problems she is considering other options for mailing. She presented a proposal from Candace Grant of Nederland, Colo., who writes horse horoscope columns, but a discussion of this indicated a negative response. Suggestion to send extra complimentary newsletters to prospective new members.

Colorado Trail Adoption; Kathryn Utke was encouraged by this year's response and said that it will continue next year.

Safety Riders and Clinic; Lois Arbour mentioned an article she sent for newsletter and will address the confusion over first-aid training for volunteers. BOD suggested Lois send a newsletter to all safety riders who participated this past year. Clinics, Jill Talbot Hicks will host a clinic in May in

Balance Sheet

11/15/93

Assets

Cash and bank accts.	
Checking	\$ 4,955.53
Ken Burkdoll	752.58
Ruth Tyree svgs.	676.01
Sue Bretag svgs.	<u>5,447.46</u>
Total cash/accts.	\$ 11,831.58

Total Assets \$ 11,831.58

Liabilities & Equity

Liabilities	\$ 0.00
Equity	<u>11,831.58</u>
Total Liabilities & Equity	\$ 11,831.58

Boulder, Colo., possibility that Cavalier will also host a clinic and ride. Lois will contact BOD member Janine Ancell about possible clinic on western slope with regard to

From Neal McKinstry – Horses Schar Royal and Scharmoun did well at the IAHA Regional and National Championship rides. "Moun" was Region VIII IAHA champion with Lovell Sasser riding and "Isom" went reserve champion. At the Championship ride, Isom made National Champion and Moun finished in the top ten. The following week had Neal and Isom back at Albuquerque, New Mex. to be re-presented with awards at the big national show there. Audrey Taylor and her horse Deylynn also received her 1/2 Arab National Champion award in Albuquerque.

It appears the Championship Challenge Ride for 1994 has been cancelled until further details can be worked out.

Ike Mosgrove reports that Region III had 144 dues-paying members in 1993, compared to 149 in 1992.

Congratulations to Frank and Stacy Bowman on the birth of their little girl. For those who would like to meet her, she will be making an appearance at the National Convention.

Cindy (McNamara) Grant is now Cindy (Grant) Jones. Best wishes to the happy couple!

Amy LeSatz reports that her dad Jim Brown (Churwater's Brown R horses . . .) is in good health.

meeting the 1994 Ride Book deadline.

Publicity and Public Relations; Karen Laden passed around some newspaper and magazine articles. She asks that if anyone sees some to forward them to her. Thanks to Karen for her efforts on Region III's publicity and for coordinating the take-home favors for all participants in the convention.

Youth Manual; Jill Talbot Hicks provided extra copies of the revised manual with a suggestion to sell them at clinics and the convention. It was noted that the information they contain is applicable to anyone competing in trail and not just juniors. BOD agreed to allow Nancy Loving, DVM, to use the Region III table to autograph her recently published book.

Supplies; Dee Overholt reported purchase of new judges notebooks. Vests are being repaired. Membership applications need to be included in all rider packets, and it was noted that ride evalua-

continued on page 9

Halloween zanies seen at David B. Thomas ride

The mid-October David B. Thomas ride was the grande finale of the Region III ride season. The cool fall weather, autumn colors, Saturday night pig roast and Halloween-garbed awards party made it an ideal way to wrap up the season. I think everyone who attended will agree – we stood united in our quest for fun!

The judges, Dr. Kit Schmidt from Colorado and Terry Yates from Arizona were great assets to the ride, in more ways than one. Their "rider friendly" professional way of judging was both admired and appreciated, but their physical appearance at the awards party was truly Awesome! When the blonde-haired Ms. Yates donned her green-haired Troll head



From left, Terri Roberts as the High Priestess, Kathe Hayes as the Mouth and Cathy Cumberworth.

From page 8

REGIONAL BOARD MINUTES

tions collected at end of ride rather than depending on riders to mail them back netted better results. Lois Arbour has agreed to take over responsibility of first aid supplies from Dee. Some problems with design of packs were discussed and Lois/Dee will contact Lovell Sasser for her advice and talent to come up with a better idea.

Nominating committee; Dean Schrader reports that 5 positions will have to be replaced as terms expire. Our thanks to those who have agreed to run in the 1994 election.

Judges; Susie Witter provided a list of judges used in Region III in 1993. BOD thanks those judges who agreed to help out rides caught in unfortunate circumstances.

Insurance; Dean Schrader stated that securing liability insurance to cover Region III rides would be cost prohibitive. Colorado Equine Liability covers adequately, but ride managements must be sure that a sign is posted for the duration of that ride.

Old business

National convention program updated and a budget is being prepared. Region III

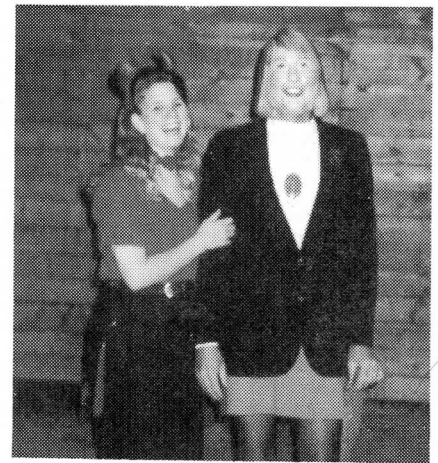
and paired up with the red-tongued, coverall-clad Lecher (Dr. Schmidt) for the awards presentation, it was an impressive sight. Both Ms. McCoy and Ms. Smith seemed especially taken with the Lecher upon receiving their awards.

The ride group as a whole were great sports and actively participated in the Halloween theme of the ride. Some of the collective ensemble consisted of an entire covey of Trolls, a Party pig, a Nymph, a bloody mechanic, a little Red Devil, a trash-sacked-bucket-headed redhead, a pink and white bunny, a Caveman/muscleman, a clown, skeleton, bear, "backward" government employee, NATRC trail marker, a large pink mouth, draculas and witches and, lastly, The High Priestess.

A crowd favorite wore a skirt with matching jacket, black nylon stockings, pendant and a Hillary Clinton head. "Hillary" brought the house down when – upon removal of her head – unveiled our very own Dr. Bill Cumberworth. Nice gams! Mrs. Dr. Judy C. was disappointed when she found that her 5-pound black and white ceramic Snoopy head was "too tight" to allow her to participate. The "Grand PooPah" was nothing less than distinguished in his crown of orange facial feathers. Good sports one and all!

Congratulations to the 1993 Land of

Enchantment Award winners Steve Ancell, Bill Smith and Dee Overholt. Thanks again to everyone who joined us in celebrating the Halloween spirit and to Mr. Henderson for his generous contributions – both in the form of awards for the ride and for all his time spent laboring over a hot stove. Thanks also to Mr. Lacko who filled our tummies with his generous donation of "porky" and especially to the workers for their help, without which there would not be a ride. See you in '94! – *Bengfort and Roberts, ride management*



The Little Red Devil (Cathy Cumberworth, left) and Hillary Clinton (Bill Cumberworth).

board members are reminded that door prizes are needed and to contact Kathryn Utke. Karen reports good vendor response and Laurie continues to check with hotel. Members planning to attend need to make reservations before Jan. 15.

Dee Overholt attended a meeting in Salida and learned that NATRC activities are not subject to the same moratorium the US Forest Service has put on outfitters and guides.

New national board officers are J.R. Kendall, President; David Whitehouse, Vice President; JoAnn Christianson, Treasurer; and Laurie Butterfield, Secretary. Regional representatives will be reduced from 3 to 2. The helmet ruling has been tabled until February and probably won't be applicable until 1995. Championship Challenge Ride has lost leadership of Sherry Murphy and gained Judy Jesse as her replacement. Problems with ride center of rider demands for points and mileage, length and speed of ride, etc.

Judy Miller summarized the rider critique forms and was disappointed in the small

number of responses. Most critical commentary came from novice and first-time riders. Rule books and junior ride manuals will be made available at each ride.

Correspondence was received involving the lost first aid kit at Turkey Track ride. Eventually, the kit was paid for, but not without a lot of involvement. Cost of kit: \$117.89

New Business

Because of the delay of the regional seminar, an exception to the By Laws and Standing Rules was made regarding the election of 1994 board members.

Ride Book 1994 – Sena Fitzpatrick usually needs information by Feb. 5. Need better spacing of rides during the summer months.

The usual Region III donation – in the amount of \$100 – was made to National for sponsorship of various year-end awards.

A BOD meeting has been called for Jan. 8, 1994, at Jill Talbot Hicks condo in Dillon. – *Respectfully submitted, Susan McKelvy, Secretary*

BITS AND PIECES

Region III renewal/newsletter subscription

If you haven't renewed your Region III membership, the cutoff date for receiving the **Region 3 Newsletter** will be June 1 of the same year. National members will only receive two complementary newsletters until they join Region III.

Eligibility for Region 3 year-end awards

All national NATRC members who are dues-paying members to Region III NATRC are eligible for regional placings and awards. Requirements: Open horses and riders must enter three (3) rides per season and accumulate a minimum of 30 points to be eligible for year-end placings. Open horses and riders will be eligible for the Ruth Tyree High Average Horsemanship and Ken Burkdoll Combined High Average Horse/Rider awards if they enter a minimum of six (6) regional rides. All rides started will be counted. Competitive Pleasure horses and riders must enter two (2) rides per season and accumulate a minimum of 20 points to be eligible for year-end placings. Competitive Pleasure horses and riders will be eligible to compete for the High Average Combined Horse/Rider award but must enter a minimum of four (4) rides per season. The top horse in Competitive Pleasure shall be considered as a sweepstakes horse within the class and shall receive 2 additional points as done in the Open and Novice divisions. Novice horses and riders must enter two (2) rides per season and accumulate a minimum of 12 points to be eligible for year-end awards. Horses and riders receive 4 points for ride completion and a sweepstakes horse receives 2 points (18).

Memo to ride managers

Rides are requested to send the results of a ride to national within two weeks after the ride. Region III rider fees should be sent at the same time to the point chairman.

Verification of points and mileage

The point secretary keeps all Region III members' points and mileage each year. You are welcome to verify your points with the chairman by Oct. 15 of the current year, otherwise you must accept the points as calculated by the point secretary. Region III NATRC members who have not renewed their memberships by Mar. 1 of each year will have to pay an additional \$15 secretarial fee if they wish to have either their horse or rider points and mileage recorded. Contact Pat Jubb, 3455 Hartsock Lane, Colorado Springs, CO 80917, (719) 574-8522.

Breed award eligibility

To be eligible for breed awards at each ride, you must send in a copy of your horse's registration papers with the ride entry. This copy will be returned to you the day of the ride.

Computerized membership mailing labels offered

Joyce Calhoun is in charge of computerization of membership for Region III. She takes care of the mailing labels for the *Region 3 Newsletter* and provides labels for ride chairs and clinic organizers. These lists offer much information and can be categorized by districts, zip codes and include people who have ridden in the past two years. They can be helpful to solicit participants for all Region III NATRC events. Note to ride managers: Submit requests for rider lists with ample time for Joyce to prepare them, not at last minute, please! The fee is \$5. Contact Joyce Calhoun at 761 W. El Portal, Pueblo West, CO 81007 (719) 547-3152.

When paying for newsletter advertising or mailing labels . . .

When you use Joyce Calhoun's services for mailing labels, or if you are paying for an ad in the *Region 3 Newsletter*, please make your check out to NATRC/Region III.

Ride critiques in Region III

Region III will benefit when you take the time to fill out and return the ride critique form included in the rider's packet, thank you.

Registration form

Clip and mail to Joyce Calhoun • 761 W. El Portal • Pueblo West CO 81007

Name(s) _____

Mailing address _____ City _____ State _____ Zip _____

Telephone (h) (____) _____ Telephone (w) (____) _____

Region III member? ☐ Yes ☐ No

Check the events you will attend (costs are per person):

\$ Amount

☐ The Convention

\$20 for one day (\$30 after Feb. 1)

Circle one: Friday Saturday

\$30 for two days (\$40 after Feb. 1)

☐ Friday Central City Trip - \$20 (\$10 redeemable for cash)

MEALS: ☐ Friday Lunch - \$11

☐ Saturday NATRC Awards Banquet

\$21 Stuffed Chicken Breast or

\$26 Prime Rib

☐ Sunday Region III Awards Breakfast Buffet - \$15

TOTAL:

MAKE CHECKS PAYABLE TO NATRC/REGION III

Keep winter's chill off your horse

Wintertime in Colorado means it's time to pay special attention to your horse. With plummeting temperatures, comes the need to change food and water rations, as well as to make provisions for shelter.

The following are guidelines for safe and healthy horse care during the cold months:

- With a comparatively small stomach, a horse needs to eat often. Twice-a-day feedings will improve disposition and efficiency in utilizing the food.

- A horse consumes about two percent of its body weight each day in feed. No more than one percent of this should be in

grain, with the balance being in good quality hay. If the grain mix does not contain salts and necessary minerals, these should be provided as a supplement.

- The amount of hay fed in winter may need to be increased, especially if your horse does not have shelter. The heat produced during digestion of roughage will help keep the animal warm.

- A horse drinks between 10 and 12 gallons of water per day, with more in hot weather. A horse may not drink enough in winter, especially if the water is very cold. If a water heater is used, keep the temperature between 30-40° F and

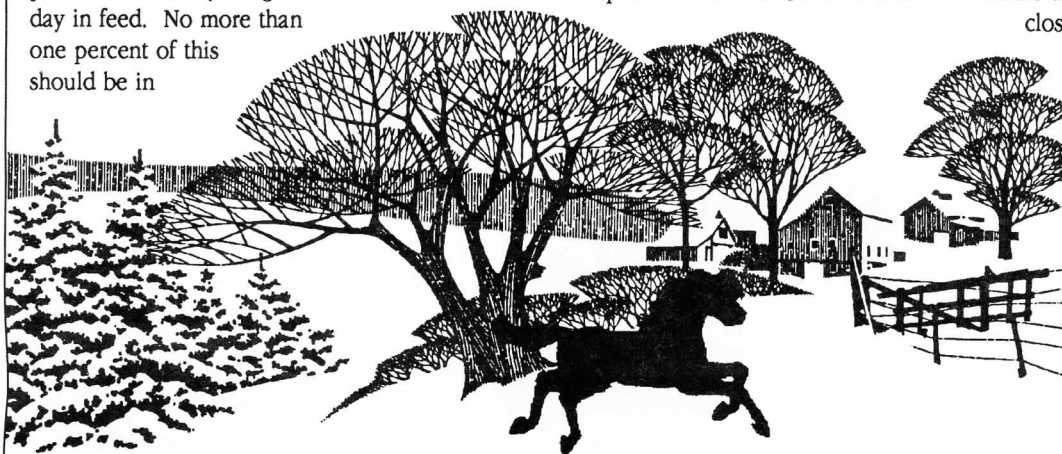
check daily for electrical shorts.

- Shelter for most horses need furnish only protection from the hot sun, wind or precipitation. A three-sided shed, open away from prevailing weather, in the corner of the pasture will work, although a complete stable with box stall is available to many horses.

If your horse is kept in an enclosed barn, proper ventilation is important. Respiratory troubles often develop when horses are left in tight barns that become too warm and humid. Fresh air is needed even in winter, but avoid drafts. Keep the stable temperature and atmosphere as close to that outside as possible.

Bedding should be dry and clean. Remove manure from stalls at least once a day, and be certain the stable is well-drained.

Regardless of the shelter, be alert for loose boards, nails or any projections that can cause injury. And, keep all wire and baling twine picked up to avoid a horse ingesting or tripping over it, or being cut or punctured.



Benefit rides boost Region 3 finances

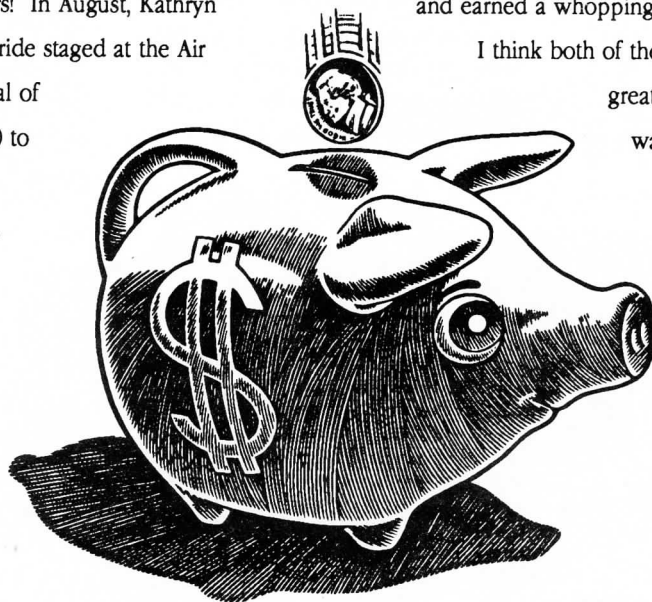
Region III's two benefit rides in the 1993 season earned a total of \$3,060.27 for our coffers! In August, Kathryn Utke chaired the Singing Hills B ride staged at the Air Force Academy and earned a total of \$1,368.02. Kathryn donated \$200 to the trail fund in the Sedalia area and gave \$1,368.02 to the region. Rick McManaman chaired the Golden Gate ride in

September, staged at Golden Gate State Park near Blackhawk and earned a whopping \$1,892.26!

I think both of these dedicated people should be give a great big hand for helping in such a large way to increase our region's financial standing.

Have a happy holiday season and see you in Denver.

— Joyce Calhoun



NATRC MEMBERSHIP APPLICATION

NATRC offers six membership plans (check membership plan desired):

- | | |
|--|--|
| <input type="checkbox"/> 1. FAMILY membership | (\$35 per year) A household of one or two adults and children (one vote) |
| <input type="checkbox"/> 2. SENIOR membership | (\$30 per year) Single adult member (one vote) |
| <input type="checkbox"/> 3. JUNIOR membership | (\$20 per year) Single junior member under age 18 (no vote) |
| <input type="checkbox"/> 4. ASSOCIATE membership | (\$45 per year) Equine groups or businesses (no vote) |
| <input type="checkbox"/> 5. SINGLE LIFETIME membership | (\$250) Any person of any age (one vote) |
| <input type="checkbox"/> 6. FAMILY LIFETIME membership | (\$350) Husband, wife and children (two votes) |

Membership is for twelve months from date of receipt

All new memberships Include:

Rule book, membership cards, club patch, ride schedule, newsletters and eligibility to compete for NATRC Annual High Score Awards and Championships plus rider and horse mileage awards, and reduced ride entry fees.

(Please list all family members)

Names

Address

City

State

Zip

Telephone

Birth Date(s) of Children

Amount Enclosed (\$)

NATRC SPECIALTIES*

- | | |
|------------------------------------|--------------------------------|
| <input type="checkbox"/> Lapel Pin | \$3.00 |
| <input type="checkbox"/> Patch | \$1.75 (incl w/new membership) |
| <input type="checkbox"/> Poster | \$1.00 |
| <input type="checkbox"/> 10" Decal | \$2.00 |
| <input type="checkbox"/> 4" Decal | 2 for \$1.50 |
| <input type="checkbox"/> Bumper | 1 for \$1.50 |
| <input type="checkbox"/> Stickers | 2 for \$2.75 |
| <input type="checkbox"/> | 3 or more \$1.25 each |
| <input type="checkbox"/> Hat | \$4.50 + \$2 p&h 1-5 hats |
| <input type="checkbox"/> Jacket | \$30.00 + \$3 p&h |

NATRC MANUALS*

- | | |
|---|------|
| <input type="checkbox"/> Rule Book | \$2 |
| (included w/membership) | |
| <input type="checkbox"/> Judges Manual | \$5 |
| <input type="checkbox"/> Riders Manual | \$4 |
| <input type="checkbox"/> Management Manual | \$4 |
| Plus \$1 P&H (1-3 manuals) | |
| <input type="checkbox"/> Vet Judge Video | \$20 |
| <input type="checkbox"/> Horsemanship Video | \$20 |
| <input type="checkbox"/> Both for | \$35 |

CONTRIBUTIONS TO NATRC ARE A TAX DEDUCTION.

If you wish to show your added support by contributing to our Foundation, Awards, Student Loan or General Funds, please increase the amount of your payment and direct how you wish it to be used.

☐ \$10 ☐ \$25 ☐ Other

How did you learn about NATRC?

Former membership information

*ALL PRICES SUBJECT TO CHANGE WITHOUT NOTICE

Any item may be purchased without membership

Make checks payable to NATRC (U.S. Funds only) and mail to: NATRC, P.O. Box 20315, El Cajon CA 92021
619/58TRAIL. California residents please add 8% sales tax for manuals and specialties.

1-93/REG 3

REGION THREE NEWSLETTER

North American Trail Ride Conference, Region III

Iris Mosgrove
10590 Egerton Rd.
Colorado Springs, CO 80908

BULK RATE
U.S. POSTAGE
PAID
Permit No. 97
Lafayette, CO

FORWARDING AND RETURN POSTAGE GUARANTEED
ADDRESS CORRECTION REQUESTED